



SZABO SCANDIC

Part of Europa Biosite

Produktinformation



Forschungsprodukte & Biochemikalien



Zellkultur & Verbrauchsmaterial



Diagnostik & molekulare Diagnostik



Laborgeräte & Service

Weitere Information auf den folgenden Seiten!
See the following pages for more information!



Lieferung & Zahlungsart

siehe unsere [Liefer- und Versandbedingungen](#)

Zuschläge

- Mindermengenzuschlag
- Trockeneiszuschlag
- Gefahrgutzuschlag
- Expressversand

SZABO-SCANDIC HandelsgmbH

Quellenstraße 110, A-1100 Wien

T. +43(0)1 489 3961-0

F. +43(0)1 489 3961-7

mail@szabo-scandic.com

www.szabo-scandic.com

[linkedin.com/company/szaboscandic](https://www.linkedin.com/company/szaboscandic) 



UK Office

Everest Biotech Ltd

Cherwell Innovation Centre
77 Heyford Park
Upper Heyford
Oxfordshire
OX25 5HD
UK

Enquiries:

info@everestbiotech.com

Sales:

sales@everestbiotech.com

Tech support:

support@everestbiotech.com

Tel: +44 (0)1869 238326

Fax: +44 (0)1869 238327

US Office

Everest Biotech c/o Abcore

405 Maple Street, Suite A106
Ramona,
CA 92065
USA

Inquiries:

info@everestbiotech.com

Sales:

usasales@everestbiotech.com

Tech support:

support@everestbiotech.com

Tel: 888-320-4628 (toll-free)

Fax: 888-841-9041

www.everestbiotech.com

**Research Use Only. Not for
diagnostic or therapeutic use.**

EB06163 - Goat Anti-P114-RHO-GEF / ARHGEF18 Antibody

Size: 100µg specific antibody in 200µl



Target Protein

Principal Names: ARHGEF18, Rho/Rac guanine nucleotide exchange factor (GEF) 18, P114-RHO-GEF, KIAA0521, MGC15913, Rho-specific guanine nucleotide exchange factor p114, P114-RhoGEF, Rho/Rac guanine nucleotide exchange factor 18

Official Symbol: ARHGEF18

Accession Number(s): NP_056133.2; NP_001124427.1

Human GeneID(s): [23370](#)

Important Comments: This antibody is expected to recognize both reported isoforms (NP_056133.2; NP_001124427.1).

Immunogen

Peptide with sequence C-SAKEDASKEDVIFV, from the C Terminus of the protein sequence according to NP_056133.2; NP_001124427.1.

Please note the [peptide](#) is available for sale.

Purification and Storage

Purified from goat serum by ammonium sulphate precipitation followed by antigen affinity chromatography using the immunizing peptide.

Supplied at 0.5 mg/ml in Tris saline, 0.02% sodium azide, pH7.3 with 0.5% bovine serum albumin.

Aliquot and store at -20°C. Minimize freezing and thawing.

Applications Tested

Peptide ELISA: antibody detection limit dilution 1:128000.

Western blot: Approx 140+90kDa band observed in lysates of cell line Daudi and Caco-2 (calculated MW of 114kDa according to NP_056133.2 and 131kDa according to NP_001124427.1). Recommended concentration: 1-3µg/ml. Primary incubation was 1 hour. This antibody has been successfully used in WB on Human, PMID: 36404918.

Immunofluorescence: This antibody has been successfully used in IF on Human, PMID: 36404918.

Species Reactivity

Tested: Human

Expected from sequence similarity: Human

Specific References

This antibody has been successfully used in WB and IF on Human:

Reiko Satow, Yudai Suzuki, Shinobu Asada, Sae Ota, Masashi Idogawa, Shiori Kubota, Noi Ikeo, Atsuko Yoneda, Kiyoko Fukami

Downregulation of protein kinase C gamma reduces epithelial property and enhances malignant phenotypes in colorectal cancer cells.

iScience. 2022 Nov 4;25(12):105501.

PMID: 36404918

This antibody (previous batch) has been successfully used in WB on Medaka:

Herder C, Swiercz JM, Müller C, Peravali R, Quiring R, Offermanns S, Wittbrodt J, Loosli F.

ArhGEF18 regulates RhoA-Rock2 signaling to maintain neuro-epithelial apico-basal

polarity and proliferation.

Development. 2013 Jul;140(13):2787-97.

PMID: 23698346

This antibody (previous batch) has been successfully used in WB on Human:

Terry SJ, Elbediwy A, Zihni C, Harris AR, Bailly M, Charras GT, Balda MS, Matter K.
Stimulation of Cortical Myosin Phosphorylation by p114RhoGEF Drives Cell Migration and
Tumor Cell Invasion.

PLoS One. 2012;7(11):e50188.

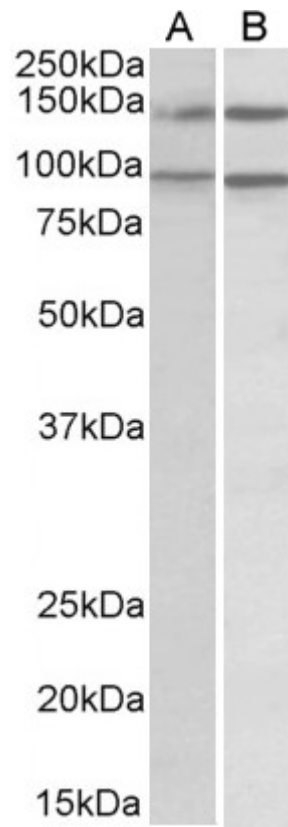
PMID: 23185572

This antibody (previous batch) has been successfully used in WB, IF and IP on Human:

Terry SJ, Zihni C, Elbediwy A, Vitiello E, Leefa Chong San IV, Balda MS, Matter K.
Spatially restricted activation of RhoA signalling at epithelial junctions by p114RhoGEF
drives junction formation and morphogenesis.

Nat Cell Biol. 2011 Feb;13(2):159-66.

PMID: 21258369



EB06163 (0.5 μ g/ml) staining of lysates of cell lines Daudi (A) and Caco-2 (B) (35 μ g protein in RIPA buffer).
Detected by chemiluminescence.