



# SZABO SCANDIC

Part of Europa Biosite

## Produktinformation



Forschungsprodukte & Biochemikalien



Zellkultur & Verbrauchsmaterial



Diagnostik & molekulare Diagnostik



Laborgeräte & Service

Weitere Information auf den folgenden Seiten!  
See the following pages for more information!



### Lieferung & Zahlungsart

siehe unsere [Liefer- und Versandbedingungen](#)

### Zuschläge

- Mindermengenzuschlag
- Trockeneiszuschlag
- Gefahrgutzuschlag
- Expressversand

### SZABO-SCANDIC HandelsgmbH

Quellenstraße 110, A-1100 Wien

T. +43(0)1 489 3961-0

F. +43(0)1 489 3961-7

[mail@szabo-scandic.com](mailto:mail@szabo-scandic.com)

[www.szabo-scandic.com](http://www.szabo-scandic.com)

[linkedin.com/company/szaboscandic](https://www.linkedin.com/company/szaboscandic) 



## UK Office

### Everest Biotech Ltd

Cherwell Innovation Centre  
77 Heyford Park  
Upper Heyford  
Oxfordshire  
OX25 5HD  
UK

Enquiries:

[info@everestbiotech.com](mailto:info@everestbiotech.com)

Sales:

[sales@everestbiotech.com](mailto:sales@everestbiotech.com)

Tech support:

[support@everestbiotech.com](mailto:support@everestbiotech.com)

Tel: +44 (0)1869 238326

Fax: +44 (0)1869 238327

## US Office

### Everest Biotech c/o Abcore

405 Maple Street, Suite A106  
Ramona,  
CA 92065  
USA

Inquiries:

[info@everestbiotech.com](mailto:info@everestbiotech.com)

Sales:

[usasales@everestbiotech.com](mailto:usasales@everestbiotech.com)

Tech support:

[support@everestbiotech.com](mailto:support@everestbiotech.com)

Tel: 888-320-4628 (toll-free)

Fax: 888-841-9041

[www.everestbiotech.com](http://www.everestbiotech.com)

**Research Use Only. Not for  
diagnostic or therapeutic use.**

## EB06196 - Goat Anti-GIPC1 / NIP Antibody

Size: 100µg specific antibody in 200µl



### Target Protein

**Principal Names:** GIPC1, NIP, GIPC PDZ domain containing family, member 1, C19orf3, GIPC, GLUT1CBP, Hs.6454, IIP-1, MGC15889, MGC3774, RGS19IP1, SEMCAP, SYNECTIIN, TIP-2, GLUT1 C-terminal binding protein, IGF-1 receptor interacting protein 1, regulator of G-protein signalling 19 interacting protein 1, synectin, SYNECTIN

**Official Symbol:** GIPC1

**Accession Number(s):** NP\_005707.1; NP\_974197.1; NP\_974199.1; NP\_974196.1; NP\_974198.1; NP\_974223.1

**Human GeneID(s):** [10755](#)

**Non-Human GeneID(s):** 67903 (mouse), 83823 (rat)

**Important Comments:** This antibody is expected to recognize both isoform 1 (NP\_005707.1, NP\_974197.1 and NP\_974199.1) and isoform 2 (NP\_974196.1, NP\_974198.1 and NP\_974223.1).

### Immunogen

Peptide with sequence C-GAIGDAKVGGRY, from the C Terminus of the protein sequence according to NP\_005707.1; NP\_974197.1; NP\_974199.1; NP\_974196.1; NP\_974198.1; NP\_974223.1.

Please note the [peptide](#) is available for sale.

### Purification and Storage

Purified from goat serum by ammonium sulphate precipitation followed by antigen affinity chromatography using the immunizing peptide.

Supplied at 0.5 mg/ml in Tris saline, 0.02% sodium azide, pH7.3 with 0.5% bovine serum albumin.

Aliquot and store at -20°C. Minimize freezing and thawing.

### Applications Tested

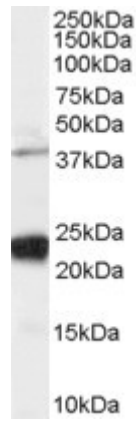
**Peptide ELISA:** antibody detection limit dilution 1:128000.

**Western blot:** Approx 38kDa and strong 23-24kDa bands observed in lysates of cell line HeLa, and approx 24kDa also observed in Human Pancreas, Kidney and Muscle lysates (calculated MW of 36.0kDa according to NP\_005707.1, NP\_974197.1 and NP\_974199.1 and 26.1kDa according to NP\_974198.1 and NP\_974223.1). In transfected HEK293 transiently expressing GIPC1 isoform 1 a band of approx. 40kDa is observed. This band is not observed in the non-transfected HEK293. Recommended concentration: 0.03-0.1µg/ml.

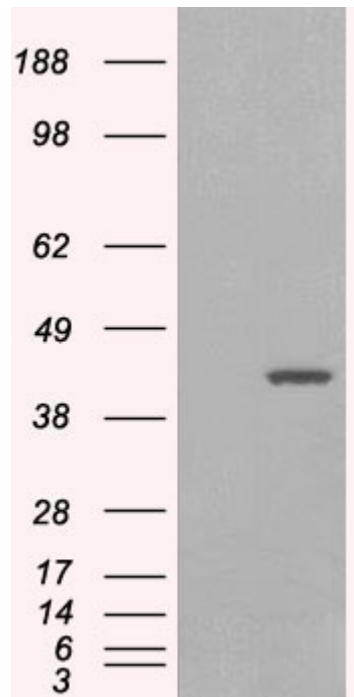
### Species Reactivity

**Tested:** Human

**Expected from sequence similarity:** Human, Mouse, Rat, Cow



EB06196 staining (0.03 $\mu$ g/ml) of Human HeLa cell lysate (RIPA buffer, 35 $\mu$ g total protein per lane). Primary incubated for 1 hour. Detected by chemiluminescence.



HEK293 overexpressing GIPC1 isoform 1 (RC216466) and probed with EB06196 (mock transfection in first lane), tested by Origene.