



SZABO SCANDIC

Part of Europa Biosite

Produktinformation



Forschungsprodukte & Biochemikalien



Zellkultur & Verbrauchsmaterial



Diagnostik & molekulare Diagnostik



Laborgeräte & Service

Weitere Information auf den folgenden Seiten!
See the following pages for more information!



Lieferung & Zahlungsart

siehe unsere [Liefer- und Versandbedingungen](#)

Zuschläge

- Mindermengenzuschlag
- Trockeneiszuschlag
- Gefahrgutzuschlag
- Expressversand

SZABO-SCANDIC HandelsgmbH

Quellenstraße 110, A-1100 Wien

T. +43(0)1 489 3961-0

F. +43(0)1 489 3961-7

mail@szabo-scandic.com

www.szabo-scandic.com

[linkedin.com/company/szaboscandic](https://www.linkedin.com/company/szaboscandic) 



UK Office

Everest Biotech Ltd

Cherwell Innovation Centre
77 Heyford Park
Upper Heyford
Oxfordshire
OX25 5HD
UK

Enquiries:

info@everestbiotech.com

Sales:

sales@everestbiotech.com

Tech support:

support@everestbiotech.com

Tel: +44 (0)1869 238326

Fax: +44 (0)1869 238327

US Office

Everest Biotech c/o Abcore

405 Maple Street, Suite A106
Ramona,
CA 92065
USA

Inquiries:

info@everestbiotech.com

Sales:

usasales@everestbiotech.com

Tech support:

support@everestbiotech.com

Tel: 888-320-4628 (toll-free)

Fax: 888-841-9041

www.everestbiotech.com

**Research Use Only. Not for
diagnostic or therapeutic use.**

EB06206 - Goat Anti-POLL / POLkappa Antibody

Size: 100µg specific antibody in 200µl



Target Protein

Principal Names: POLL, BETA-N, POL-KAPPA, polymerase (DNA directed), lambda, polymerase (DNA-directed), lambda, DNA polymerase kappa (DNA polymerase beta-N), RP11-529I10.1, BETAN, FLJ46002, POLKAPPA, DNA polymerase beta-2, DNA polymerase kappa (DNA polymerase beta-N), DNA polymerase lamda2, DNA-directed DNA polymerase lambda, OTTHUMP00000020323, pol beta2, pol lambda

Official Symbol: POLL

Accession Number(s): NP_037406.1

Human GeneID(s): [27343](#)

Non-Human GeneID(s): 56626 (mouse)

Important Comments: It has been brought to our attention that this product may crossreact with Pol beta (NP_002681), an evolutionarily related polymerase with a predicted size of 39 kDa. The overall % of identity is not very high (about 32% in the core) but considering only the peptide that we used as immunogen the two share the sequence YREP**R** at the C-terminus. Further the protein structures appear to be very similar in this region.

Immunogen

Peptide with sequence C-LGLPYREPAERDW, from the C Terminus of the protein sequence according to NP_037406.1.

Please note the [peptide](#) is available for sale.

Purification and Storage

Purified from goat serum by ammonium sulphate precipitation followed by antigen affinity chromatography using the immunizing peptide.

Supplied at 0.5 mg/ml in Tris saline, 0.02% sodium azide, pH7.3 with 0.5% bovine serum albumin.

Aliquot and store at -20°C. Minimize freezing and thawing.

Applications Tested

Peptide ELISA: antibody detection limit dilution 1:32000.

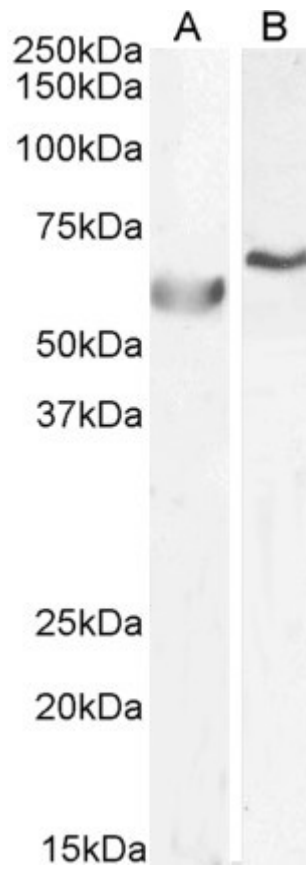
Western blot: Approx 60kDa band observed in cell lysates of A549 and approx 60-70kDa in cell lysates of HepG2 (calculated MW of 63.5kDa according to Human NP_037406.1).

Recommended concentration: 0.5-1µg/ml.

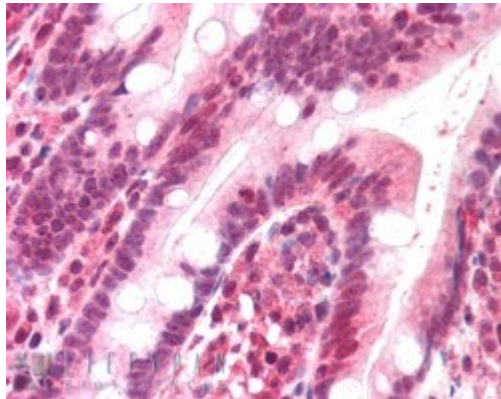
Species Reactivity

Tested: Human

Expected from sequence similarity: Human



EB06206 (0.5 μ g/ml) staining of A549 (A) and (1 μ g/ μ l) HepG2 (B) cell lysate (35 μ g protein in RIPA buffer). Primary incubation was 1 hour. Detected by chemiluminescence.



EB06206 (5 μ g/ml) staining of paraffin embedded Human Small Intestine. Steamed antigen retrieval with citrate buffer pH 6, AP-staining. **This data is from a previous batch, not on sale.**