



SZABO SCANDIC

Part of Europa Biosite

Produktinformation



Forschungsprodukte & Biochemikalien



Zellkultur & Verbrauchsmaterial



Diagnostik & molekulare Diagnostik



Laborgeräte & Service

Weitere Information auf den folgenden Seiten!
See the following pages for more information!



Lieferung & Zahlungsart

siehe unsere [Liefer- und Versandbedingungen](#)

Zuschläge

- Mindermengenzuschlag
- Trockeneiszuschlag
- Gefahrgutzuschlag
- Expressversand

SZABO-SCANDIC HandelsgmbH

Quellenstraße 110, A-1100 Wien

T. +43(0)1 489 3961-0

F. +43(0)1 489 3961-7

mail@szabo-scandic.com

www.szabo-scandic.com

[linkedin.com/company/szaboscandic](https://www.linkedin.com/company/szaboscandic) 



UK Office

Everest Biotech Ltd

Cherwell Innovation Centre
77 Heyford Park
Upper Heyford
Oxfordshire
OX25 5HD
UK

Enquiries:

info@everestbiotech.com

Sales:

sales@everestbiotech.com

Tech support:

support@everestbiotech.com

Tel: +44 (0)1869 238326

Fax: +44 (0)1869 238327

US Office

Everest Biotech c/o Abcore

405 Maple Street, Suite A106
Ramona,
CA 92065
USA

Inquiries:

info@everestbiotech.com

Sales:

usasales@everestbiotech.com

Tech support:

support@everestbiotech.com

Tel: 888-320-4628 (toll-free)

Fax: 888-841-9041

www.everestbiotech.com

**Research Use Only. Not for
diagnostic or therapeutic use.**

EB06256 - Goat Anti-VPS26A Antibody

Size: 100µg specific antibody in 200µl



Target Protein

Principal Names: VPS26A, vacuolar protein sorting 26 homologue A (yeast), FLJ12930, HB58, Hbeta58, VPS26, Hbeta58 homolog, vacuolar protein sorting 26 (yeast homolog), vacuolar protein sorting 26 (yeast), vacuolar protein sorting 26 homolog A, vacuolar protein sorting 26 homolog A (S. pombe), PEP8A, OTTHUMP0000019721, vacuolar protein sorting 26 A

Official Symbol: VPS26A

Accession Number(s): NP_004887.2

Human GeneID(s): [9559](#)

Non-Human GeneID(s): 30930 (mouse)

Important Comments: This antibody is expected to recognize isoform 1 (NP_004887.2) only.

Immunogen

Peptide with sequence C-SPESQASAEQPEM, from the C Terminus of the protein sequence according to NP_004887.2.

Please note the [peptide](#) is available for sale.

Purification and Storage

Purified from goat serum by ammonium sulphate precipitation followed by antigen affinity chromatography using the immunizing peptide.

Supplied at 0.5 mg/ml in Tris saline, 0.02% sodium azide, pH7.3 with 0.5% bovine serum albumin.

Aliquot and store at -20°C. Minimize freezing and thawing.

Applications Tested

Peptide ELISA: antibody detection limit dilution 1:4000.

Western blot: Approx 40kDa band observed in Human Kidney lysates (calculated MW of 38.2 kDa according to NP_004887.2). In transfected HEK293 transiently expressing VPS26A a band of approx. 40kDa is observed. This band is not observed in the non-transfected HEK293. Recommended for use at 1-3µg/ml.

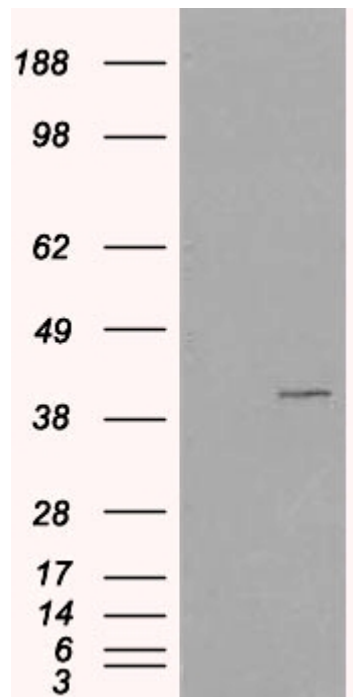
Species Reactivity

Tested: Human

Expected from sequence similarity: Human, Mouse, Rat, Pig, Cow



EB06256 staining (1µg/ml) of Human Kidney lysate (RIPA buffer, 35µg total protein per lane). Primary incubated for 1 hour. Detected by chemiluminescence.



HEK293 overexpressing VPS26A (RC205353) and probed with EB06256 (mock transfection in first lane), tested by Origene.