



# SZABO SCANDIC

Part of Europa Biosite

## Produktinformation



Forschungsprodukte & Biochemikalien



Zellkultur & Verbrauchsmaterial



Diagnostik & molekulare Diagnostik



Laborgeräte & Service

Weitere Information auf den folgenden Seiten!  
See the following pages for more information!



### Lieferung & Zahlungsart

siehe unsere [Liefer- und Versandbedingungen](#)

### Zuschläge

- Mindermengenzuschlag
- Trockeneiszuschlag
- Gefahrgutzuschlag
- Expressversand

### SZABO-SCANDIC HandelsgmbH

Quellenstraße 110, A-1100 Wien

T. +43(0)1 489 3961-0

F. +43(0)1 489 3961-7

[mail@szabo-scandic.com](mailto:mail@szabo-scandic.com)

[www.szabo-scandic.com](http://www.szabo-scandic.com)

[linkedin.com/company/szaboscandic](https://www.linkedin.com/company/szaboscandic) 



## UK Office

### Everest Biotech Ltd

Cherwell Innovation Centre  
77 Heyford Park  
Upper Heyford  
Oxfordshire  
OX25 5HD  
UK

Enquiries:

[info@everestbiotech.com](mailto:info@everestbiotech.com)

Sales:

[sales@everestbiotech.com](mailto:sales@everestbiotech.com)

Tech support:

[support@everestbiotech.com](mailto:support@everestbiotech.com)

Tel: +44 (0)1869 238326

Fax: +44 (0)1869 238327

## US Office

### Everest Biotech c/o Abcore

405 Maple Street, Suite A106  
Ramona,  
CA 92065  
USA

Inquiries:

[info@everestbiotech.com](mailto:info@everestbiotech.com)

Sales:

[usasales@everestbiotech.com](mailto:usasales@everestbiotech.com)

Tech support:

[support@everestbiotech.com](mailto:support@everestbiotech.com)

Tel: 888-320-4628 (toll-free)

Fax: 888-841-9041

[www.everestbiotech.com](http://www.everestbiotech.com)

**Research Use Only. Not for  
diagnostic or therapeutic use.**

## EB06263 - Goat Anti-Clk1 / STK35 Antibody

Size: 100µg specific antibody in 200µl



### Target Protein

**Principal Names:** STK35, Clk1, bA550O8.2, bA550O8.2 CLIK1, serine/threonine kinase 35, CLP-36 interacting kinase, CLIK1, STK35L1, OTTHUMP00000030006, serine threonine kinase 35 long form

**Official Symbol:** STK35

**Accession Number(s):** NP\_543026.2

**Human GeneID(s):** [140901](#)

**Non-Human GeneID(s):** 67333 (mouse)

### Immunogen

Peptide with sequence ELETRMDQVTCAA, from the C Terminus of the protein sequence according to NP\_543026.2.

Please note the [peptide](#) is available for sale.

### Purification and Storage

Purified from goat serum by ammonium sulphate precipitation followed by antigen affinity chromatography using the immunizing peptide.

Supplied at 0.5 mg/ml in Tris saline, 0.02% sodium azide, pH7.3 with 0.5% bovine serum albumin.

Aliquot and store at -20°C. Minimize freezing and thawing.

### Applications Tested

**Peptide ELISA:** antibody detection limit dilution 1:16000.

**Western blot:** Approx 55kDa band observed in Human Breast cancer and in Mouse and Pig Testis lysates, and approx. 58kDa in nuclear lysates of cell line HEK293 (calculated MW of 58.1kDa according to Human NP\_543026.2, 59.5kDa according to Mouse NP\_899085.3 and 59.2kDa according to XP\_005672850.1 Pig XP\_005672850.1).

Recommended concentration: 1-3µg/ml. Primary incubation 1 hour at room temperature.

This product has been successfully used in WB on Human: Goyal P et al, PLoS One.

2009 Sep 16;4(9):e6981. PMID: 19756140.

**IHC:** In paraffin embedded Human Testis shows granular cytoplasmic staining of Leydig cells. Recommended concentration: 10µg/ml.

**Immunofluorescence:** Strong expression of the protein seen in the nuclei of U2OS cells.

Recommended concentration: 10µg/ml.

**Flow Cytometry:** Flow cytometric analysis of HEK293 cells. Recommended concentration: 10ug/ml.

### Species Reactivity

**Tested:** Human, Mouse, Pig

**Expected from sequence similarity:** Human, Mouse, Rat, Dog, Pig, Cow

### Specific Reference

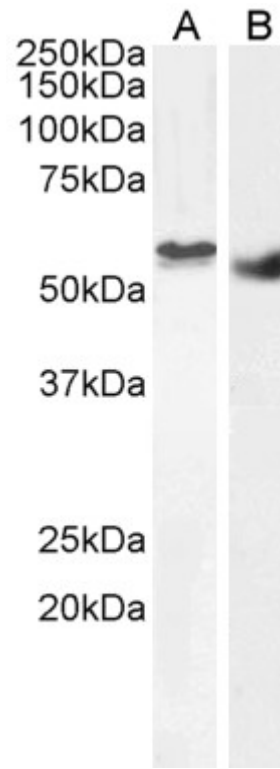
**This antibody has been successfully used in WB on Human:**

Goyal P, Behring A, Kumar A, Siess W.

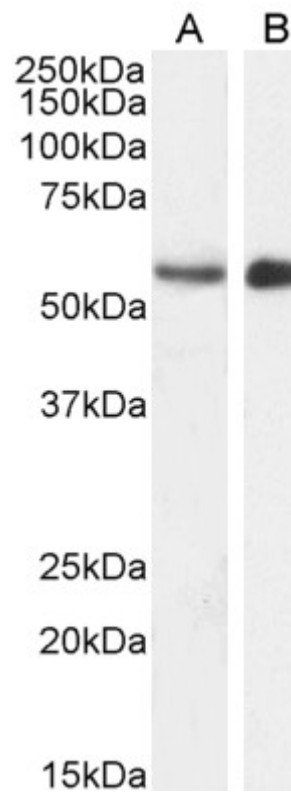
Identifying and characterizing a novel protein kinase STK35L1 and deciphering its orthologs and close-homologs in vertebrates.

PLoS One. 2009 Sep 16;4(9):e6981.

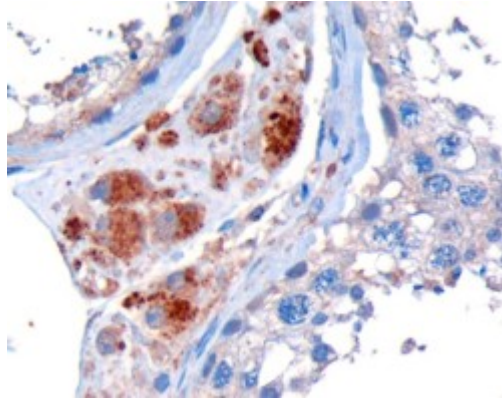
PMID: 19756140



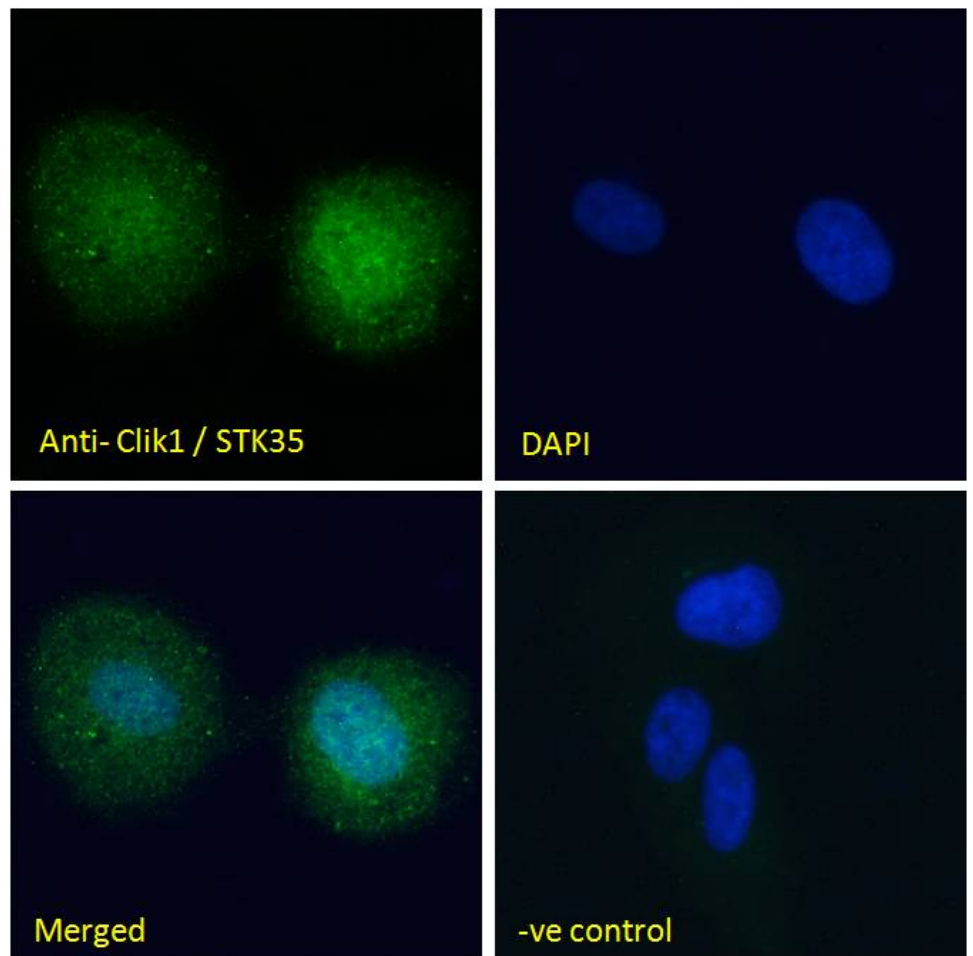
EB06263 (2 $\mu$ g/ml) staining of nuclear HEK293 (A) and (1 $\mu$ g/ml) Human Breast cancer (B) lysate (35 $\mu$ g protein in RIPA buffer). Detected by chemiluminescence.



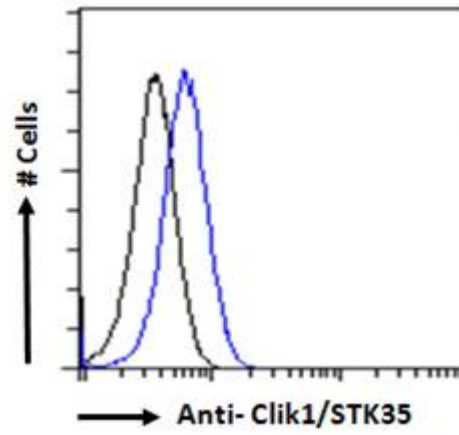
EB06263 (1 $\mu$ g/ml) staining of Mouse (A) and (2 $\mu$ g/ml) Pig (B) Testes lysate (35 $\mu$ g protein in RIPA buffer). Detected by chemiluminescence.



EB06263 (10µg/ml) staining of paraffin embedded Human Testis. Microwaved antigen retrieval with Tris/EDTA buffer pH9, HRP-staining.



EB06263 Immunofluorescence analysis of paraformaldehyde fixed U2OS cells, permeabilized with 0.15% Triton. Primary incubation 1hr (10ug/ml) followed by Alexa Fluor 488 secondary antibody (2ug/ml), showing nuclear staining. The nuclear stain is DAPI (blue). Negative control: Unimmunized goat IgG (10ug/ml) followed by Alexa Fluor 488 secondary antibody (2ug/ml).



EB06263 Flow cytometric analysis of paraformaldehyde fixed HEK293 cells (blue line), permeabilized with 0.5% Triton. Primary incubation 1hr (10ug/ml) followed by Alexa Fluor 488 secondary antibody (1ug/ml). IgG control: Unimmunized goat IgG (black line) followed by Alexa Fluor 488 secondary antibody.