



SZABO SCANDIC

Part of Europa Biosite

Produktinformation



Forschungsprodukte & Biochemikalien



Zellkultur & Verbrauchsmaterial



Diagnostik & molekulare Diagnostik



Laborgeräte & Service

Weitere Information auf den folgenden Seiten!
See the following pages for more information!



Lieferung & Zahlungsart

siehe unsere [Liefer- und Versandbedingungen](#)

Zuschläge

- Mindermengenzuschlag
- Trockeneiszuschlag
- Gefahrgutzuschlag
- Expressversand

SZABO-SCANDIC HandelsgmbH

Quellenstraße 110, A-1100 Wien

T. +43(0)1 489 3961-0

F. +43(0)1 489 3961-7

mail@szabo-scandic.com

www.szabo-scandic.com

[linkedin.com/company/szaboscandic](https://www.linkedin.com/company/szaboscandic) 



UK Office

Everest Biotech Ltd

Cherwell Innovation Centre
77 Heyford Park
Upper Heyford
Oxfordshire
OX25 5HD
UK

Enquiries:

info@everestbiotech.com

Sales:

sales@everestbiotech.com

Tech support:

support@everestbiotech.com

Tel: +44 (0)1869 238326

Fax: +44 (0)1869 238327

US Office

Everest Biotech c/o Abcore

405 Maple Street, Suite A106
Ramona,
CA 92065
USA

Inquiries:

info@everestbiotech.com

Sales:

usasales@everestbiotech.com

Tech support:

support@everestbiotech.com

Tel: 888-320-4628 (toll-free)

Fax: 888-841-9041

www.everestbiotech.com

**Research Use Only. Not for
diagnostic or therapeutic use.**

EB06271 - Goat Anti-SH3BP1 Antibody

Size: 100µg specific antibody in 200µl



Target Protein

Principal Names: SH3BP1, SH3-domain binding protein 1, SH3 domain binding protein 1, OTTHUMP00000028981

Official Symbol: SH3BP1

Accession Number(s): NP_061830.3

Human GeneID(s): [23616](#)

Immunogen

Peptide with sequence C-PQPRPRSLASETN, from the C Terminus of the protein sequence according to NP_061830.3.

Please note the [peptide](#) is available for sale.

Purification and Storage

Purified from goat serum by ammonium sulphate precipitation followed by antigen affinity chromatography using the immunizing peptide.

Supplied at 0.5 mg/ml in Tris saline, 0.02% sodium azide, pH7.3 with 0.5% bovine serum albumin.

Aliquot and store at -20°C. Minimize freezing and thawing.

Applications Tested

Peptide ELISA: antibody detection limit dilution 1:16000.

Western blot: Approx 70kDa band observed in Human Lung and Kidney lysates (calculated MW of 75.7kDa according to NP_061830.3). Recommended for use at 1-3µg/ml.

IHC: In paraffin embedded Human Kidney, stains the cytoplasm of lymphoid cells in the interstitial parenchyma and of lymphocytes in a glomerulus. Recommended concentration: 0.3µg/ml.

Immunocytochemistry: This antibody has proved to work very well in Caco-2 cells in Elbediwy et al, J.Biol. Chem, 2012 (in press).

Species Reactivity

Tested: Human

Expected from sequence similarity: Human

Background Reference

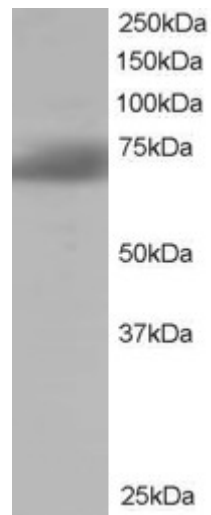
This antibody has been successfully used in Time-lapse microscopy on Rat:

Parrini MC, Sadou-Dubourgoux A, Aoki K, Kunida K, Biondini M, Hatzoglou A, Pouillet P, Formstecher E, Yeaman C, Matsuda M, Rossé C, Camonis J.

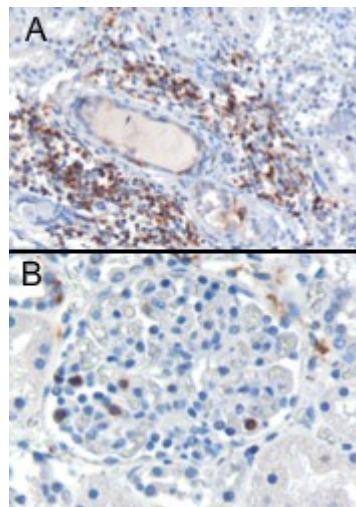
SH3BP1, an exocyst-associated RhoGAP, inactivates Rac1 at the front to drive cell motility.

Mol Cell. 2011 Jun 10;42(5):650-61.

PMID: 21658605



EB06271 staining (1 μ g/ml) of Human Brain lysate (RIPA buffer, 35 μ g total protein per lane). Primary incubated for 1 hour. Detected by chemiluminescence.



EB06271 (0.3 μ g/ml) staining of paraffin embedded Human Kidney. Cytoplasmic staining of lymphocytes A) in the interstitial parenchyma of the kidney. B) in a glomerulus of the kidney. Microwaved antigen retrieval with citrate buffer pH 6, HRP-staining.