



SZABO SCANDIC

Part of Europa Biosite

Produktinformation



Forschungsprodukte & Biochemikalien



Zellkultur & Verbrauchsmaterial



Diagnostik & molekulare Diagnostik



Laborgeräte & Service

Weitere Information auf den folgenden Seiten!
See the following pages for more information!



Lieferung & Zahlungsart

siehe unsere [Liefer- und Versandbedingungen](#)

Zuschläge

- Mindermengenzuschlag
- Trockeneiszuschlag
- Gefahrgutzuschlag
- Expressversand

SZABO-SCANDIC HandelsgmbH

Quellenstraße 110, A-1100 Wien

T. +43(0)1 489 3961-0

F. +43(0)1 489 3961-7

mail@szabo-scandic.com

www.szabo-scandic.com

[linkedin.com/company/szaboscandic](https://www.linkedin.com/company/szaboscandic) 



UK Office

Everest Biotech Ltd

Cherwell Innovation Centre
77 Heyford Park
Upper Heyford
Oxfordshire
OX25 5HD
UK

Enquiries:

info@everestbiotech.com

Sales:

sales@everestbiotech.com

Tech support:

support@everestbiotech.com

Tel: +44 (0)1869 238326

Fax: +44 (0)1869 238327

US Office

Everest Biotech c/o Abcore

405 Maple Street, Suite A106
Ramona,
CA 92065
USA

Inquiries:

info@everestbiotech.com

Sales:

usasales@everestbiotech.com

Tech support:

support@everestbiotech.com

Tel: 888-320-4628 (toll-free)

Fax: 888-841-9041

www.everestbiotech.com

**Research Use Only. Not for
diagnostic or therapeutic use.**

EB06288 - Goat Anti-SIRT4 Antibody

Size: 100µg specific antibody in 200µl



Target Protein

Principal Names: SIRT4, SIR2L4, sirtuin (silent mating type information regulation 2 homolog) 4 (*S. cerevisiae*), sirtuin silent mating type information regulation 2 homolog 4 (*S. cerevisiae*), MGC130046, MGC130047, MGC57437, SIR2L4, sirtuin 4, sir2-like 4, sirtuin 4, sirtuin type 4

Official Symbol: SIRT4

Accession Number(s): NP_036372.1

Human GeneID(s): [23409](#)

Non-Human GeneID(s): 75387 (mouse)

Immunogen

Peptide with sequence SRCGELLPLIDPC, from the C Terminus of the protein sequence according to NP_036372.1.

Please note the [peptide](#) is available for sale.

Purification and Storage

Purified from goat serum by ammonium sulphate precipitation followed by antigen affinity chromatography using the immunizing peptide.

Supplied at 0.5 mg/ml in Tris saline, 0.02% sodium azide, pH7.3 with 0.5% bovine serum albumin.

Aliquot and store at -20°C. Minimize freezing and thawing.

Applications Tested

Peptide ELISA: antibody detection limit dilution 1:16000.

Western blot: Approx. 37kDa band observed in lysates of cell lines U937 and U251, and approx. 38kDa in lysates of cell lines K562, MCF7 and U2OS and in preliminary testing of Rat Kidney lysate (calculated MW of 35.2kDa according to NP_036372.1). Recommended concentration: 0.75-3µg/ml. Primary incubation 1 hour at room temperature.

IHC: Paraffin embedded Human Kidney, Placenta and Brain (Cortex). Recommended concentration: 7µg/ml.

Species Reactivity

Tested: Human

Expected from sequence similarity: Human, Mouse, Rat, Dog, Pig, Cow

Specific References

This antibody (previous batch) has been successfully used in Western blot on Rat:

Thaís Furtado Camargo, Ariane Maria Zanesco, Kayo Augusto Salandin Pacher, Thiago Antonio Moretti Andrade, Armindo Antonio Alves, Maria Esméria Corezola do Amaral
Physiological profile regulation during weight gain and loss by ovariectomized 2 females: importance of SIRT1 and SIRT4

Am J Physiol Endocrinol Metab. 2020 Aug 31. doi: 10.1152/ajpendo.00465.2019
PMID: 32865007

This antibody (previous batch) has been successfully used in Western blot on Dog:

Marfè G, Tafani M, Fiorito F, Pagnini U, Iovane G, De Martino L.

Involvement of FOXO transcription factors, TRAIL-FasL/Fas, and sirtuin proteins family in canine coronavirus type II-induced apoptosis.

PLoS One. 2011;6(11).

PMID: 22087287

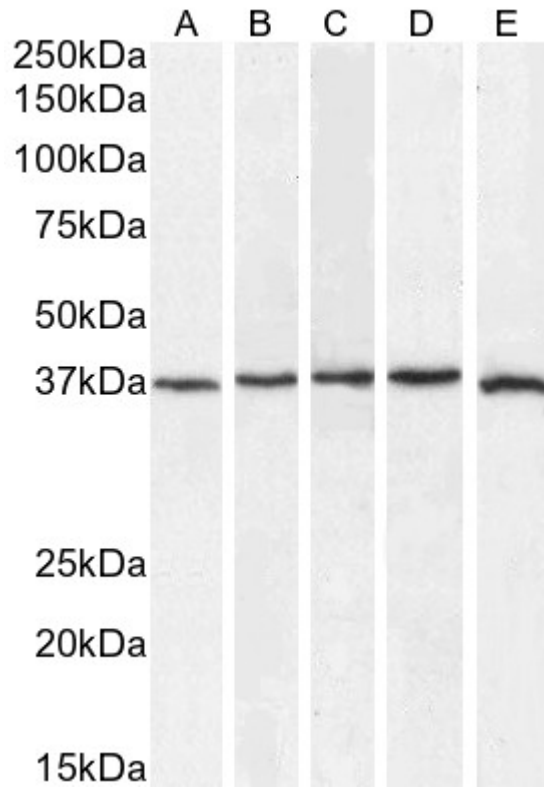
This antibody (previous batch) has been successfully used on Rat in the following paper:

do Amaral ME, Ueno M, Oliveira CA, Borsonello NC, Vanzela EC, Ribeiro RA, Alves PL, Barbosa HC, Carneiro EM, Boschero AC.

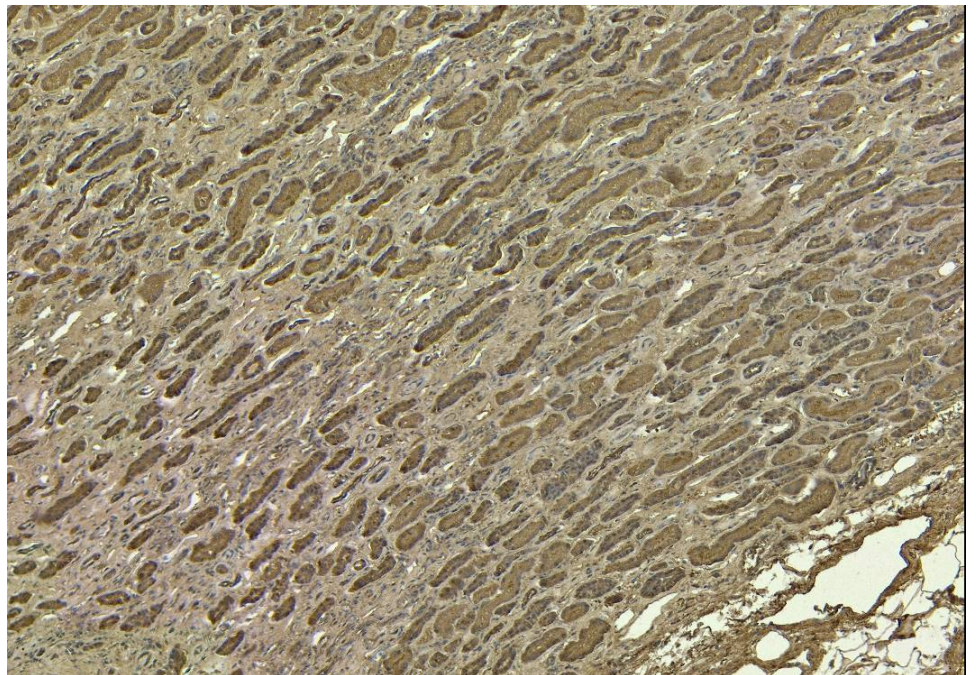
Reduced expression of SIRT1 is associated with diminished glucose-induced insulin secretion in islets from calorie-restricted rats.

J Nutr Biochem. 2011 Jun;22(6):554-9.

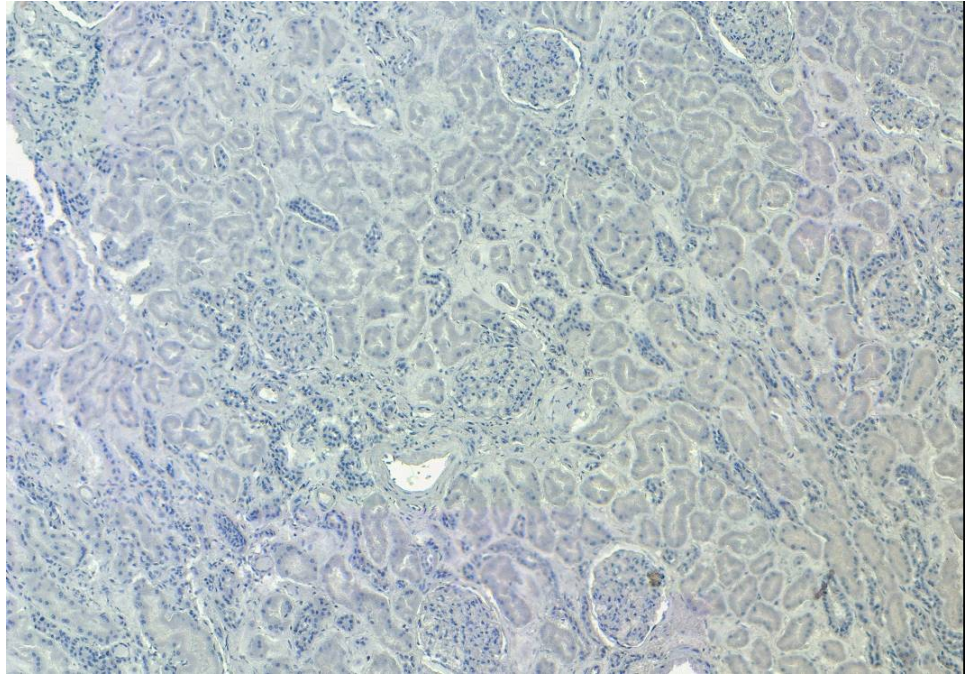
PMID: 20801633



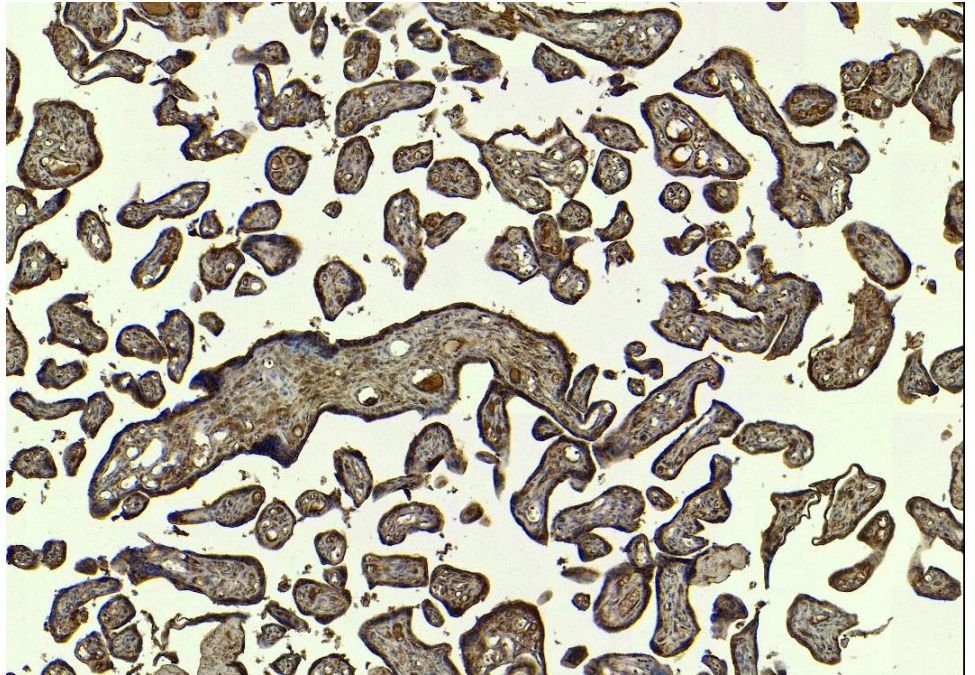
EB06288 (0.75ug/ml) staining of U937 (A), (2ug/ml) K562 (B) and (3ug/ml) U2OS (C), MCF7 (D), and U251 (E) cell lysate (35µg protein in RIPA buffer). Detected by chemiluminescence.



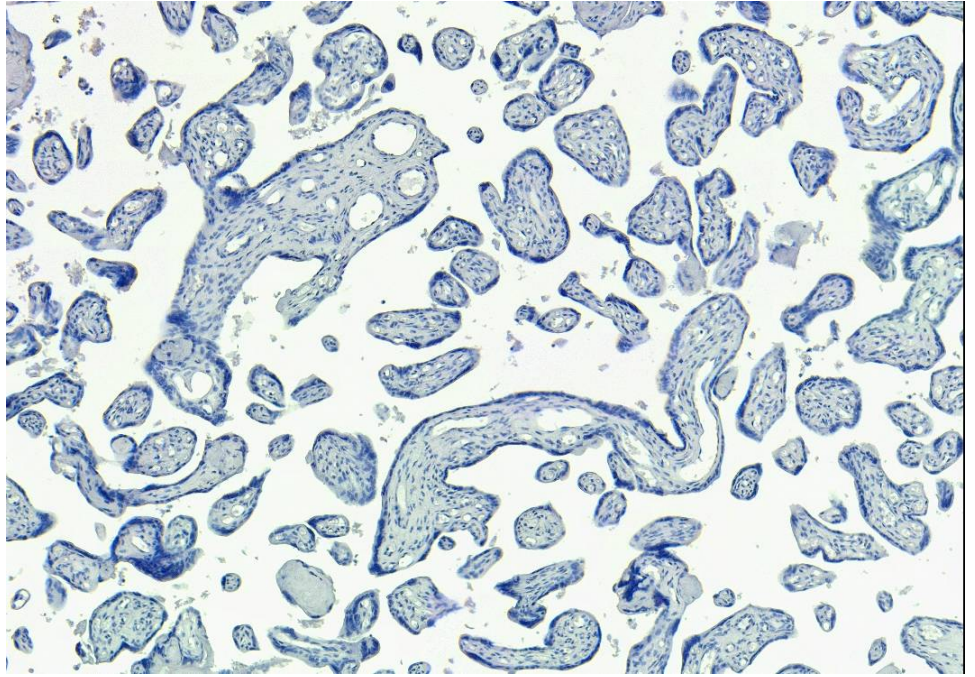
EB06288 (7µg/ml) staining of paraffin embedded Human Kidney. Heat induced antigen retrieval with citrate buffer pH 6, HRP-staining.



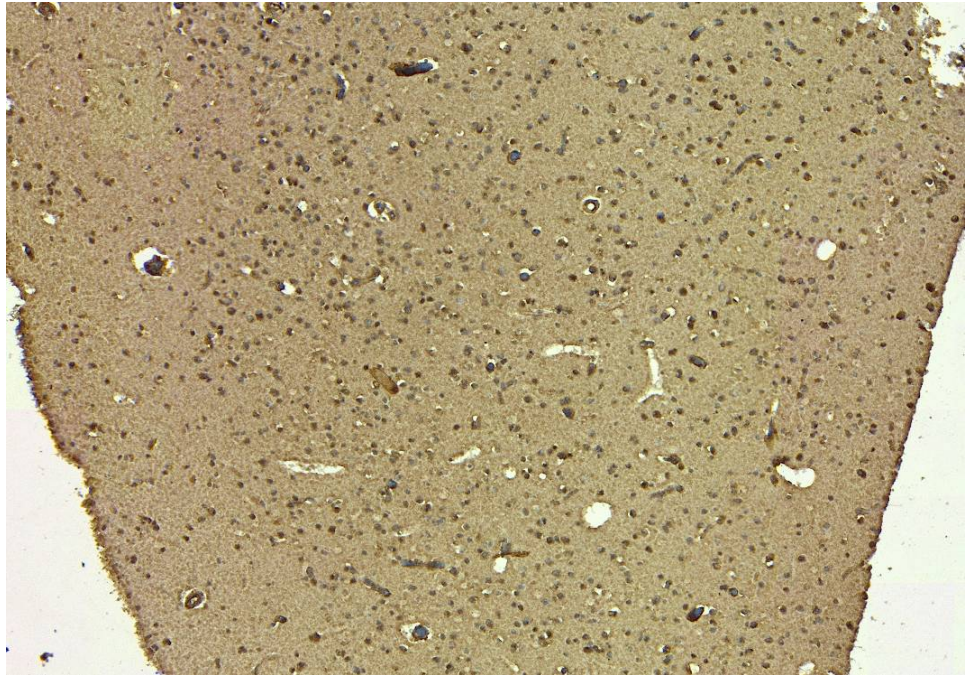
EB06288 Negative Control showing staining of paraffin embedded Human Kidney, with no primary antibody.



EB06288 (7 μ g/ml) staining of paraffin embedded Human Placenta. Heat induced antigen retrieval with citrate buffer Ph 6, HRP-staining.



EB06288 Negative Control showing staining of paraffin embedded Human Placenta, with no primary antibody.



EB06288 (7 μ g/ml) staining of paraffin embedded Human Cortex. Heat induced antigen retrieval with citrate buffer Ph 6, HRP-staining.



EB06288 Negative Control showing staining of paraffin embedded Human Cortex, with no primary antibody.