



SZABO SCANDIC

Part of Europa Biosite

Produktinformation



Forschungsprodukte & Biochemikalien



Zellkultur & Verbrauchsmaterial



Diagnostik & molekulare Diagnostik



Laborgeräte & Service

Weitere Information auf den folgenden Seiten!
See the following pages for more information!



Lieferung & Zahlungsart

siehe unsere [Liefer- und Versandbedingungen](#)

Zuschläge

- Mindermengenzuschlag
- Trockeneiszuschlag
- Gefahrgutzuschlag
- Expressversand

SZABO-SCANDIC HandelsgmbH

Quellenstraße 110, A-1100 Wien

T. +43(0)1 489 3961-0

F. +43(0)1 489 3961-7

mail@szabo-scandic.com

www.szabo-scandic.com

[linkedin.com/company/szaboscandic](https://www.linkedin.com/company/szaboscandic) 



UK Office

Everest Biotech Ltd

Cherwell Innovation Centre
77 Heyford Park
Upper Heyford
Oxfordshire
OX25 5HD
UK

Enquiries:

info@everestbiotech.com

Sales:

sales@everestbiotech.com

Tech support:

support@everestbiotech.com

Tel: +44 (0)1869 238326

Fax: +44 (0)1869 238327

US Office

Everest Biotech c/o Abcore

405 Maple Street, Suite A106
Ramona,
CA 92065
USA

Inquiries:

info@everestbiotech.com

Sales:

usasales@everestbiotech.com

Tech support:

support@everestbiotech.com

Tel: 888-320-4628 (toll-free)

Fax: 888-841-9041

www.everestbiotech.com

**Research Use Only. Not for
diagnostic or therapeutic use.**

EB06310 - Goat Anti-DDX5 / p68 RNA helicase Antibody

Size: 100µg specific antibody in 200µl



Target Protein

Principal Names: DDX5, P68, HLR1, G17P1, HUMP68, DEAD/H (Asp-Glu-Ala-Asp/His) box polypeptide 5 (RNA helicase, 68kDa), RNA-dependent ATPase, DEAD/H box-5 (RNA helicase, 68kD), DEAD/H (Asp-Glu-Ala-Asp/His) box polypeptide 5 (RNA helicase, 68kD), DEAD (Asp-Glu-Ala-Asp) box polypeptide 5, DKFZp434E109, DKFZp686J01190, ATP-dependent RNA helicase DDX5, DEAD box-5

Official Symbol: DDX5

Accession Number(s): NP_004387.1

Human GeneID(s): [1655](#)

Non-Human GeneID(s): 13207 (mouse)

Immunogen

Peptide with sequence C-PMIGYPMPTGYSQ, from the C Terminus of the protein sequence according to NP_004387.1.

Please note the [peptide](#) is available for sale.

Purification and Storage

Purified from goat serum by ammonium sulphate precipitation followed by antigen affinity chromatography using the immunizing peptide.

Supplied at 0.5 mg/ml in Tris saline, 0.02% sodium azide, pH7.3 with 0.5% bovine serum albumin.

Aliquot and store at -20°C. Minimize freezing and thawing.

Applications Tested

Peptide ELISA: antibody detection limit dilution 1:2000.

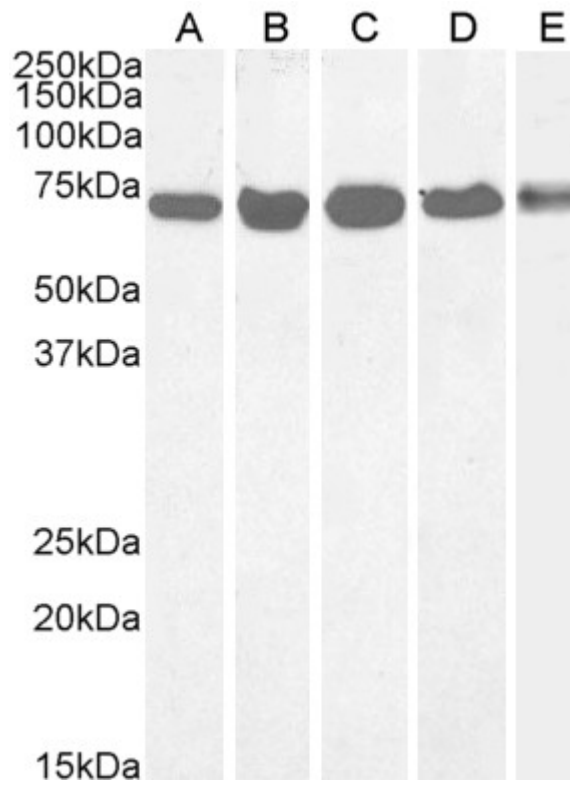
Western blot: Approx 70kDa band observed in nuclear lysates of cell lines NIH3T3, A431, HeLa and Jurkat (calculated MW of 69.1kDa according to NP_004387.1).

Recommended concentration: 0.3-1µg/ml. Primary incubation was 1 hour.

Species Reactivity

Tested: Human, Mouse

Expected from sequence similarity: Human, Mouse, Rat, Dog



EB06310 (0.5 μ g/ml) staining of cell lines A431(A), HeLa(B), HepG2(C), Jurkat(D) and NIH3T3 (E) lysate (35 μ g protein in RIPA buffer). Primary incubation was 1 hour. Detected by chemiluminescence.