



# SZABO SCANDIC

Part of Europa Biosite

## Produktinformation



Forschungsprodukte & Biochemikalien



Zellkultur & Verbrauchsmaterial



Diagnostik & molekulare Diagnostik



Laborgeräte & Service

Weitere Information auf den folgenden Seiten!  
See the following pages for more information!



### Lieferung & Zahlungsart

siehe unsere [Liefer- und Versandbedingungen](#)

### Zuschläge

- Mindermengenzuschlag
- Trockeneiszuschlag
- Gefahrgutzuschlag
- Expressversand

### SZABO-SCANDIC HandelsgmbH

Quellenstraße 110, A-1100 Wien

T. +43(0)1 489 3961-0

F. +43(0)1 489 3961-7

[mail@szabo-scandic.com](mailto:mail@szabo-scandic.com)

[www.szabo-scandic.com](http://www.szabo-scandic.com)

[linkedin.com/company/szaboscandic](https://www.linkedin.com/company/szaboscandic) 



## UK Office

### Everest Biotech Ltd

Cherwell Innovation Centre  
77 Heyford Park  
Upper Heyford  
Oxfordshire  
OX25 5HD  
UK

Enquiries:

[info@everestbiotech.com](mailto:info@everestbiotech.com)

Sales:

[sales@everestbiotech.com](mailto:sales@everestbiotech.com)

Tech support:

[support@everestbiotech.com](mailto:support@everestbiotech.com)

Tel: +44 (0)1869 238326

Fax: +44 (0)1869 238327

## US Office

### Everest Biotech c/o Abcore

405 Maple Street, Suite A106  
Ramona,  
CA 92065  
USA

Inquiries:

[info@everestbiotech.com](mailto:info@everestbiotech.com)

Sales:

[usasales@everestbiotech.com](mailto:usasales@everestbiotech.com)

Tech support:

[support@everestbiotech.com](mailto:support@everestbiotech.com)

Tel: 888-320-4628 (toll-free)

Fax: 888-841-9041

[www.everestbiotech.com](http://www.everestbiotech.com)

**Research Use Only. Not for  
diagnostic or therapeutic use.**

## EB06353 - Goat Anti-BRG1 / SMARCA4 Antibody

Size: 100µg specific antibody in 200µl



### Target Protein

**Principal Names:** SMARCA4, BRG1, BAF190, SNF2L4, SNF2LB, hSNF2B, hSNF2b, SNF2-BETA, SWI/SNF related, matrix associated, actin dependent regulator of chromatin, subfamily a, member 4, SNF2-beta, SNF2-like 4, nuclear protein GRB1, brahma protein-like 1, BRM/SWI2-related gene 1, homeotic gene regulator, sucrose nonfermenting-like 4, mitotic growth and transcription activator, global transcription activator homologous sequence

**Official Symbol:** SMARCA4

**Accession Number(s):** NP\_001122321.1; NP\_003063.2; NP\_001122317.1; NP\_001122318.1; NP\_001122319.1; NP\_001122320.1

**Human GeneID(s):** [6597](#)

**Non-Human GeneID(s):** 20586 (mouse), 171379 (rat)

**Important Comments:** This antibody is expected to recognize all reported isoforms (NP\_001122321.1; NP\_003063.2; NP\_001122317.1; NP\_001122318.1; NP\_001122319.1; NP\_001122320.1). Reported variants NP\_003063.2 and NP\_001122316.1 represent identical protein.

### Immunogen

Peptide with sequence STDPDPLGGTPRP-C, from the N Terminus of the protein sequence according to NP\_001122321.1; NP\_003063.2; NP\_001122317.1; NP\_001122318.1; NP\_001122319.1; NP\_001122320.1.

Please note the [peptide](#) is available for sale.

### Purification and Storage

Purified from goat serum by ammonium sulphate precipitation followed by antigen affinity chromatography using the immunizing peptide.

Supplied at 0.5 mg/ml in Tris saline, 0.02% sodium azide, pH7.3 with 0.5% bovine serum albumin.

Aliquot and store at -20°C. Minimize freezing and thawing.

### Applications Tested

**Peptide ELISA:** antibody detection limit dilution 1:16000.

**IHC:** Paraffin embedded Human Small Intestine, Tonsil and Prostate. Recommended concentration: 3.75µg/ml.

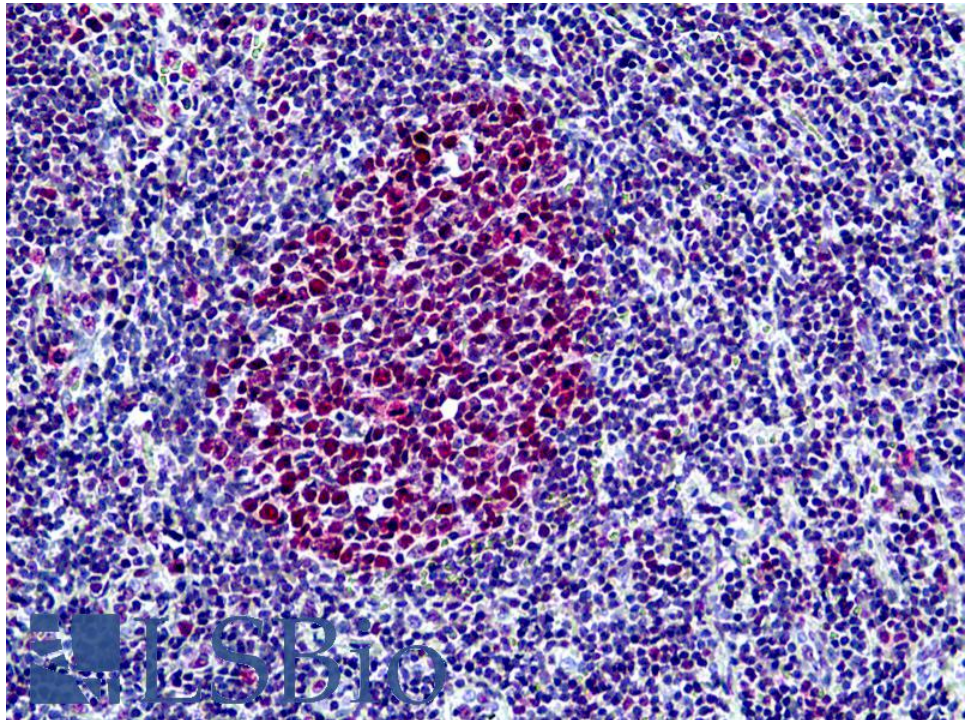
### Species Reactivity

**Tested:** Human

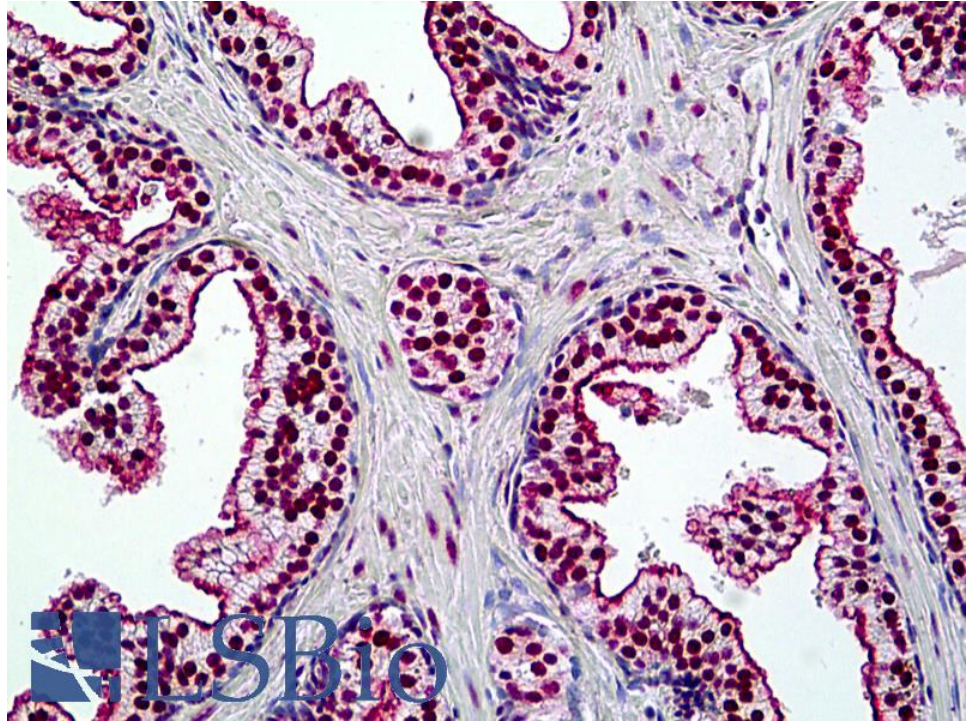
**Expected from sequence similarity:** Human, Mouse, Rat, Dog



EB06353 (3.75µg/ml) staining of paraffin embedded Human Small Intestine. Steamed antigen retrieval with citrate buffer pH 6, AP-staining.



EB06353 (3.75µg/ml) staining of paraffin embedded Human Tonsil. Steamed antigen retrieval with citrate buffer pH 6, AP-staining.



EB06353 (3.75µg/ml) staining of paraffin embedded Human Prostate. Steamed antigen retrieval with citrate buffer pH 6, AP-staining.