



SZABO SCANDIC

Part of Europa Biosite

Produktinformation



Forschungsprodukte & Biochemikalien



Zellkultur & Verbrauchsmaterial



Diagnostik & molekulare Diagnostik



Laborgeräte & Service

Weitere Information auf den folgenden Seiten!
See the following pages for more information!



Lieferung & Zahlungsart

siehe unsere [Liefer- und Versandbedingungen](#)

Zuschläge

- Mindermengenzuschlag
- Trockeneiszuschlag
- Gefahrgutzuschlag
- Expressversand

SZABO-SCANDIC HandelsgmbH

Quellenstraße 110, A-1100 Wien

T. +43(0)1 489 3961-0

F. +43(0)1 489 3961-7

mail@szabo-scandic.com

www.szabo-scandic.com

[linkedin.com/company/szaboscandic](https://www.linkedin.com/company/szaboscandic) 



UK Office

Everest Biotech Ltd

Cherwell Innovation Centre
77 Heyford Park
Upper Heyford
Oxfordshire
OX25 5HD
UK

Enquiries:

info@everestbiotech.com

Sales:

sales@everestbiotech.com

Tech support:

support@everestbiotech.com

Tel: +44 (0)1869 238326

Fax: +44 (0)1869 238327

US Office

Everest Biotech c/o Abcore

405 Maple Street, Suite A106
Ramona,
CA 92065
USA

Inquiries:

info@everestbiotech.com

Sales:

usasales@everestbiotech.com

Tech support:

support@everestbiotech.com

Tel: 888-320-4628 (toll-free)

Fax: 888-841-9041

www.everestbiotech.com

**Research Use Only. Not for
diagnostic or therapeutic use.**

EB06397 - Goat Anti-MSX1 Antibody

Size: 100µg specific antibody in 200µl



Target Protein

Principal Names: MSX1, HOX7, HYD1, msh homeo box homolog 1 (Drosophila), msh homeobox 1, STHAG1, homeobox 7, msh homeo box 1, msh homeobox homolog 1

Official Symbol: MSX1

Accession Number(s): NP_002439.2

Human GeneID(s): [4487](#)

Non-Human GeneID(s): 17701 (mouse)

Immunogen

Peptide with sequence TSLPLGVKVEDS-C, from the N Terminus of the protein sequence according to NP_002439.2.

Please note the [peptide](#) is available for sale.

Purification and Storage

Purified from goat serum by ammonium sulphate precipitation followed by antigen affinity chromatography using the immunizing peptide.

Supplied at 0.5 mg/ml in Tris saline, 0.02% sodium azide, pH7.3 with 0.5% bovine serum albumin.

Aliquot and store at -20°C. Minimize freezing and thawing.

Applications Tested

Peptide ELISA: antibody detection limit dilution 1:64000.

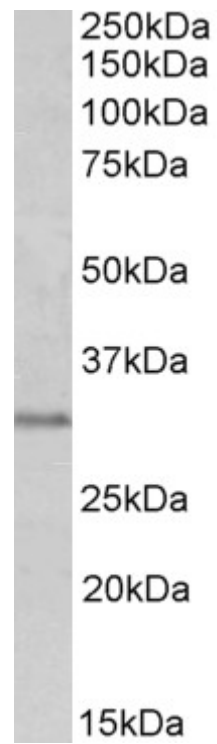
Western blot: Preliminary experiments gave an approx. 55-60kDa band in Human Muscle and Heart lysates at 1ug/ml. Further, this band was successfully blocked by incubation with the immunising peptide. Please note that currently we cannot find an explanation in the literature for the band we observe given the predicted size of approx. 31.4kDa according to Human NP_002439.2. We would appreciate any feedback from people in the field - have any results been reported with other antibodies/lysates? Have any further splice variants/modified forms been reported?

IHC: In paraffin embedded Human Prostate shows staining of nucleoli in a few epithelial cells. Recommended concentration, 2-4µg/ml. Data obtained from a previous batch (different goat).

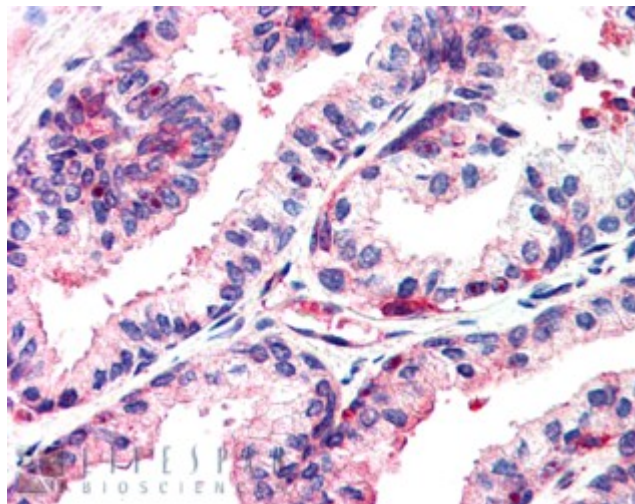
Species Reactivity

Tested: Human

Expected from sequence similarity: Human, Mouse, Rat, Pig, Cow



EB06397 (0.3 μ g/ml) staining of Human Prostate lysate (35 μ g protein in RIPA buffer). Primary incubation was 1 hour. Detected by chemiluminescence.



EB06397 (2.5 μ g/ml) staining of paraffin embedded Human Prostate. Steamed antigen retrieval with citrate buffer pH 6, AP-staining.