



SZABO SCANDIC

Part of Europa Biosite

Produktinformation



Forschungsprodukte & Biochemikalien



Zellkultur & Verbrauchsmaterial



Diagnostik & molekulare Diagnostik



Laborgeräte & Service

Weitere Information auf den folgenden Seiten!
See the following pages for more information!



Lieferung & Zahlungsart

siehe unsere [Liefer- und Versandbedingungen](#)

Zuschläge

- Mindermengenzuschlag
- Trockeneiszuschlag
- Gefahrgutzuschlag
- Expressversand

SZABO-SCANDIC HandelsgmbH

Quellenstraße 110, A-1100 Wien

T. +43(0)1 489 3961-0

F. +43(0)1 489 3961-7

mail@szabo-scandic.com

www.szabo-scandic.com

[linkedin.com/company/szaboscandic](https://www.linkedin.com/company/szaboscandic) 



UK Office

Everest Biotech Ltd

Cherwell Innovation Centre
77 Heyford Park
Upper Heyford
Oxfordshire
OX25 5HD
UK

Enquiries:

info@everestbiotech.com

Sales:

sales@everestbiotech.com

Tech support:

support@everestbiotech.com

Tel: +44 (0)1869 238326

Fax: +44 (0)1869 238327

US Office

Everest Biotech c/o Abcore

405 Maple Street, Suite A106
Ramona,
CA 92065
USA

Inquiries:

info@everestbiotech.com

Sales:

usasales@everestbiotech.com

Tech support:

support@everestbiotech.com

Tel: 888-320-4628 (toll-free)

Fax: 888-841-9041

www.everestbiotech.com

**Research Use Only. Not for
diagnostic or therapeutic use.**

EB06450 - Goat Anti-Smooth muscle alpha-actin Antibody

Size: 100µg specific antibody in 200µl



Target Protein

Principal Names: actin, alpha 2, smooth muscle, aorta, OTTHUMP00000020042, ACTA2, ACTSA, AAT6, ACTSA, alpha 2 actin, alpha-cardiac actin, growth-inhibiting gene 4, smooth muscle alpha-actin

Official Symbol: ACTA2

Accession Number(s): NP_001604.1; NP_001135417.1

Human GeneID(s): [59](#)

Important Comments: Variants NP_001604.1 and NP_001135417.1 encode the same protein.

Immunogen

Peptide with sequence EEEDSTALVC, from the N Terminus of the protein sequence according to NP_001604.1; NP_001135417.1.

Please note the [peptide](#) is available for sale.

Purification and Storage

Purified from goat serum by ammonium sulphate precipitation followed by antigen affinity chromatography using the immunizing peptide.

Supplied at 0.5 mg/ml in Tris saline, 0.02% sodium azide, pH7.3 with 0.5% bovine serum albumin.

Aliquot and store at -20°C. Minimize freezing and thawing.

Applications Tested

Peptide ELISA: antibody detection limit dilution 1:64000.

Western blot: Approx 40-45Da band observed in Rat Duodenum lysates, and in lysates of cell lines HeLa and NIH3T3, (calculated MW of 42kDa according to Human NP_001604, Mouse NP_031418.1 and Rat NP_112266.1). Recommended concentration: 0.1-1µg/ml. Primary incubation 1 hour at room temperature.

Species Reactivity

Tested: Human, Mouse, Rat

Expected from sequence similarity: Human, Mouse, Rat, Dog

Specific References

This antibody (previous batch) has been successfully used in IHC on Mouse:

Mathias Hochgerner, Eva M Sturm, Diana Schnoegl, Grazyna Kwapiszewska, Horst Olschewski, Leigh M Marsh

Low oxygen levels decrease adaptive immune responses and ameliorate experimental asthma in mice

Allergy. 2021 Jul 26. doi: 10.1111/all.15020

PMID: 34309864

This antibody (previous batch) has been successfully used in ICC on Human:

Nagy BM, Nagaraj C, Meinitzer A, Sharma N, Papp R, Foris V, Ghanim B, Kwapiszewska G, Kovacs G, Klepetko W, Pieber TR, Mangge H, Olschewski H, Olschewski A

Importance of kynurenine in pulmonary hypertension

Am J Physiol Lung Cell Mol Physiol. 2017 Nov 1;313(5):L741-L751.

PMID: 28705908

This antibody (previous batch) has been successfully used in IHC on Mouse:

João Paulo M. C. M. Cunha, Gunter Leuckx, Peter Sterkendries, Hannelie Korf, Gabriela Bomfim-Ferreira, Lutgart Overbergh, Bart Vaes, Harry Heimberg, Conny Gysemans, Chantal Mathieu

Human multipotent adult progenitor cells enhance islet function and revascularisation when co-transplanted into a composite pellet in a mouse model of diabetes.

Diabetologia. 2016 Oct 4.

PMID: 27704164

This antibody (previous batch) has been successfully used in WB and IF on Mouse:

Chaofei Li, Tianyi Yu, Yan Liu, Xuelian Chen, and Xiong Zhang.

Topical Application of Insulin Accelerates Vessel Maturation of Wounds by Regulating Angiopoietin-1 in Diabetic Mice.

Int J Low Extrem Wounds. 2015 Dec;14(4):353-64.

PMID: 26349856

This antibody (previous batch) has been successfully used in IHC on Human:

Zabini D, Crnkovic S, Xu H, Tscherner M, Ghanim B, Klepetko W, Olschewski A, Kwapiszewska G, Marsh LM.

High-mobility group box-1 induces vascular remodelling processes via c-Jun activation.

J Cell Mol Med. 2015 May;19(5):1151-61

PMID: 25726846

This antibody (previous batch) has been successfully used in IHC on Human:

Diana Zabini, Akos Heinemann, Vasile Foris, Chandran Nagaraj, Patrick Nierlich, Zoltán Balint, Grazyna Kwapiszewska, Irene M. Lang, Walter Klepetko, Horst Olschewski and Andrea Olschewski.

Comprehensive analysis of inflammatory markers in chronic thromboembolic pulmonary hypertension patients.

Eur Respir J. 2014 Oct;44(4):951-62.

PMID: 25034560

This antibody (previous batch) has been successfully used in IHC on Mouse:

Park SH, Chen WC, Hoffman C, Marsh LM, West J, Grunig G.

Modification of hemodynamic and immune responses to exposure with a weak antigen by the expression of a hypomorphic BMPR2 gene.

PLoS One. 2013;8(1):e55180.

PMID: 23383100

This antibody (previous batch) has been successfully used in IHC on Mouse:

Trokovic N, Pöllänen R, Porola P, Stegaev V, Hetzel U, Tivesten Å, Engdahl C, Carlsten H, Forsblad-d'Elia H, Fagman JB, Lagerquist M, Kontinen YT.

Exosomal secretion of death bullets: a new way of apoptotic escape?

Am J Physiol Endocrinol Metab. 2012 Oct 15;303(8):E1015-24.

PMID: 22912365

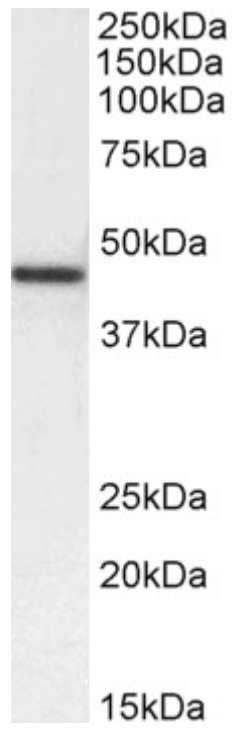
This antibody (previous batch) has been successfully used in IF on Human:

McIntire RH, Sifers T, Platt JS, Ganacias KG, Langat DK, Hunt JS.

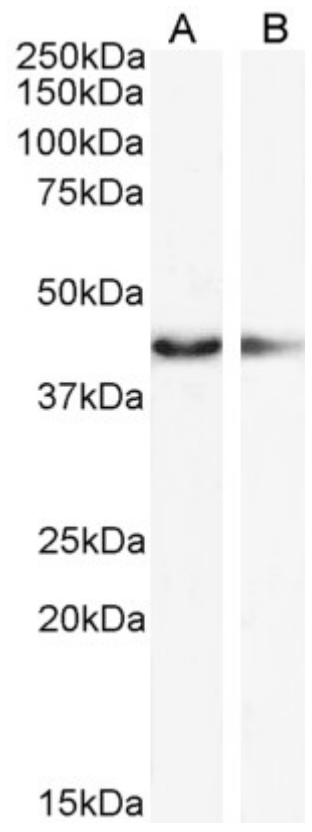
Novel HLA-G-binding leukocyte immunoglobulin-like receptor (LILR) expression patterns in human placentas and umbilical cords.

Placenta. 2008 Jul;29(7):631-8.

PMID: 18538388



EB06450 (1µg/ml) staining of Rat Duodenum lysate (35µg protein in RIPA buffer). Detected by chemiluminescence.



EB06450 (0.5µg/ml) staining of HeLa (A) and (1µg/ml) NIH3T3 (B) cell lysate (35µg protein in RIPA buffer). Detected by chemiluminescence.