



# SZABO SCANDIC

Part of Europa Biosite

## Produktinformation



Forschungsprodukte & Biochemikalien



Zellkultur & Verbrauchsmaterial



Diagnostik & molekulare Diagnostik



Laborgeräte & Service

Weitere Information auf den folgenden Seiten!  
See the following pages for more information!



### Lieferung & Zahlungsart

siehe unsere [Liefer- und Versandbedingungen](#)

### Zuschläge

- Mindermengenzuschlag
- Trockeneiszuschlag
- Gefahrgutzuschlag
- Expressversand

### SZABO-SCANDIC HandelsgmbH

Quellenstraße 110, A-1100 Wien

T. +43(0)1 489 3961-0

F. +43(0)1 489 3961-7

[mail@szabo-scandic.com](mailto:mail@szabo-scandic.com)

[www.szabo-scandic.com](http://www.szabo-scandic.com)

[linkedin.com/company/szaboscandic](https://www.linkedin.com/company/szaboscandic) 



## UK Office

### Everest Biotech Ltd

Cherwell Innovation Centre  
77 Heyford Park  
Upper Heyford  
Oxfordshire  
OX25 5HD  
UK

Enquiries:

[info@everestbiotech.com](mailto:info@everestbiotech.com)

Sales:

[sales@everestbiotech.com](mailto:sales@everestbiotech.com)

Tech support:

[support@everestbiotech.com](mailto:support@everestbiotech.com)

Tel: +44 (0)1869 238326

Fax: +44 (0)1869 238327

## US Office

### Everest Biotech c/o Abcore

405 Maple Street, Suite A106  
Ramona,  
CA 92065  
USA

Inquiries:

[info@everestbiotech.com](mailto:info@everestbiotech.com)

Sales:

[usasales@everestbiotech.com](mailto:usasales@everestbiotech.com)

Tech support:

[support@everestbiotech.com](mailto:support@everestbiotech.com)

Tel: 888-320-4628 (toll-free)

Fax: 888-841-9041

[www.everestbiotech.com](http://www.everestbiotech.com)

**Research Use Only. Not for  
diagnostic or therapeutic use.**

## EB06456 - Goat Anti-PRL1 / PTP4A1 Antibody

Size: 100µg specific antibody in 200µl



### Target Protein

**Principal Names:** PTP4A1, HH72, PRL1, PRL-1, PTPCAAX1, PTP(CAAX1), protein tyrosine phosphatase type IVA, member 1, Protein tyrosine phosphatase IVA1, RP5-1148A21.2, DKFZp779M0721, protein tyrosine phosphatase type IVA protein 1

**Official Symbol:** PTP4A1

**Accession Number(s):** NP\_003454.1

**Human GeneID(s):** [7803](#)

### Immunogen

Peptide with sequence CFKDSNGHRNN, from the C Terminus of the protein sequence according to NP\_003454.1.

Please note the [peptide](#) is available for sale.

### Purification and Storage

Purified from goat serum by ammonium sulphate precipitation followed by antigen affinity chromatography using the immunizing peptide.

Supplied at 0.5 mg/ml in Tris saline, 0.02% sodium azide, pH7.3 with 0.5% bovine serum albumin.

Aliquot and store at -20°C. Minimize freezing and thawing.

### Applications Tested

**Peptide ELISA:** antibody detection limit dilution 1:64000.

**Western blot:** This antibody has been successfully used in Western Blot as described in the following papers, PMID: 18997816 and PMID: 36793871.

**Immunofluorescence:** Strong expression of the protein seen in HeLa and NIH3T3 cells. Recommended concentration: 10µg/ml.

**Additional validation:** This antibody has been successfully used in the following paper: Achiwa H et al. (2007) PMID: 17234774.

### Species Reactivity

**Tested:** Human, Mouse

**Expected from sequence similarity:** Human, Mouse, Rat, Dog

### Specific References

**This antibody has been successfully used in WB on Mouse:**

Byungtae Hwang, Min-Gi Kwon, Min Ji Cho, Nam-Kyung Lee, Jangwook Lee, Jeong Woong Lee, Kyoung-Jin Oh, Kwang-Hee Bae, Jung Hwan Hwang, Jeong-Ki Min, Jong-Gil Park

Hepatic PTP4A1 ameliorates high-fat diet-induced hepatosteatosis and hyperglycemia by the activation of the CREBH/FGF21 axis.

Theranostics. 2023 Jan 22;13(3):1076-1090.

PMID: 36793871

**This antibody has been successfully used in WB on Human:**

Min SH, Kim DM, Heo YS, Kim YI, Kim HM, Kim J, Han YM, Kim IC, Yoo OJ.

New p53 target, phosphatase of regenerating liver 1 (PRL-1) downregulates p53.

Oncogene. 2009 Jan 29;28(4):545-54.

PMID: 18997816

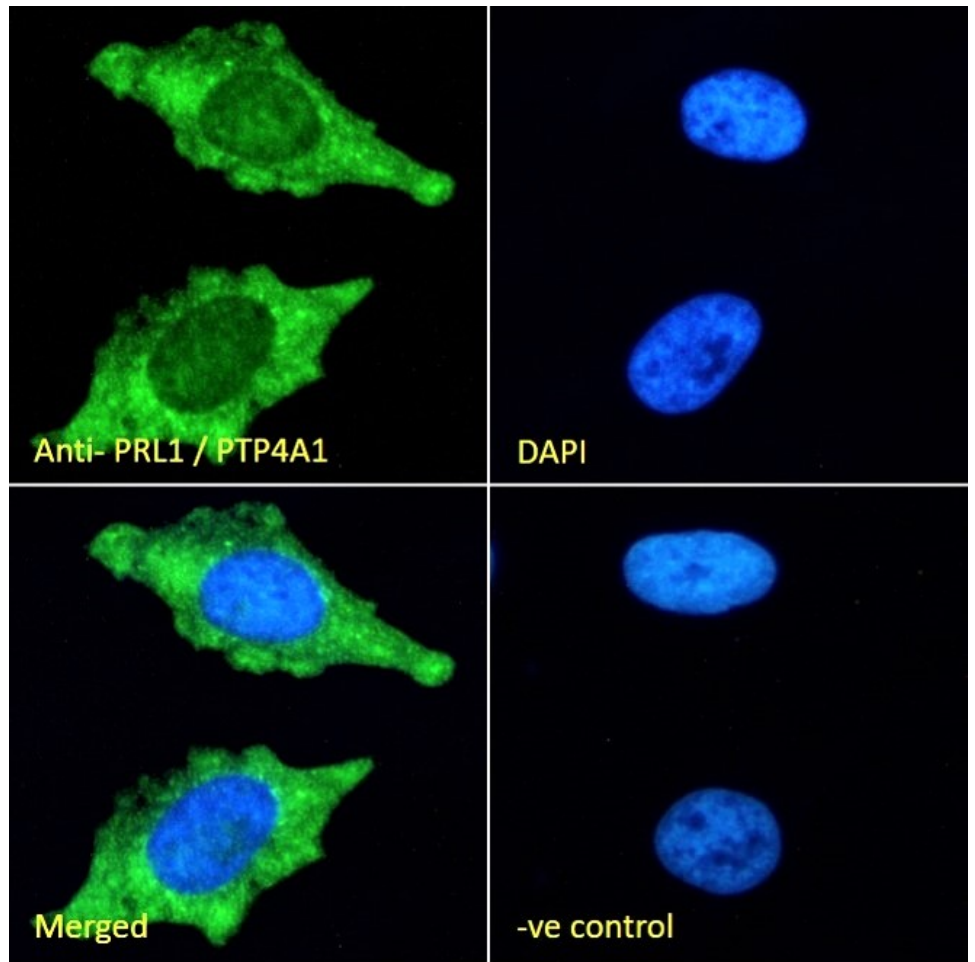
**This antibody has been successfully used in the following paper:**

Achiwa H, Lazo JS.

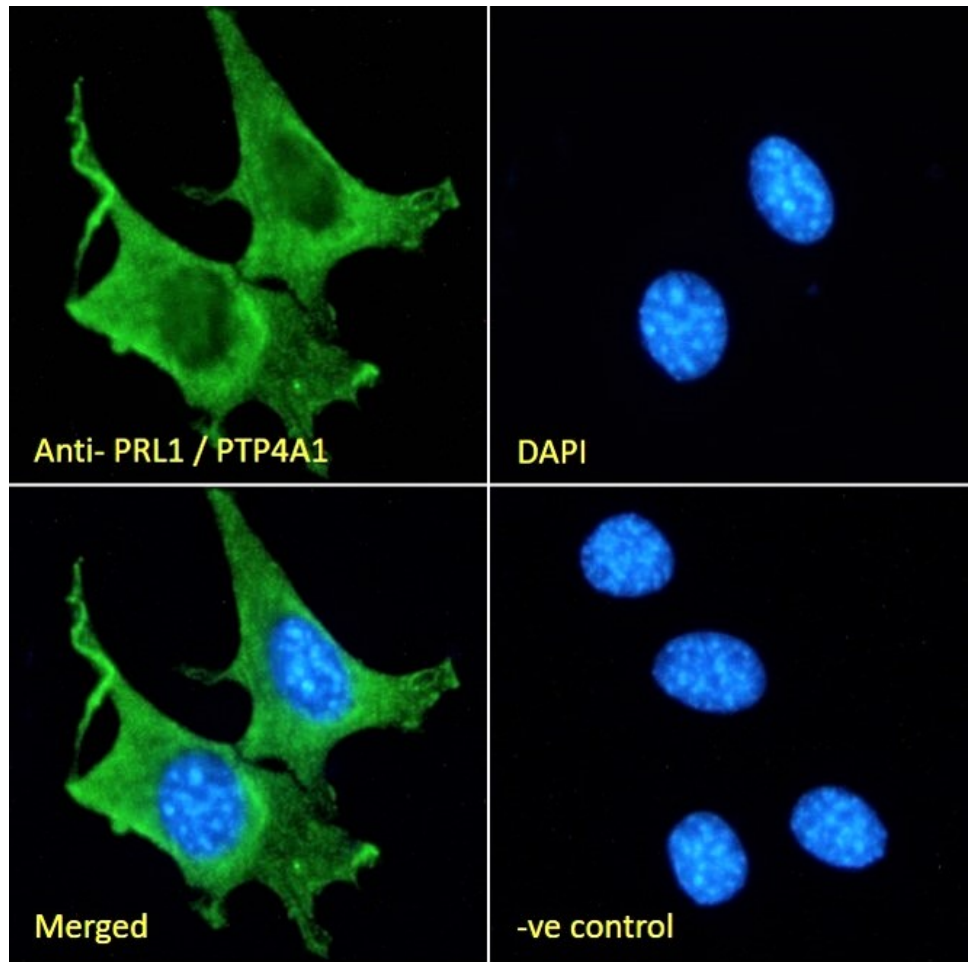
PRL-1 tyrosine phosphatase regulates c-Src levels, adherence, and invasion in human lung cancer cells.

Cancer Res. 2007 Jan 15;67(2):643-50.

PMID: 17234774



EB06456 Immunofluorescence analysis of paraformaldehyde fixed HeLa cells, permeabilized with 0.15% Triton. Primary incubation 1hr (10ug/ml) followed by Alexa Fluor 488 secondary antibody (2ug/ml), showing cytoplasmic staining. The nuclear stain is DAPI (blue). Negative control: Unimmunized goat IgG (10ug/ml) followed by Alexa Fluor 488 secondary antibody (2ug/ml).



EB06456 Immunofluorescence analysis of paraformaldehyde fixed NIH3T3 cells, permeabilized with 0.15% Triton. Primary incubation 1hr (10ug/ml) followed by Alexa Fluor 488 secondary antibody (2ug/ml), showing membrane and cytoplasmic staining. The nuclear stain is DAPI (blue). Negative control: Unimmunized goat IgG (10ug/ml) followed by Alexa Fluor 488 secondary antibody (2ug/ml).