



SZABO SCANDIC

Part of Europa Biosite

Produktinformation



Forschungsprodukte & Biochemikalien



Zellkultur & Verbrauchsmaterial



Diagnostik & molekulare Diagnostik



Laborgeräte & Service

Weitere Information auf den folgenden Seiten!
See the following pages for more information!



Lieferung & Zahlungsart

siehe unsere [Liefer- und Versandbedingungen](#)

Zuschläge

- Mindermengenzuschlag
- Trockeneiszuschlag
- Gefahrgutzuschlag
- Expressversand

SZABO-SCANDIC HandelsgmbH

Quellenstraße 110, A-1100 Wien

T. +43(0)1 489 3961-0

F. +43(0)1 489 3961-7

mail@szabo-scandic.com

www.szabo-scandic.com

[linkedin.com/company/szaboscandic](https://www.linkedin.com/company/szaboscandic) 



UK Office

Everest Biotech Ltd

Cherwell Innovation Centre
77 Heyford Park
Upper Heyford
Oxfordshire
OX25 5HD
UK

Enquiries:

info@everestbiotech.com

Sales:

sales@everestbiotech.com

Tech support:

support@everestbiotech.com

Tel: +44 (0)1869 238326

Fax: +44 (0)1869 238327

US Office

Everest Biotech c/o Abcore

405 Maple Street, Suite A106
Ramona,
CA 92065
USA

Inquiries:

info@everestbiotech.com

Sales:

usasales@everestbiotech.com

Tech support:

support@everestbiotech.com

Tel: 888-320-4628 (toll-free)

Fax: 888-841-9041

www.everestbiotech.com

**Research Use Only. Not for
diagnostic or therapeutic use.**

EB06552 - Goat Anti-Swiprosin 1 / EFHD2 Antibody

Size: 100µg specific antibody in 200µl



Target Protein

Principal Names: EFHD2, MGC4342, EF hand domain containing 2

Official Symbol: EFHD2

Accession Number(s): NP_077305.2

Human GeneID(s): [79180](#)

Non-Human GeneID(s): 27984 (mouse)

Important Comments: This antibody does not cross-react with Mouse Swiprosin 2. Data kindly provided by Sebastian Duetting and Dirk Mielenz.

Immunogen

Peptide with sequence CAAFKELQSTFK, from the C Terminus of the protein sequence according to NP_077305.2.

Please note the [peptide](#) is available for sale.

Purification and Storage

Purified from goat serum by ammonium sulphate precipitation followed by antigen affinity chromatography using the immunizing peptide.

Supplied at 0.5 mg/ml in Tris saline, 0.02% sodium azide, pH7.3 with 0.5% bovine serum albumin.

Aliquot and store at -20°C. Minimize freezing and thawing.

Applications Tested

Peptide ELISA: antibody detection limit dilution 1:128000.

Western blot: Approx 30kDa band observed in Human Thymus, Human Lymph node and Human Tonsil lysates (calculated MW of 26.7kDa according to NP_077305.2).

Recommended concentration: 0.5-1.5µg/ml. Primary incubation was 1 hour.

Species Reactivity

Tested: Human

Expected from sequence similarity: Human, Mouse, Rat, Dog, Cow

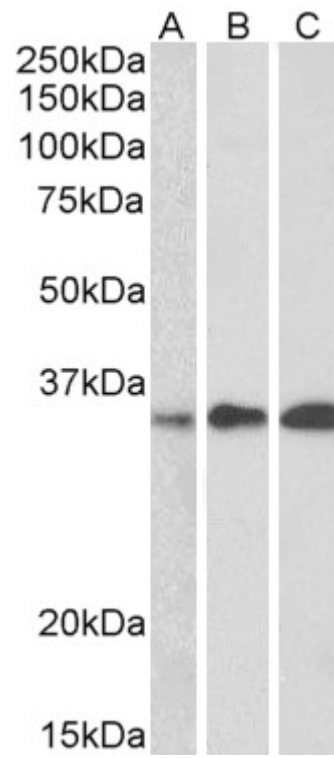
Specific Reference

This antibody (previous batch) has been successfully used in Western blot on Human:

Brachs S, Lang C, Buslei R, Purohit P, Fürnrohr B, Kalbacher H, Jäck HM, Mielenz D. Monoclonal antibodies to discriminate the EF hand containing calcium binding adaptor proteins EFhd1 and EFhd2.

Monoclon Antib Immunodiagn Immunother. 2013 Aug;32(4):237-45.

PMID: 23909416



EB06552 (0.5µg/ml) staining of Human Thymus, Human Lymph node and Human Tonsil lysate (35µg protein in RIPA buffer). Detected by chemiluminescence.