



# SZABO SCANDIC

Part of Europa Biosite

## Produktinformation



Forschungsprodukte & Biochemikalien



Zellkultur & Verbrauchsmaterial



Diagnostik & molekulare Diagnostik



Laborgeräte & Service

Weitere Information auf den folgenden Seiten!  
See the following pages for more information!



### Lieferung & Zahlungsart

siehe unsere [Liefer- und Versandbedingungen](#)

### Zuschläge

- Mindermengenzuschlag
- Trockeneiszuschlag
- Gefahrgutzuschlag
- Expressversand

### SZABO-SCANDIC HandelsgmbH

Quellenstraße 110, A-1100 Wien

T. +43(0)1 489 3961-0

F. +43(0)1 489 3961-7

[mail@szabo-scandic.com](mailto:mail@szabo-scandic.com)

[www.szabo-scandic.com](http://www.szabo-scandic.com)

[linkedin.com/company/szaboscandic](https://www.linkedin.com/company/szaboscandic) 



## UK Office

### Everest Biotech Ltd

Cherwell Innovation Centre  
77 Heyford Park  
Upper Heyford  
Oxfordshire  
OX25 5HD  
UK

Enquiries:

[info@everestbiotech.com](mailto:info@everestbiotech.com)

Sales:

[sales@everestbiotech.com](mailto:sales@everestbiotech.com)

Tech support:

[support@everestbiotech.com](mailto:support@everestbiotech.com)

Tel: +44 (0)1869 238326

Fax: +44 (0)1869 238327

## US Office

### Everest Biotech c/o Abcore

405 Maple Street, Suite A106  
Ramona,  
CA 92065  
USA

Inquiries:

[info@everestbiotech.com](mailto:info@everestbiotech.com)

Sales:

[usasales@everestbiotech.com](mailto:usasales@everestbiotech.com)

Tech support:

[support@everestbiotech.com](mailto:support@everestbiotech.com)

Tel: 888-320-4628 (toll-free)

Fax: 888-841-9041

[www.everestbiotech.com](http://www.everestbiotech.com)

**Research Use Only. Not for  
diagnostic or therapeutic use.**

## EB06558 - Goat Anti-VMAT2 / SLC18A2 Antibody

Size: 100µg specific antibody in 200µl



### Target Protein

**Principal Names:** VMAT2, SLC18A2, SVAT, SVMT, VAT2, solute carrier family 18 (vesicular monoamine), member 2

**Official Symbol:** SLC18A2

**Accession Number(s):** NP\_003045.2

**Human GeneID(s):** [6571](#)

**Non-Human GeneID(s):** 214084 (mouse), 25549 (rat)

### Immunogen

Peptide with sequence C-SYPIGEDEEESD, from the C Terminus of the protein sequence according to NP\_003045.2.

Please note the [peptide](#) is available for sale.

### Purification and Storage

Purified from goat serum by ammonium sulphate precipitation followed by antigen affinity chromatography using the immunizing peptide.

Supplied at 0.5 mg/ml in Tris saline, 0.02% sodium azide, pH7.3 with 0.5% bovine serum albumin.

Aliquot and store at -20°C. Minimize freezing and thawing.

### Applications Tested

**Peptide ELISA:** antibody detection limit dilution 1:8000.

**Western blot:** Approx 55kDa band observed in Human Adrenal Gland lysates (calculated MW of 55.7kDa according to NP\_003045.2). Recommended concentration 1-3µg/ml. Primary incubation 1 hour at room temperature.

**IHC:** Paraffin embedded Human Adrenal Gland. Recommended concentration: 5-6µg/ml.

### Species Reactivity

**Tested:** Human

**Expected from sequence similarity:** Human, Mouse, Rat, Dog, Pig, Cow

### Specific References

**This antibody (previous batch) has been successfully used in the following paper:**

Feipeng Zhu, Lina Liu, Jie Li, Bing Liu, Qinglong Wang, Ruiying Jiao, Yongxin Xu, Lun Wang, Suhua Sun, Xiaoxuan Sun, Muhammad Younus, Changhe Wang, Tomas Hökfelt, Bo Zhang, Howard Gu, Zhi-Qing David Xu, Zhuan Zhou

Cocaine increases quantal norepinephrine secretion through NET-dependent PKC activation in locus coeruleus neurons.

Cell Rep. 2022 Aug 16;40(7):111199.

PMID: 35977516

**This antibody (previous batch) has been successfully used in IHC on Rat:**

Majken B Thomsen, Sara A Ferreira, Anna C Schacht, Jan Jacobsen, Mette Simonsen, Cristine Betzer, Poul H Jensen, David J Brooks, Anne M Landau, Marina Romero-Ramos

PET imaging reveals early and progressive dopaminergic deficits after intra-striatal injection of preformed alpha-synuclein fibrils in rats

Neurobiol Dis. 2021 Feb;149:105229.

PMID: 33352233

**This antibody (previous batch) has been successfully used in WB on Rat:**

Anupam Raina, Kristian Leite, Sofia Guerin, Sameehan U Mahajani, Kalyan S Chakrabarti, Diana Voll, Stefan Becker, Christian Griesinger, Mathias Bähr, Sebastian Kügler

Dopamine promotes the neurodegenerative potential of  $\beta$ -synuclein.

J Neurochem. 2021 Mar;156(5):674-691.

PMID: 32730640

**This antibody (previous batch) has been successfully used in IF on Mouse:**

Haibo Zhou et al.

Glia-to-Neuron Conversion by CRISPR-CasRx Alleviates Symptoms of Neurological Disease in Mice.

Cell. 2020 Apr 30;181(3):590-603.e16.

PMID: 32272060

**This antibody (previous batch) has been successfully used in IF on Rat:**

Kato K, Yokoyama T, Kusakabe T, Hata K, Fushuku S, Nakamuta N, Yamamoto Y  
Differences in the expression of catecholamine-synthesizing enzymes between vesicular monoamine transporter 1- and 2-immunoreactive glomus cells in the rat carotid body  
Acta Histochem. 2020 Jan 16:151507.

PMID: 31955909

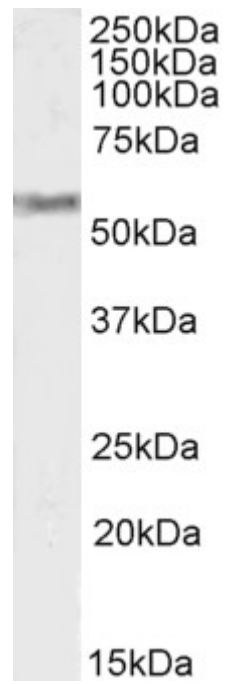
**This antibody (previous batch) has been successfully used in Western blot on Rat:**

Shiliang Zhang, Jia Qi, Xueping Li, Hui-Ling Wang, Jonathan P. Britt, Alexander F. Hoffman, Antonello Bonci, Carl R. Lupica, and Marisela Morales.

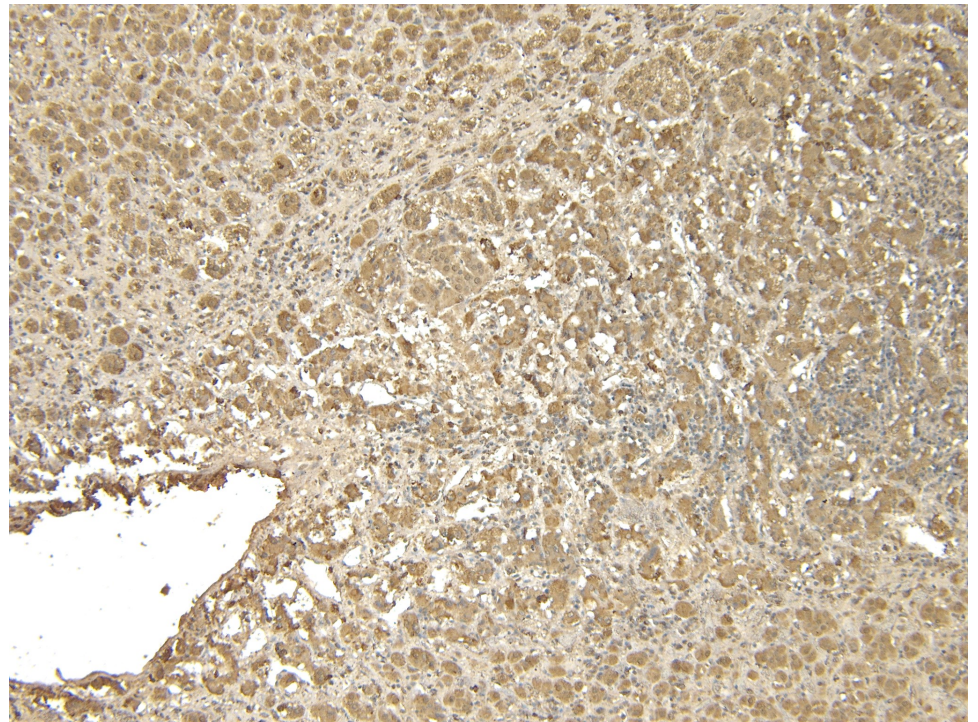
Dopaminergic and glutamatergic microdomains within a subset of rodent mesoaccumbens axons.

Nat Neurosci. 2015 March;18(3):386–392.

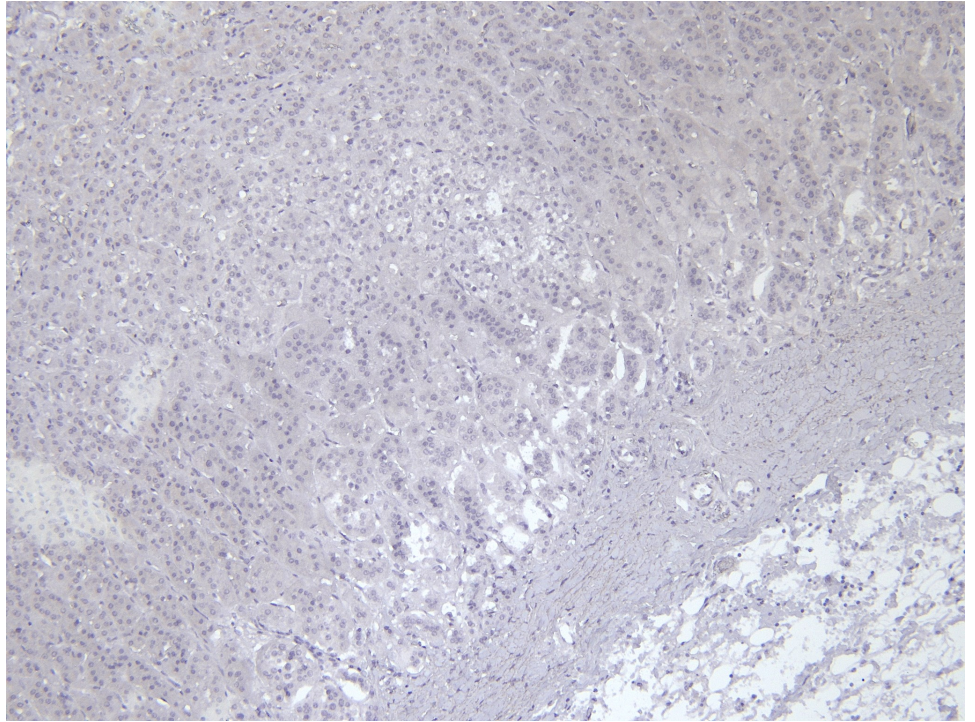
PMID: 25664911



EB06558 (2 $\mu$ g/ml) staining of Human Adrenal Gland lysate (35 $\mu$ g protein in RIPA buffer). Detected by chemiluminescence.



EB06558 (6 $\mu$ g/ml) staining of paraffin embedded Human Adrenal Gland. Heat induced antigen retrieval with citrate buffer pH 6, HRP-staining.



EB06558 Negative Control showing staining of paraffin embedded Human Adrenal Gland, with no primary antibody.