



SZABO SCANDIC

Part of Europa Biosite

Produktinformation



Forschungsprodukte & Biochemikalien



Zellkultur & Verbrauchsmaterial



Diagnostik & molekulare Diagnostik



Laborgeräte & Service

Weitere Information auf den folgenden Seiten!
See the following pages for more information!



Lieferung & Zahlungsart

siehe unsere [Liefer- und Versandbedingungen](#)

Zuschläge

- Mindermengenzuschlag
- Trockeneiszuschlag
- Gefahrgutzuschlag
- Expressversand

SZABO-SCANDIC HandelsgmbH

Quellenstraße 110, A-1100 Wien

T. +43(0)1 489 3961-0

F. +43(0)1 489 3961-7

mail@szabo-scandic.com

www.szabo-scandic.com

[linkedin.com/company/szaboscandic](https://www.linkedin.com/company/szaboscandic)



UK Office

Everest Biotech Ltd

Cherwell Innovation Centre
77 Heyford Park
Upper Heyford
Oxfordshire
OX25 5HD
UK

Enquiries:

info@everestbiotech.com

Sales:

sales@everestbiotech.com

Tech support:

support@everestbiotech.com

Tel: +44 (0)1869 238326

Fax: +44 (0)1869 238327

US Office

Everest Biotech c/o Abcore

405 Maple Street, Suite A106
Ramona,
CA 92065
USA

Inquiries:

info@everestbiotech.com

Sales:

usasales@everestbiotech.com

Tech support:

support@everestbiotech.com

Tel: 888-320-4628 (toll-free)

Fax: 888-841-9041

www.everestbiotech.com

**Research Use Only. Not for
diagnostic or therapeutic use.**

EB06643 - Goat Anti-Triosephosphate isomerase Antibody

Size: 100µg specific antibody in 200µl



Target Protein

Principal Names: triosephosphate isomerase 1, TPI1, TPI, MGC88108, epididymis secretory protein Li 49, HEL-S-49, TIM, TPID, triose-phosphate isomerase

Official Symbol: TPI1

Accession Number(s): NP_000356.1; NP_001152759.1; NP_001244955.1

Human GeneID(s): [7167](#)

Non-Human GeneID(s): 21991 (mouse), 24849 (rat)

Important Comments: This antibody is expected to recognise reported isoforms 1, 2 and 3 (NP_000356.1; NP_001152759.1, NP_001244955.1.

Immunogen

Peptide with sequence C-LKPEFVDIINAKQ, from the C Terminus of the protein sequence according to NP_000356.1; NP_001152759.1; NP_001244955.1.

Please note the [peptide](#) is available for sale.

Purification and Storage

Purified from goat serum by ammonium sulphate precipitation followed by antigen affinity chromatography using the immunizing peptide.

Supplied at 0.5 mg/ml in Tris saline, 0.02% sodium azide, pH7.3 with 0.5% bovine serum albumin.

Aliquot and store at -20°C. Minimize freezing and thawing.

Applications Tested

Peptide ELISA: antibody detection limit dilution 1:16000.

Western blot: Approx 26kDa band observed in lysates of cell lines HEK293, HeLa, HepG2, Jurkat, Raw264.7. KNRK and MDCK (calculated MW of 26.7kDa according to Human NP_000356.1). Recommended concentration: 0.001-0.01µg/ml. Primary incubation 1 hour at room temperature. This antibody has been successfully used in WB on Mouse in PMID: 18544163. This antibody has been successfully used in WB on Human in PMID: 17326818.

IHC: In paraffin embedded Human Liver shows staining of the sinusoids. Recommended concentration: 2-4µg/ml. Paraffin embedded Human Pancreas. Recommended concentration: 5µg/ml.

Flow Cytometry: Flow cytometric analysis of HepG2 cells. Recommended concentration: 10ug/ml.

Species Reactivity

Tested: Human, Mouse, Rat, Dog

Expected from sequence similarity: Human, Mouse, Rat, Dog, Cow

Specific References

This antibody has been successfully used in Western blot on Mouse:

Honoré B, Buus S, Claesson MH.

Identification of differentially expressed proteins in spontaneous thymic lymphomas from knockout mice with deletion of p53.

Proteome Sci. 2008 Jun 10;6:18.

PMID: 18544163

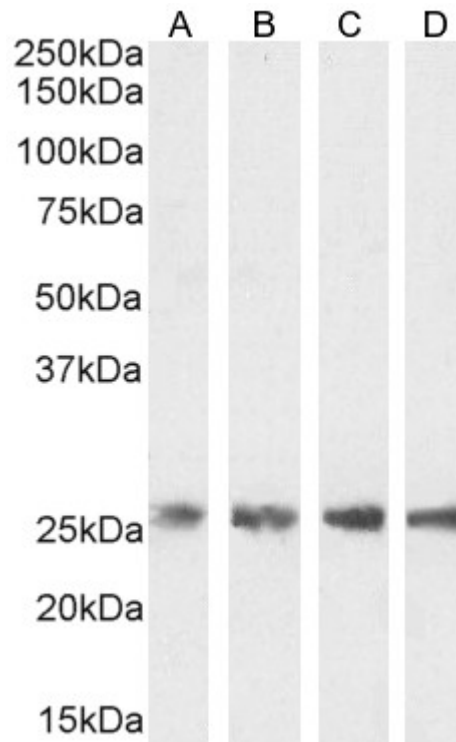
This antibody has been successfully used in Western blot on Human:

Vorum H, Østergaard M, Rice GE, Honoré B, Bek T.

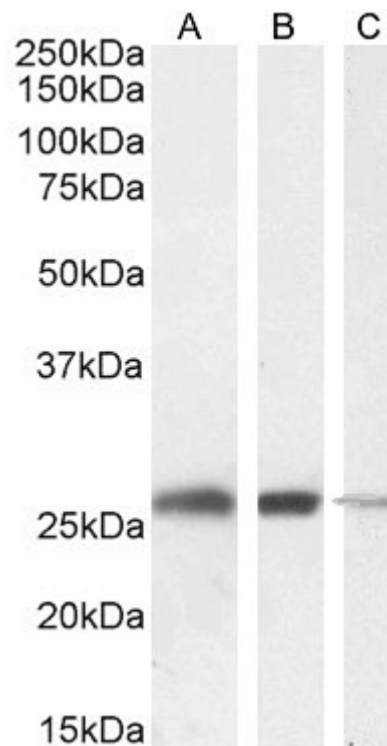
Identification of differentially regulated proteins in a patient with Leber's Congenital Amaurosis--a proteomic study.

Proteome Sci. 2007 Feb 27;5:5.

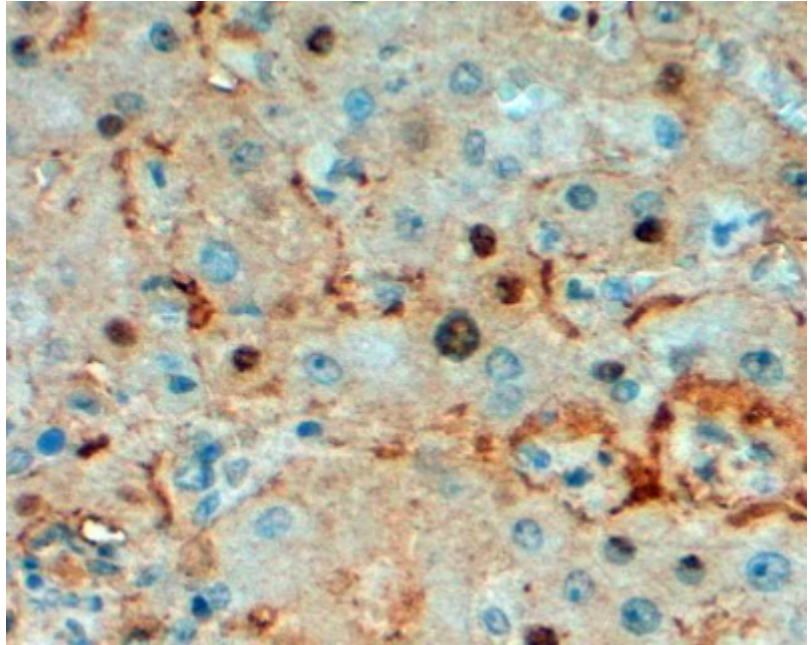
PMID: 17326818



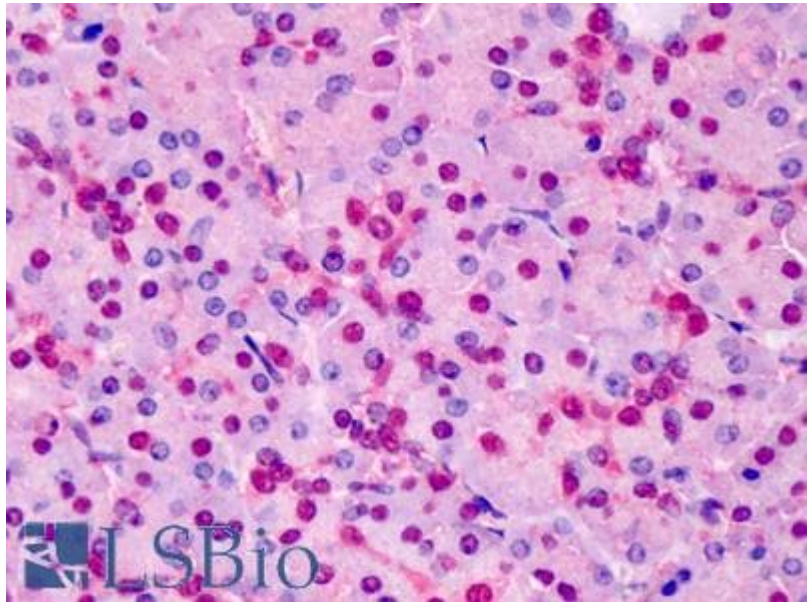
EB06643 (0.001 μ g/ml) staining of HepG2 (A), HEK293 (B), HeLa (C) and Jurkat (D) cell lysate (35 μ g protein in RIPA buffer). Detected by chemiluminescence.



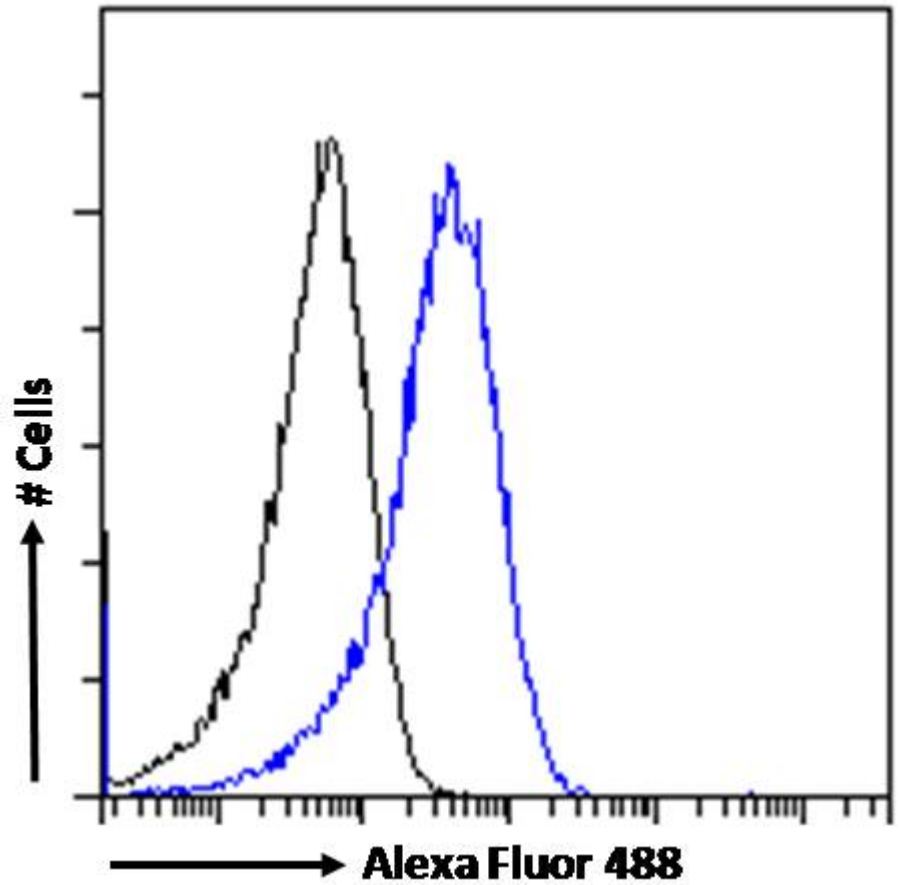
EB06643 (0.001 μ g/ml) staining of RAW264.7 (A), KNRK (B) and MDCK (C) cell lysate (35 μ g protein in RIPA buffer). Detected by chemiluminescence.



EB06643 (2µg/ml) staining of paraffin embedded Human Liver. Steamed antigen retrieval with Tris/EDTA buffer pH 9, HRP-staining.



EB06643 (5µg/ml) staining of paraffin embedded Human Pancreas. Steamed antigen retrieval with Tris/EDTA buffer pH 9, AP-staining.



EB06643 Flow cytometric analysis of paraformaldehyde fixed HeLa cells (blue line), permeabilized with 0.5% Triton. Primary incubation 1hr (10ug/ml) followed by Alexa Fluor 488 secondary antibody (1ug/ml). IgG control: Unimmunized goat IgG (black line) followed by Alexa Fluor 488 secondary antibody.