



SZABO SCANDIC

Part of Europa Biosite

Produktinformation



Forschungsprodukte & Biochemikalien



Zellkultur & Verbrauchsmaterial



Diagnostik & molekulare Diagnostik



Laborgeräte & Service

Weitere Information auf den folgenden Seiten!
See the following pages for more information!



Lieferung & Zahlungsart

siehe unsere [Liefer- und Versandbedingungen](#)

Zuschläge

- Mindermengenzuschlag
- Trockeneiszuschlag
- Gefahrgutzuschlag
- Expressversand

SZABO-SCANDIC HandelsgmbH

Quellenstraße 110, A-1100 Wien

T. +43(0)1 489 3961-0

F. +43(0)1 489 3961-7

mail@szabo-scandic.com

www.szabo-scandic.com

[linkedin.com/company/szaboscandic](https://www.linkedin.com/company/szaboscandic) 



UK Office

Everest Biotech Ltd

Cherwell Innovation Centre
77 Heyford Park
Upper Heyford
Oxfordshire
OX25 5HD
UK

Enquiries:

info@everestbiotech.com

Sales:

sales@everestbiotech.com

Tech support:

support@everestbiotech.com

Tel: +44 (0)1869 238326

Fax: +44 (0)1869 238327

US Office

Everest Biotech c/o Abcore

405 Maple Street, Suite A106
Ramona,
CA 92065
USA

Inquiries:

info@everestbiotech.com

Sales:

usasales@everestbiotech.com

Tech support:

support@everestbiotech.com

Tel: 888-320-4628 (toll-free)

Fax: 888-841-9041

www.everestbiotech.com

**Research Use Only. Not for
diagnostic or therapeutic use.**

EB06649 - Goat Anti-FGFR1 Antibody

Size: 100µg specific antibody in 200µl



Target Protein

Principal Names: FGFR1, H2, H3, H4, H5, CEK, FLG, FLT2, KAL2, BFGFR, C-FGR, N-SAM, fibroblast growth factor receptor 1 (fms-related tyrosine kinase 2, Pfeiffer syndrome), FLG protein, N-sam tyrosine kinase, tyrosylprotein kinase, protein-tyrosine kinase, FMS-like tyrosine kinase 2, hydroxyaryl-protein kinase, fms-related tyrosine kinase-2, heparin-binding growth factor receptor, basic fibroblast growth factor receptor 1, fibroblast growth factor receptor 1, CD331, FGFR, FLJ99988, HBGFR, OGD, OTTHUMP00000190881, soluble FGFR1, soluble FGFR1 variant 2

Official Symbol: FGFR1

Accession Number(s): NP_075598.2; NP_056934.2; NP_075593.1; NP_075594.1; NP_075599.1

Human GenelD(s): [2260](#)

Important Comments: This antibody is expected to recognise five isoforms (as represented by NP_075598.2; NP_056934.2; NP_075593.1; NP_075594.1; NP_075599.1).

Immunogen

Peptide with sequence CLPRHPAQLANGGLKR, from the C Terminus of the protein sequence according to NP_075598.2; NP_056934.2; NP_075593.1; NP_075594.1; NP_075599.1.

Please note the [peptide](#) is available for sale.

Purification and Storage

Purified from goat serum by ammonium sulphate precipitation followed by antigen affinity chromatography using the immunizing peptide.

Supplied at 0.5 mg/ml in Tris saline, 0.02% sodium azide, pH7.3 with 0.5% bovine serum albumin.

Aliquot and store at -20°C. Minimize freezing and thawing.

Applications Tested

Peptide ELISA: antibody detection limit dilution 1:32000.

Western blot: Approx 75kDa band observed in Human Breast lysates (calculated MW of 82.2kDa according to NP_075593, 81.9kDa according to NP_075594). Recommended concentration: 0.3-1µg/ml.

IHC: In paraffin embedded Human Small Intestine shows staining of the enterocytic cytoplasm. Recommended concentration: 4-6µg/ml. Paraffin embedded Human Kidney. Recommended concentration: 4µg/ml.

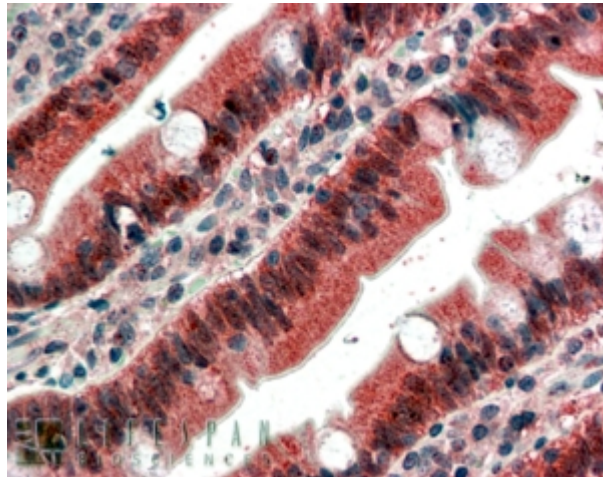
Species Reactivity

Tested: Human

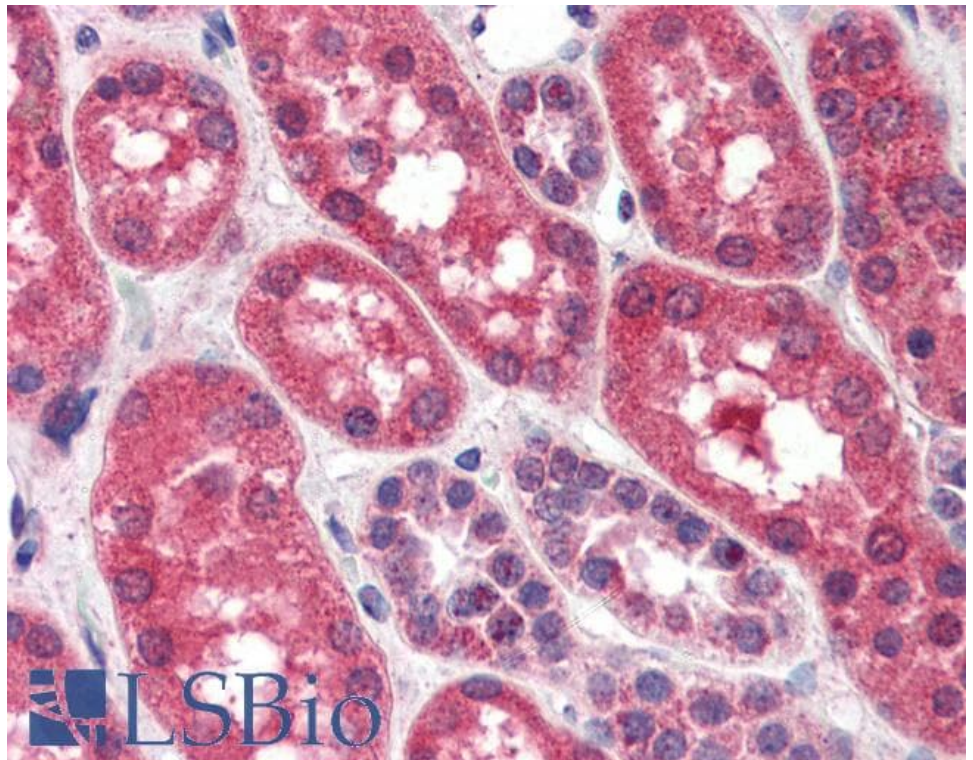
Expected from sequence similarity: Human, Dog, Cow



EB06649 (0.3 μ g/ml) staining of Human Breast lysate (35 μ g protein in RIPA buffer). Primary incubation was 1 hour. Detected by chemiluminescence.



EB06649 (4 μ g/ml) staining of paraffin embedded Human Small Intestine. Steamed antigen retrieval with citrate buffer pH 6, AP-staining.



EB06649 (4µg/ml) staining of paraffin embedded Human Kidney. Steamed antigen retrieval with citrate buffer pH 6, AP-staining.