



SZABO SCANDIC

Part of Europa Biosite

Produktinformation



Forschungsprodukte & Biochemikalien



Zellkultur & Verbrauchsmaterial



Diagnostik & molekulare Diagnostik



Laborgeräte & Service

Weitere Information auf den folgenden Seiten!
See the following pages for more information!



Lieferung & Zahlungsart

siehe unsere [Liefer- und Versandbedingungen](#)

Zuschläge

- Mindermengenzuschlag
- Trockeneiszuschlag
- Gefahrgutzuschlag
- Expressversand

SZABO-SCANDIC HandelsgmbH

Quellenstraße 110, A-1100 Wien

T. +43(0)1 489 3961-0

F. +43(0)1 489 3961-7

mail@szabo-scandic.com

www.szabo-scandic.com

[linkedin.com/company/szaboscandic](https://www.linkedin.com/company/szaboscandic) 



UK Office

Everest Biotech Ltd

Cherwell Innovation Centre
77 Heyford Park
Upper Heyford
Oxfordshire
OX25 5HD
UK

Enquiries:

info@everestbiotech.com

Sales:

sales@everestbiotech.com

Tech support:

support@everestbiotech.com

Tel: +44 (0)1869 238326

Fax: +44 (0)1869 238327

US Office

Everest Biotech c/o Abcore

405 Maple Street, Suite A106
Ramona,
CA 92065
USA

Inquiries:

info@everestbiotech.com

Sales:

usasales@everestbiotech.com

Tech support:

support@everestbiotech.com

Tel: 888-320-4628 (toll-free)

Fax: 888-841-9041

www.everestbiotech.com

**Research Use Only. Not for
diagnostic or therapeutic use.**

EB06670 - Goat Anti-Asporin / ASPN Antibody

Size: 100µg specific antibody in 200µl



Target Protein

Principal Names: ASPN, PLAP1, SLRR1C, FLJ20129, asporin (LRR class 1), small leucine-rich protein 1C, periodontal ligament associated protein 1, asporin, OS3, asporin proteoglycan

Official Symbol: ASPN

Accession Number(s): NP_060150.4

Human GeneID(s): [54829](#)

Immunogen

Peptide with sequence C-IHENKVKKIQKDT, from the internal region of the protein sequence according to NP_060150.4.

Please note the [peptide](#) is available for sale.

Purification and Storage

Purified from goat serum by ammonium sulphate precipitation followed by antigen affinity chromatography using the immunizing peptide.

Supplied at 0.5 mg/ml in Tris saline, 0.02% sodium azide, pH7.3 with 0.5% bovine serum albumin.

Aliquot and store at -20°C. Minimize freezing and thawing.

Applications Tested

Peptide ELISA: antibody detection limit dilution 1:64000.

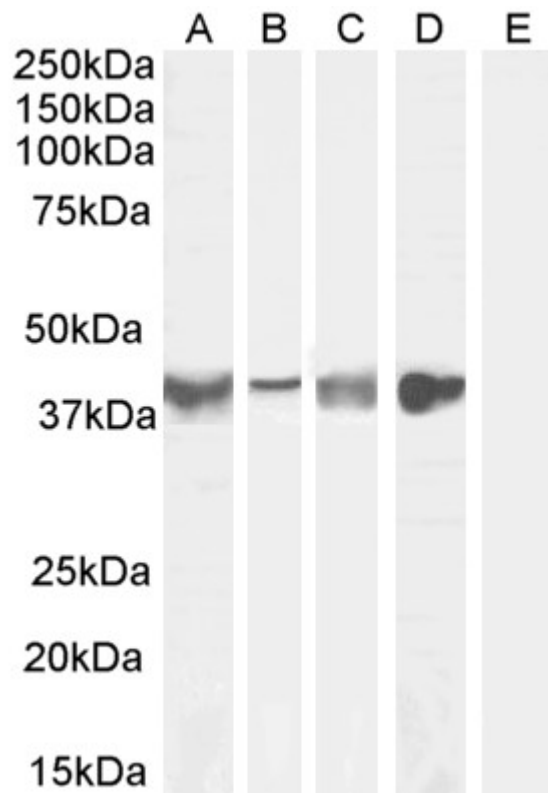
Western blot: Approx 40kDa band observed in Human Tonsil and Uterus and in Mouse and Rat Skeletal Muscle lysates (calculated MW of 43.3kDa according to Human NP_060150.4, and 42.6kDa according to Mouse NP_001165952.1 and Rat NP_001014030.1). Recommended concentration: 0.1-1µg/ml. Primary incubation 1 hour at room temperature. **Negative Control:** Human Cerebellum lysate.

Immunofluorescence: Strong expression of the protein seen in the cytoplasm of HeLa cells. Recommended concentration: 10µg/ml.

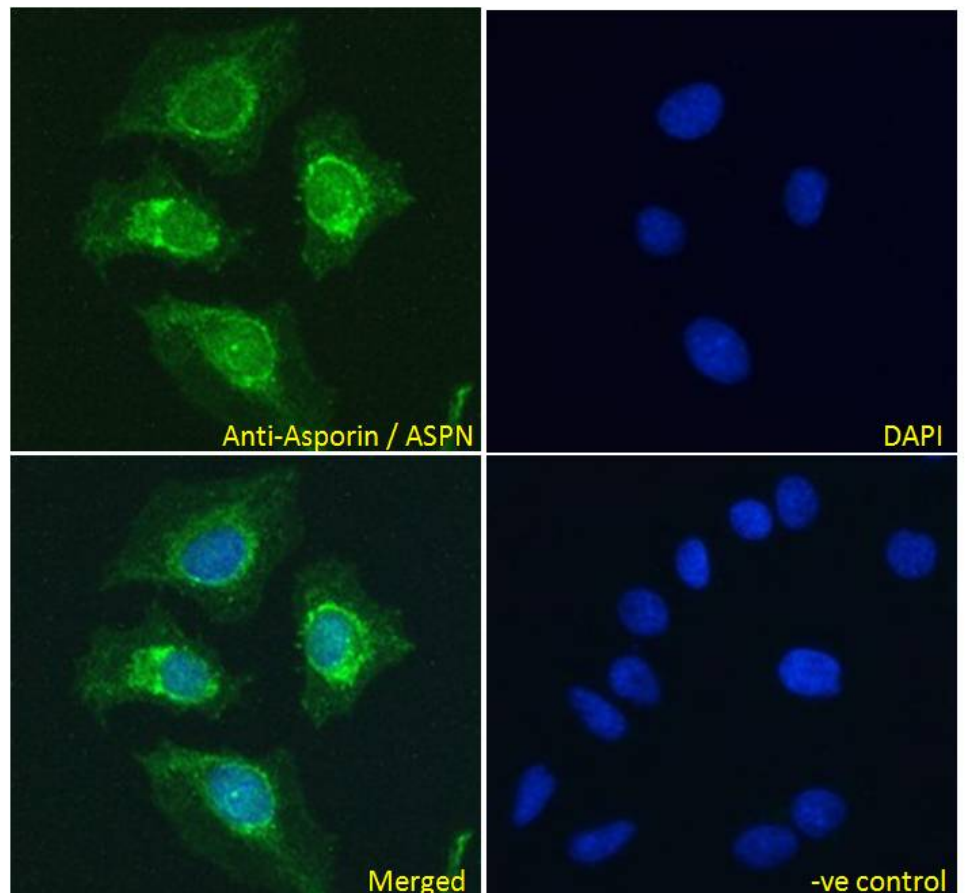
Species Reactivity

Tested: Human, Mouse, Rat

Expected from sequence similarity: Human, Mouse, Rat



EB06670 (0.1 μ g/ml) staining of Human Tonsil (A), (0.3 μ g/ml) Human Uterus (B), Mouse Skeletal Muscle (C) (1 μ g/ml) Rat Skeletal Muscle (D) and negative control Human Cerebellum (E) lysate (35 μ g protein in RIPA buffer). Detected by chemiluminescence.



EB06670 Immunofluorescence analysis of paraformaldehyde fixed HeLa cells, permeabilized with 0.15% Triton. Primary incubation 1hr (10 μ g/ml) followed by Alexa Fluor 488 secondary antibody (4 μ g/ml), showing nuclear

membrane staining. The nuclear stain is DAPI (blue). Negative control: Unimmunized goat IgG (10ug/ml) followed by Alexa Fluor 488 secondary antibody (4ug/ml).