



# SZABO SCANDIC

Part of Europa Biosite

## Produktinformation



Forschungsprodukte & Biochemikalien



Zellkultur & Verbrauchsmaterial



Diagnostik & molekulare Diagnostik



Laborgeräte & Service

Weitere Information auf den folgenden Seiten!  
See the following pages for more information!



### Lieferung & Zahlungsart

siehe unsere [Liefer- und Versandbedingungen](#)

### Zuschläge

- Mindermengenzuschlag
- Trockeneiszuschlag
- Gefahrgutzuschlag
- Expressversand

### SZABO-SCANDIC HandelsgmbH

Quellenstraße 110, A-1100 Wien

T. +43(0)1 489 3961-0

F. +43(0)1 489 3961-7

[mail@szabo-scandic.com](mailto:mail@szabo-scandic.com)

[www.szabo-scandic.com](http://www.szabo-scandic.com)

[linkedin.com/company/szaboscandic](https://www.linkedin.com/company/szaboscandic) 



## UK Office

### Everest Biotech Ltd

Cherwell Innovation Centre  
77 Heyford Park  
Upper Heyford  
Oxfordshire  
OX25 5HD  
UK

Enquiries:

[info@everestbiotech.com](mailto:info@everestbiotech.com)

Sales:

[sales@everestbiotech.com](mailto:sales@everestbiotech.com)

Tech support:

[support@everestbiotech.com](mailto:support@everestbiotech.com)

Tel: +44 (0)1869 238326

Fax: +44 (0)1869 238327

## US Office

### Everest Biotech c/o Abcore

405 Maple Street, Suite A106  
Ramona,  
CA 92065  
USA

Inquiries:

[info@everestbiotech.com](mailto:info@everestbiotech.com)

Sales:

[usasales@everestbiotech.com](mailto:usasales@everestbiotech.com)

Tech support:

[support@everestbiotech.com](mailto:support@everestbiotech.com)

Tel: 888-320-4628 (toll-free)

Fax: 888-841-9041

[www.everestbiotech.com](http://www.everestbiotech.com)

**Research Use Only. Not for  
diagnostic or therapeutic use.**

## EB06688 - Goat Anti-Neuroserpin Antibody

Size: 100µg specific antibody in 200µl



### Target Protein

**Principal Names:** neuroserpin, SERPINI1, P112, serine (or cysteine) proteinase inhibitor, clade I (neuroserpin), member 1, protease inhibitor 12 (neuroserpin), serpin peptidase inhibitor, clade I (neuroserpin), member 1, DKFZp781N13156

**Official Symbol:** SERPINI1

**Accession Number(s):** NP\_005016.1

**Human GeneID(s):** [5274](#)

**Important Comments:** Reported variants represent identical protein (NP\_005016.1; NP\_001116224.1).

### Immunogen

Peptide with sequence C-TMNTSGHDFEEL, from the C Terminus of the protein sequence according to NP\_005016.1.

Please note the [peptide](#) is available for sale.

### Purification and Storage

Purified from goat serum by ammonium sulphate precipitation followed by antigen affinity chromatography using the immunizing peptide.

Supplied at 0.5 mg/ml in Tris saline, 0.02% sodium azide, pH7.3 with 0.5% bovine serum albumin.

Aliquot and store at -20°C. Minimize freezing and thawing.

### Applications Tested

**Peptide ELISA:** antibody detection limit dilution 1:32000.

**Western blot:** Approx 48kDa band observed in lysates of cell lines Kelly and K562 and in Human Placenta and Mouse and Rat Brain lysates (calculated MW of 46.4kDa according to Human NP\_005016.1, Mouse NP\_033276.1 and Rat NP\_446231.1). Recommended concentration: 0.5-2ug/ml. Primary incubation 1 hour at room temperature.

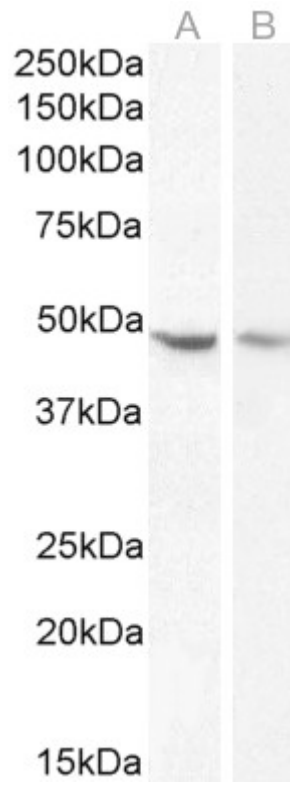
**IHC:** Paraffin embedded Human Brain (Cortex). Recommended concentration: 5µg/ml.

**Flow Cytometry:** Flow cytometric analysis of HeLa cells. Recommended concentration: 10ug/ml.

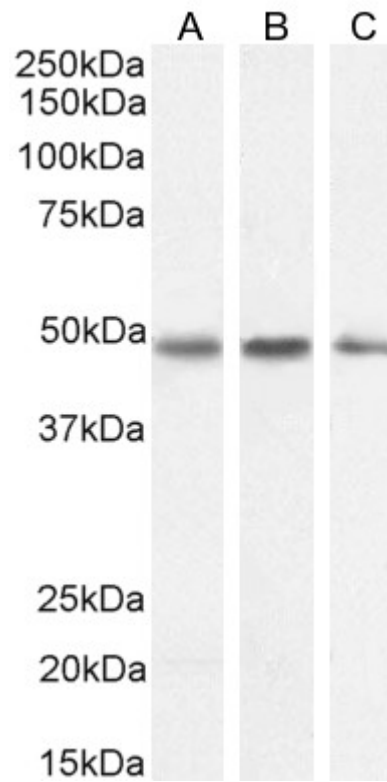
### Species Reactivity

**Tested:** Human, Mouse, Rat

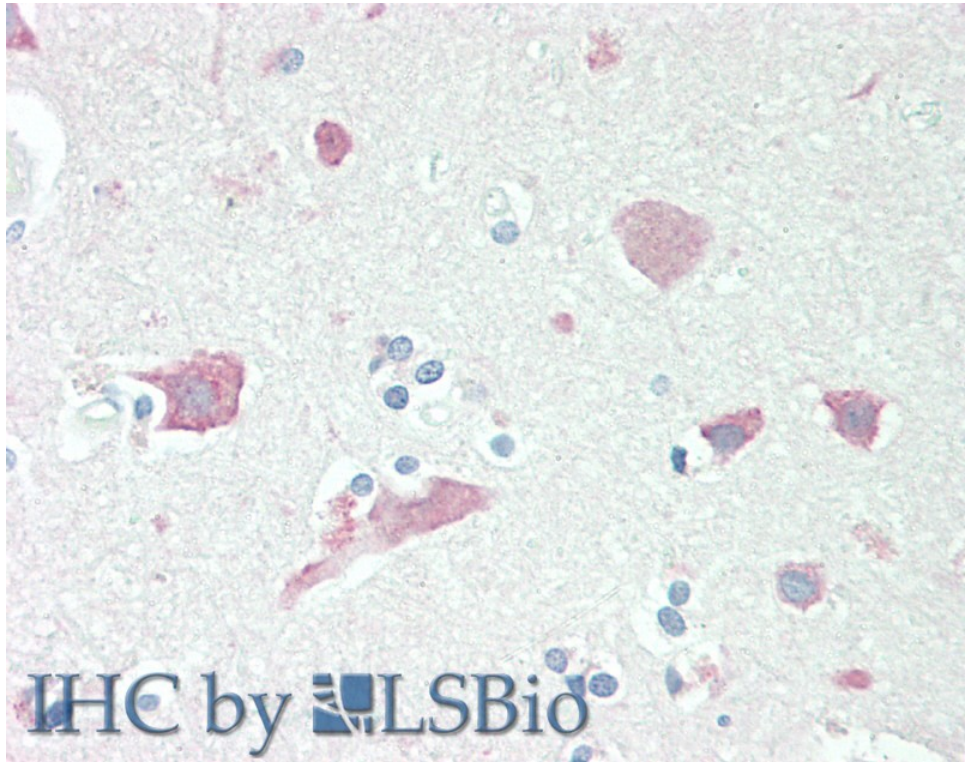
**Expected from sequence similarity:** Human, Mouse, Rat, Pig, Cow



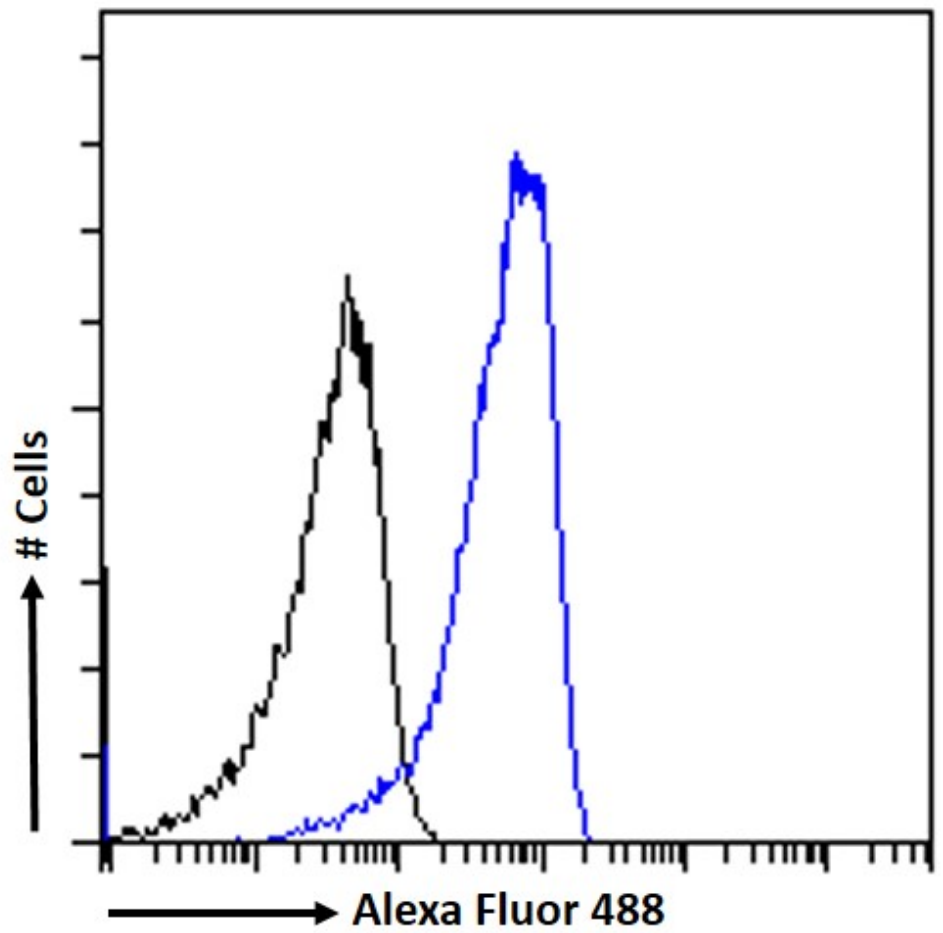
EB06688 (1 $\mu$ g/ml) staining of Kelly (A) and K562 (B) cell lysate (35 $\mu$ g protein in RIPA buffer). Detected by chemiluminescence.



EB06688 (1 $\mu$ g/ml) staining of Human Placenta (A), Mouse Brain (B) and (0.5 $\mu$ g/ml) Rat Braun (C) lysate (35 $\mu$ g protein in RIPA buffer). Detected by chemiluminescence.



EB06688 (5µg/ml) staining of paraffin embedded Human Cortex. Steamed antigen retrieval with citrate buffer pH 6, AP-staining.



EB06688 Flow cytometric analysis of paraformaldehyde fixed HeLa cells (blue line), permeabilized with 0.5% Triton. Primary incubation 1hr (10ug/ml) followed by Alexa Fluor 488 secondary antibody (1ug/ml). IgG control: Unimmunized goat IgG (black line) followed by Alexa Fluor 488 secondary antibody.