



SZABO SCANDIC

Part of Europa Biosite

Produktinformation



Forschungsprodukte & Biochemikalien



Zellkultur & Verbrauchsmaterial



Diagnostik & molekulare Diagnostik



Laborgeräte & Service

Weitere Information auf den folgenden Seiten!
See the following pages for more information!



Lieferung & Zahlungsart

siehe unsere [Liefer- und Versandbedingungen](#)

Zuschläge

- Mindermengenzuschlag
- Trockeneiszuschlag
- Gefahrgutzuschlag
- Expressversand

SZABO-SCANDIC HandelsgmbH

Quellenstraße 110, A-1100 Wien

T. +43(0)1 489 3961-0

F. +43(0)1 489 3961-7

mail@szabo-scandic.com

www.szabo-scandic.com

[linkedin.com/company/szaboscandic](https://www.linkedin.com/company/szaboscandic) 



UK Office

Everest Biotech Ltd

Cherwell Innovation Centre
77 Heyford Park
Upper Heyford
Oxfordshire
OX25 5HD
UK

Enquiries:

info@everestbiotech.com

Sales:

sales@everestbiotech.com

Tech support:

support@everestbiotech.com

Tel: +44 (0)1869 238326

Fax: +44 (0)1869 238327

US Office

Everest Biotech c/o Abcore

405 Maple Street, Suite A106
Ramona,
CA 92065
USA

Inquiries:

info@everestbiotech.com

Sales:

usasales@everestbiotech.com

Tech support:

support@everestbiotech.com

Tel: 888-320-4628 (toll-free)

Fax: 888-841-9041

www.everestbiotech.com

**Research Use Only. Not for
diagnostic or therapeutic use.**

EB06689 - Goat Anti-MEPI / SERPIN2 Antibody

Size: 100µg specific antibody in 200µl



Target Protein

Principal Names: SERPIN2, MEPI, PI14, PANC1P, TSA2004, SERPIN12, serine (or cysteine) proteinase inhibitor, clade I (neuroserpin), member 2, serpin peptidase inhibitor, clade I (panc1p), member 2, myoepithelium-derived serine protease inhibitor, protease inhibitor 14, serine (or cysteine) proteinase inhibitor, clade I (panc1p), member 2

Official Symbol: SERPIN2

Accession Number(s): NP_006208.1; NP_001012303.1

Human GeneID(s): [5276](#)

Non-Human GeneID(s): 67931 (mouse), 171149 (rat)

Important Comments: This antibody is expected to recognise both reported isoforms (NP_006208.1; NP_001012303.1).

Immunogen

Peptide with sequence C-KGDWKQKFRKEDTQ, from the internal region of the protein sequence according to NP_006208.1; NP_001012303.1.

Please note the [peptide](#) is available for sale.

Purification and Storage

Purified from goat serum by ammonium sulphate precipitation followed by antigen affinity chromatography using the immunizing peptide.

Supplied at 0.5 mg/ml in Tris saline, 0.02% sodium azide, pH7.3 with 0.5% bovine serum albumin.

Aliquot and store at -20°C. Minimize freezing and thawing.

Applications Tested

Peptide ELISA: antibody detection limit dilution 1:64000.

Western blot: Approx 40kDa band observed in Human Pancreas lysates (calculated MW of 46.1kDa according to NP_006208.1 and 47.4kDa according to NP_001012303.1).

Recommended concentration: 0.3-1µg/ml. Primary incubation was 1 hour. This product has been successfully used in WB on Human in PMID: 21499210.

IHC: In paraffin embedded Human Pancreas, shows cytoplasmic staining of acinar cells and of rare cells in the islets of Langerhans. Recommended concentration, 3µg/ml. This product has been successfully used in IHC on Human in PMID: 21499210.

Species Reactivity

Tested: Human

Expected from sequence similarity: Human, Mouse, Rat, Dog

Specific Reference

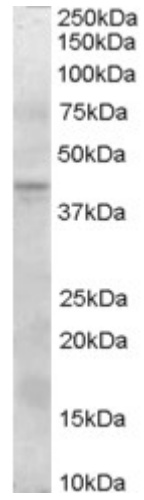
This antibody has been successfully used in WB and IHC on Human:

Wehr AY, Furth EE, Sangar V, Blair IA, Yu KH.

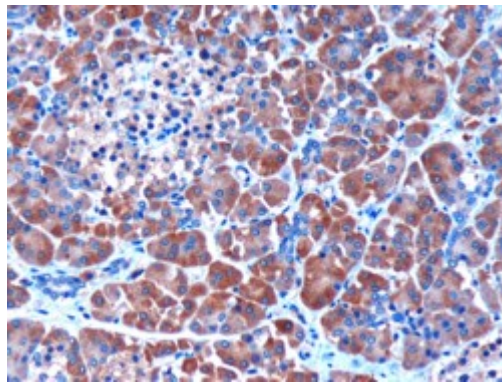
Analysis of the human pancreatic stellate cell secreted proteome.

Pancreas. 2011 May;40(4):557-66.

PMID: 21499210



EB06689 (0.3 μ g/ml) staining of Human Pancreas lysate (35 μ g protein in RIPA buffer). Detected by chemiluminescence.



EB06689 (3 μ g/ml) staining of paraffin embedded Human Pancreas. Microwaved antigen retrieval with citrate buffer pH 6, HRP-staining