



SZABO SCANDIC

Part of Europa Biosite

Produktinformation



Forschungsprodukte & Biochemikalien



Zellkultur & Verbrauchsmaterial



Diagnostik & molekulare Diagnostik



Laborgeräte & Service

Weitere Information auf den folgenden Seiten!
See the following pages for more information!



Lieferung & Zahlungsart

siehe unsere [Liefer- und Versandbedingungen](#)

Zuschläge

- Mindermengenzuschlag
- Trockeneiszuschlag
- Gefahrgutzuschlag
- Expressversand

SZABO-SCANDIC HandelsgmbH

Quellenstraße 110, A-1100 Wien

T. +43(0)1 489 3961-0

F. +43(0)1 489 3961-7

mail@szabo-scandic.com

www.szabo-scandic.com

[linkedin.com/company/szaboscandic](https://www.linkedin.com/company/szaboscandic) 



UK Office

Everest Biotech Ltd

Cherwell Innovation Centre
77 Heyford Park
Upper Heyford
Oxfordshire
OX25 5HD
UK

Enquiries:

info@everestbiotech.com

Sales:

sales@everestbiotech.com

Tech support:

support@everestbiotech.com

Tel: +44 (0)1869 238326

Fax: +44 (0)1869 238327

US Office

Everest Biotech c/o Abcore

405 Maple Street, Suite A106
Ramona,
CA 92065
USA

Inquiries:

info@everestbiotech.com

Sales:

usasales@everestbiotech.com

Tech support:

support@everestbiotech.com

Tel: 888-320-4628 (toll-free)

Fax: 888-841-9041

www.everestbiotech.com

**Research Use Only. Not for
diagnostic or therapeutic use.**

EB06695 - Goat Anti-CD32 / FCGR2B Antibody

Size: 100µg specific antibody in 200µl



Target Protein

Principal Names: FCGR2B, CD32, FCG2, FCGR2, IGFR2, Fc fragment of IgG, low affinity IIb, receptor for (CD32), Fc gamma RIIb, Fc fragment of IgG, low affinity II, receptor for (CD32), Fc fragment of IgG, low affinity IIb, receptor (CD32), CD32B, Fc fragment of IgG, low affinity IIb, receptor

Official Symbol: FCGR2B

Accession Number(s): NP_003992.3; NP_001002273.1; NP_001002274.1; NP_001002275.1; NP_001177757.1

Human GeneID(s): [2213](#)

Important Comments: This antibody is expected to recognise all reported isoforms (NP_001002273.1; NP_001002274.1; NP_001002275.1; NP_003992.3; NP_001177757.1).

Immunogen

Peptide with sequence C-PDALEEPDDQNRI, from the C Terminus of the protein sequence according to NP_003992.3; NP_001002273.1; NP_001002274.1; NP_001002275.1; NP_001177757.1.

Please note the [peptide](#) is available for sale.

Purification and Storage

Purified from goat serum by ammonium sulphate precipitation followed by antigen affinity chromatography using the immunizing peptide.

Supplied at 0.5 mg/ml in Tris saline, 0.02% sodium azide, pH7.3 with 0.5% bovine serum albumin.

Aliquot and store at -20°C. Minimize freezing and thawing.

Applications Tested

Peptide ELISA: antibody detection limit dilution 1:32000.

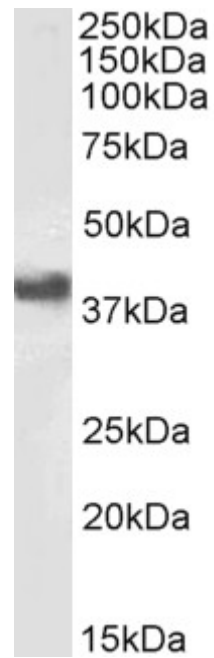
Western blot: Approx 38kDa band observed in lysates of cell line Daudi (calculated MW of 34.0kDa according to NP_003992.3). This molecular weight is routinely observed by other sources. Recommended concentration: 0.3-1µg/ml. Primary incubation was 1 hour.

IHC: Paraffin embedded Human Placenta. Recommended concentration: 6-8µg/ml.

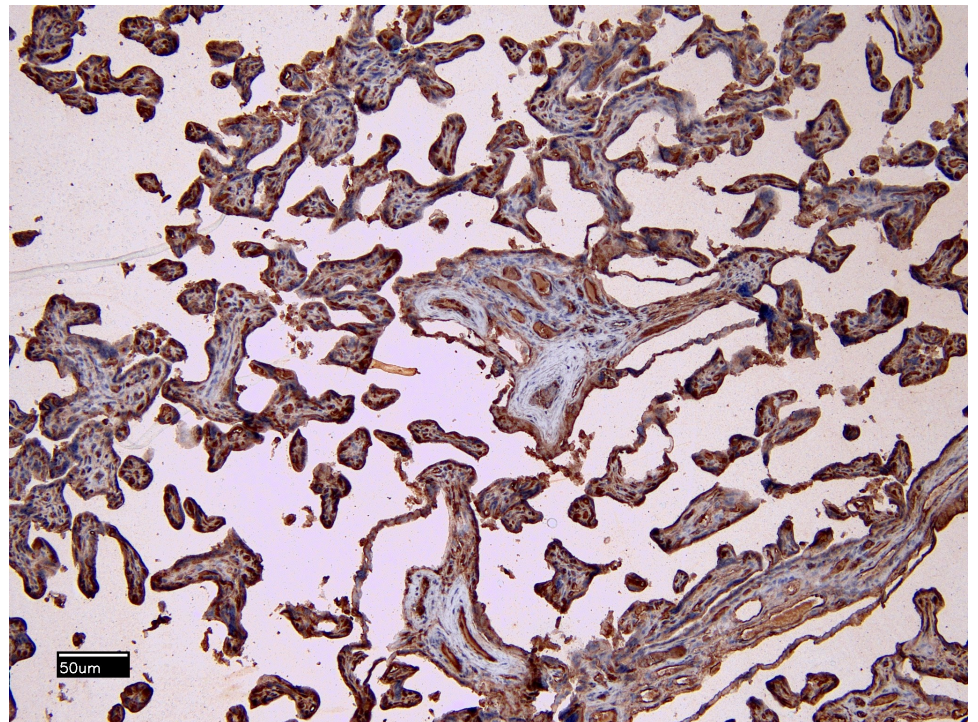
Species Reactivity

Tested: Human

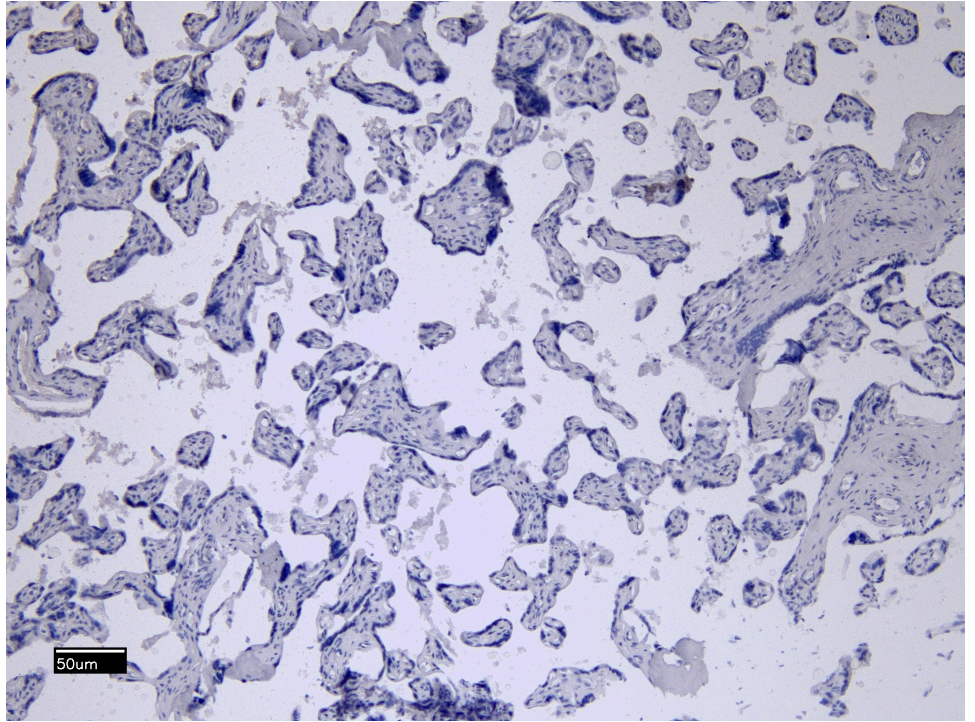
Expected from sequence similarity: Human



EB06695 (1 μ g/ml) staining of Daudi cell lysate (RIPA buffer, (35 μ g protein in RIPA buffer). Detected by chemiluminescence.



EB06695 (8 μ g/ml) staining of paraffin embedded Human Placenta. Heat induced antigen retrieval with citrate buffer pH 6, HRP-staining.



EB06695 Negative Control showing staining of paraffin embedded Human Placenta, with no primary antibody.