



SZABO SCANDIC

Part of Europa Biosite

Produktinformation



Forschungsprodukte & Biochemikalien



Zellkultur & Verbrauchsmaterial



Diagnostik & molekulare Diagnostik



Laborgeräte & Service

Weitere Information auf den folgenden Seiten!
See the following pages for more information!



Lieferung & Zahlungsart

siehe unsere [Liefer- und Versandbedingungen](#)

Zuschläge

- Mindermengenzuschlag
- Trockeneiszuschlag
- Gefahrgutzuschlag
- Expressversand

SZABO-SCANDIC HandelsgmbH

Quellenstraße 110, A-1100 Wien

T. +43(0)1 489 3961-0

F. +43(0)1 489 3961-7

mail@szabo-scandic.com

www.szabo-scandic.com

[linkedin.com/company/szaboscandic](https://www.linkedin.com/company/szaboscandic) 



UK Office

Everest Biotech Ltd

Cherwell Innovation Centre
77 Heyford Park
Upper Heyford
Oxfordshire
OX25 5HD
UK

Enquiries:

info@everestbiotech.com

Sales:

sales@everestbiotech.com

Tech support:

support@everestbiotech.com

Tel: +44 (0)1869 238326

Fax: +44 (0)1869 238327

US Office

Everest Biotech c/o Abcore

405 Maple Street, Suite A106
Ramona,
CA 92065
USA

Inquiries:

info@everestbiotech.com

Sales:

usasales@everestbiotech.com

Tech support:

support@everestbiotech.com

Tel: 888-320-4628 (toll-free)

Fax: 888-841-9041

www.everestbiotech.com

**Research Use Only. Not for
diagnostic or therapeutic use.**

EB06717 - Goat Anti-PP2A / PPP2R1A Antibody

Size: 100µg specific antibody in 200µl



Target Protein

Principal Names: PPP2R1A, MGC786, protein phosphatase 2 (formerly 2A), regulatory subunit A (PR 65), alpha isoform, PP2A, subunit A, R1-alpha isoform, PP2A, subunit A, PR65-alpha isoform, medium tumor antigen-associated 61 KDA protein, Serine/threonine protein phosphatase 2A, 65 KDA regulatory subunit A, alpha isoform, protein phosphatase 2 (formerly 2A), regulatory subunit A, alpha isoform, PR65A, alpha isoform of regulatory subunit A, protein phosphatase 2, medium tumor antigen-associated 61 KDA protein, protein phosphatase 2 (formerly 2A), regulatory subunit A (PR 65), alpha isoform

Official Symbol: PPP2R1A

Accession Number(s): NP_055040.2

Human GeneID(s): [5518](#)

Immunogen

Peptide with sequence C-KYFAQEALTVLSLA, from the C Terminus of the protein sequence according to NP_055040.2.

Please note the [peptide](#) is available for sale.

Purification and Storage

Purified from goat serum by ammonium sulphate precipitation followed by antigen affinity chromatography using the immunizing peptide.

Supplied at 0.5 mg/ml in Tris saline, 0.02% sodium azide, pH7.3 with 0.5% bovine serum albumin.

Aliquot and store at -20°C. Minimize freezing and thawing.

Applications Tested

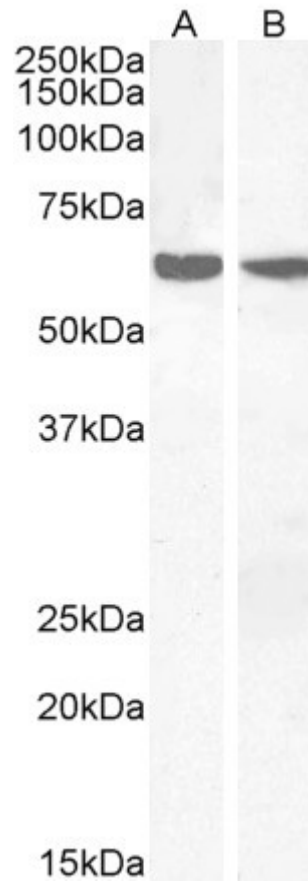
Peptide ELISA: antibody detection limit dilution 1:4000.

Western blot: Approx 60-65kDa band observed in Human Thymus and Human Lymph node lysates (calculated MW of 65.3kDa according to NP_055040.2). Recommended concentration: 2-6µg/ml.

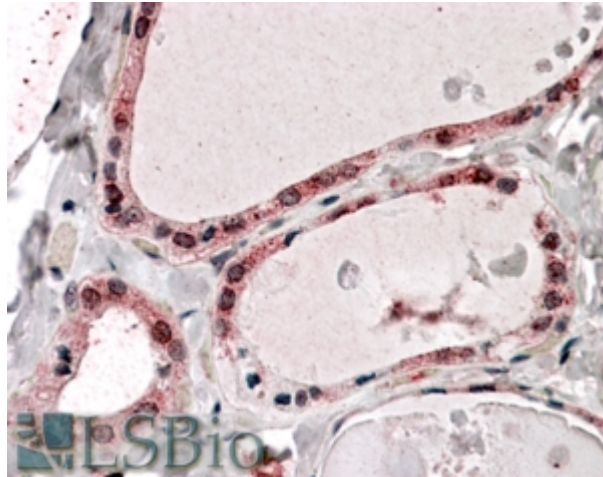
Species Reactivity

Tested: Human

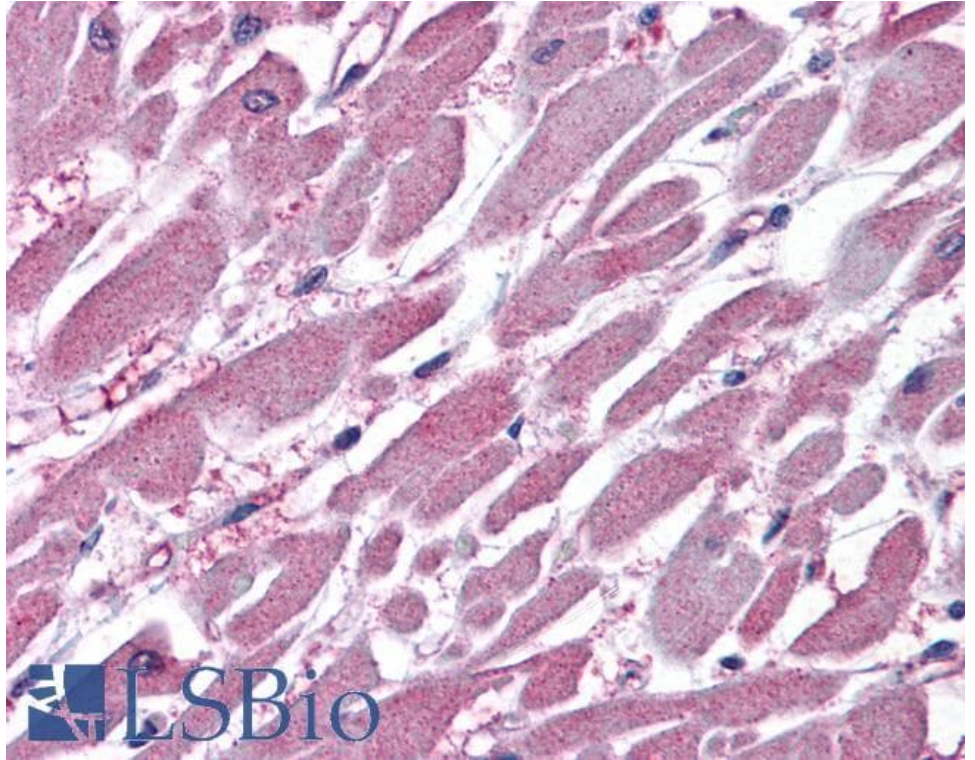
Expected from sequence similarity: Human, Mouse, Rat, Dog, Pig, Cow



EB06717 (2 μ g/ml) staining of Human Thymus (A) and Human Lymph node (B) lysates (35 μ g protein in RIPA buffer). Primary incubation was 1 hour. Detected by chemiluminescence.



EB06717 (3.75 μ g/ml) staining of paraffin embedded Human Thyroid Gland. Steamed antigen retrieval with citrate buffer pH 6, AP-staining. **This data is from a previous batch, not on sale.**



EB06717 (3.75µg/ml) staining of paraffin embedded Human Heart. Steamed antigen retrieval with citrate buffer pH 6, AP-staining. **This data is from a previous batch, not on sale.**