



SZABO SCANDIC

Part of Europa Biosite

Produktinformation



Forschungsprodukte & Biochemikalien



Zellkultur & Verbrauchsmaterial



Diagnostik & molekulare Diagnostik



Laborgeräte & Service

Weitere Information auf den folgenden Seiten!
See the following pages for more information!



Lieferung & Zahlungsart

siehe unsere [Liefer- und Versandbedingungen](#)

Zuschläge

- Mindermengenzuschlag
- Trockeneiszuschlag
- Gefahrgutzuschlag
- Expressversand

SZABO-SCANDIC HandelsgmbH

Quellenstraße 110, A-1100 Wien

T. +43(0)1 489 3961-0

F. +43(0)1 489 3961-7

mail@szabo-scandic.com

www.szabo-scandic.com

[linkedin.com/company/szaboscandic](https://www.linkedin.com/company/szaboscandic) 



UK Office

Everest Biotech Ltd

Cherwell Innovation Centre
77 Heyford Park
Upper Heyford
Oxfordshire
OX25 5HD
UK

Enquiries:

info@everestbiotech.com

Sales:

sales@everestbiotech.com

Tech support:

support@everestbiotech.com

Tel: +44 (0)1869 238326

Fax: +44 (0)1869 238327

US Office

Everest Biotech c/o Abcore

405 Maple Street, Suite A106
Ramona,
CA 92065
USA

Inquiries:

info@everestbiotech.com

Sales:

usasales@everestbiotech.com

Tech support:

support@everestbiotech.com

Tel: 888-320-4628 (toll-free)

Fax: 888-841-9041

www.everestbiotech.com

**Research Use Only. Not for
diagnostic or therapeutic use.**

EB06727 - Goat Anti-Proopiomelanocortin / POMC Antibody

Size: 100µg specific antibody in 200µl



Target Protein

Principal Names: POMC, proopiomelanocortin, Precursor of MSH, POC, ACTH, CLIP, adrenocorticotropin/ beta-lipotropin/ alpha-melanocyte stimulating hormone/ beta-melanocyte stimulating hormone/ beta-endorphin, LPH, NPP, OTTHUMP00000119991, OTTHUMP00000200964, adrenocorticotrophic hormone, adrenocorticotropin, alpha-melanocyte-stimulating hormone, beta-LPH, beta-MSH, beta-melanocyte-stimulating hormone, corticotropin-like intermediary peptide, gamma-LPH, gamma-MSH, lipotropin beta, lipotropin gamma, melanotropin alpha, melanotropin beta, melanotropin gamma, met-enkephalin, pro-ACTH-endorphin, proopiomelanocortin preproprotein

Official Symbol: POMC

Accession Number(s): NP_000930.1; NP_001030333.1

Human GenelD(s): [5443](#)

Immunogen

Peptide with sequence C-NAIIKNAYKKGE, from the C Terminus of the protein sequence according to NP_000930.1; NP_001030333.1.

Please note the [peptide](#) is available for sale.

Purification and Storage

Purified from goat serum by ammonium sulphate precipitation followed by antigen affinity chromatography using the immunizing peptide.

Supplied at 0.5 mg/ml in Tris saline, 0.02% sodium azide, pH7.3 with 0.5% bovine serum albumin.

Aliquot and store at -20°C. Minimize freezing and thawing.

Applications Tested

Peptide ELISA: antibody detection limit dilution 1:128000.

Western blot: Preliminary testing showed a band at approx 30kDa in A431 cell lysate after 1µg/ml antibody staining (calculated MW of 29.4kDa according to NP_000930.1). Primary incubation 1 hour at room temperature.

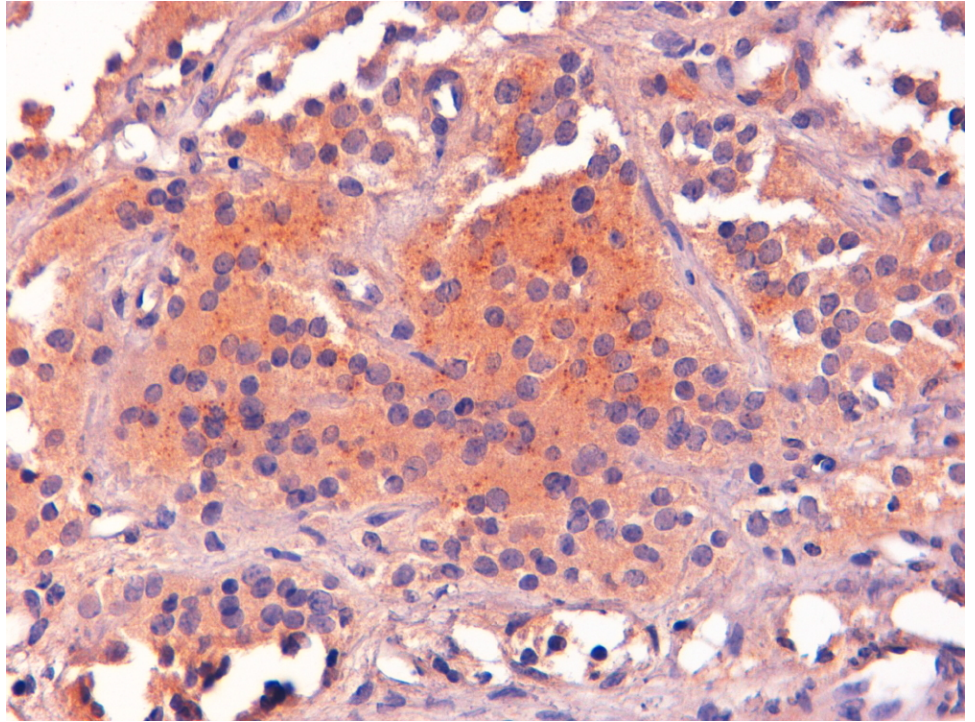
IHC: In paraffin embedded Human Anterior Pituitary Gland shows vesiculate staining in glandular cells. Recommended concentration: 2-4µg/ml.

Flow Cytometry: Flow cytometric analysis of A431 cells. Recommended concentration: 10ug/ml.

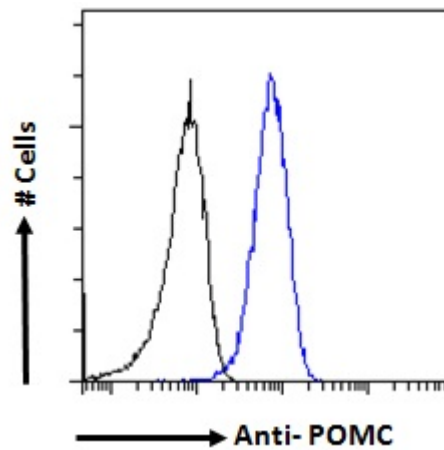
Species Reactivity

Tested: Human

Expected from sequence similarity: Human



EB06727 (2 μ g/ml) staining of paraffin embedded Human Pituitary Gland. Steamed antigen retrieval with Tris/EDTA buffer pH 9, HRP-staining.



EB06727 Flow cytometric analysis of paraformaldehyde fixed A431 cells (blue line), permeabilized with 0.5% Triton. Primary incubation 1hr (10ug/ml) followed by Alexa Fluor 488 secondary antibody (1ug/ml). IgG control: Unimmunized goat IgG (black line) followed by Alexa Fluor 488 secondary antibody.