



SZABO SCANDIC

Part of Europa Biosite

Produktinformation



Forschungsprodukte & Biochemikalien



Zellkultur & Verbrauchsmaterial



Diagnostik & molekulare Diagnostik



Laborgeräte & Service

Weitere Information auf den folgenden Seiten!
See the following pages for more information!



Lieferung & Zahlungsart

siehe unsere [Liefer- und Versandbedingungen](#)

Zuschläge

- Mindermengenzuschlag
- Trockeneiszuschlag
- Gefahrgutzuschlag
- Expressversand

SZABO-SCANDIC HandelsgmbH

Quellenstraße 110, A-1100 Wien

T. +43(0)1 489 3961-0

F. +43(0)1 489 3961-7

mail@szabo-scandic.com

www.szabo-scandic.com

[linkedin.com/company/szaboscandic](https://www.linkedin.com/company/szaboscandic) 



EB06731 - Goat Anti-Pyruvate dehydrogenase / PDHX Antibody

Size: 100µg specific antibody in 200µl



UK Office

Everest Biotech Ltd

Cherwell Innovation Centre
77 Heyford Park
Upper Heyford
Oxfordshire
OX25 5HD
UK

Enquiries:

info@everestbiotech.com

Sales:

sales@everestbiotech.com

Tech support:

support@everestbiotech.com

Tel: +44 (0)1869 238326

Fax: +44 (0)1869 238327

US Office

Everest Biotech c/o Abcore

405 Maple Street, Suite A106
Ramona,
CA 92065
USA

Inquiries:

info@everestbiotech.com

Sales:

usasales@everestbiotech.com

Tech support:

support@everestbiotech.com

Tel: 888-320-4628 (toll-free)

Fax: 888-841-9041

www.everestbiotech.com

Research Use Only. Not for diagnostic or therapeutic use.

Target Protein

Principal Names: PDHX, pyruvate dehydrogenase complex, component X, E3BP, OPDX, PDX1, proX, DLDBP, E3-binding protein, pyruvate dehydrogenase complex, lipoyl-containing component X, dihydrolipoamide dehydrogenase-binding protein of pyruvate dehydrogenase complex, pyruvate dehydrogenase complex, E3-binding protein subunit, pyruvate dehydrogenase protein X component, mitochondrial

Official Symbol: PDHX

Accession Number(s): NP_003468.2; NP_001128496.1; NP_001159630.1

Human GeneID(s): [8050](#)

Non-Human GeneID(s): 27402 (mouse)

Important Comments: This antibody is expected to recognise all reported isoforms.

Immunogen

Peptide with sequence C-KSFKANLENPIRLA, from the C Terminus of the protein sequence according to NP_003468.2; NP_001128496.1; NP_001159630.1.

Please note the [peptide](#) is available for sale.

Purification and Storage

Purified from goat serum by ammonium sulphate precipitation followed by antigen affinity chromatography using the immunizing peptide.

Supplied at 0.5 mg/ml in Tris saline, 0.02% sodium azide, pH7.3 with 0.5% bovine serum albumin.

Aliquot and store at -20°C. Minimize freezing and thawing.

Applications Tested

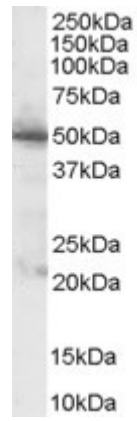
Peptide ELISA: antibody detection limit dilution 1:32000.

Western blot: Approx 50kDa band observed in Human Pancreas lysate (calculated MW of 54.2kDa according to NP_003468.1). In transfected HEK293 transiently expressing PDHX a band of approx. 50kDa is observed. This band is not observed in the non-transfected HEK293. Recommended concentration: 0.1-1µg/ml.

Species Reactivity

Tested: Human

Expected from sequence similarity: Human, Mouse, Rat, Dog



EB06371 (1 μ g/ml) staining of Human Pancreas lysate (35 μ g protein in RIPA buffer). Primary incubation was 1 hour. Detected by chemiluminescence.