



SZABO SCANDIC

Part of Europa Biosite

Produktinformation



Forschungsprodukte & Biochemikalien



Zellkultur & Verbrauchsmaterial



Diagnostik & molekulare Diagnostik



Laborgeräte & Service

Weitere Information auf den folgenden Seiten!
See the following pages for more information!



Lieferung & Zahlungsart

siehe unsere [Liefer- und Versandbedingungen](#)

Zuschläge

- Mindermengenzuschlag
- Trockeneiszuschlag
- Gefahrgutzuschlag
- Expressversand

SZABO-SCANDIC HandelsgmbH

Quellenstraße 110, A-1100 Wien

T. +43(0)1 489 3961-0

F. +43(0)1 489 3961-7

mail@szabo-scandic.com

www.szabo-scandic.com

[linkedin.com/company/szaboscandic](https://www.linkedin.com/company/szaboscandic) 



UK Office

Everest Biotech Ltd

Cherwell Innovation Centre
77 Heyford Park
Upper Heyford
Oxfordshire
OX25 5HD
UK

Enquiries:

info@everestbiotech.com

Sales:

sales@everestbiotech.com

Tech support:

support@everestbiotech.com

Tel: +44 (0)1869 238326

Fax: +44 (0)1869 238327

US Office

Everest Biotech c/o Abcore

405 Maple Street, Suite A106
Ramona,
CA 92065
USA

Inquiries:

info@everestbiotech.com

Sales:

usasales@everestbiotech.com

Tech support:

support@everestbiotech.com

Tel: 888-320-4628 (toll-free)

Fax: 888-841-9041

www.everestbiotech.com

**Research Use Only. Not for
diagnostic or therapeutic use.**

EB06732 - Goat Anti-RICTOR Antibody

Size: 100µg specific antibody in 200µl



Target Protein

Principal Names: Rictor, KIAA1999, AVO3, MGC39830, likely ortholog of mouse TORC2-specific protein AVO3 (*S. cerevisiae*), rapamycin-insensitive companion of mTOR, mAVO3, pianissimo, DKFZp686B11164, RICTOR, RPTOR independent companion of MTOR, complex 2, PIA, mAVO3, TORC2-specific protein AVO3

Official Symbol: RICTOR

Accession Number(s): NP_689969.2

Human GeneID(s): [253260](#)

Non-Human GeneID(s): 78757 (mouse)

Immunogen

Peptide with sequence C-KQPIVD TSAES, from the C Terminus of the protein sequence according to NP_689969.2.

Please note the [peptide](#) is available for sale.

Purification and Storage

Purified from goat serum by ammonium sulphate precipitation followed by antigen affinity chromatography using the immunizing peptide.

Supplied at 0.5 mg/ml in Tris saline, 0.02% sodium azide, pH7.3 with 0.5% bovine serum albumin.

Aliquot and store at -20°C. Minimize freezing and thawing.

Applications Tested

Peptide ELISA: antibody detection limit dilution 1:4000.

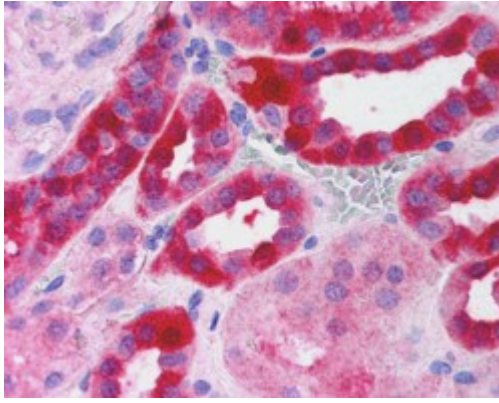
Western blot: Preliminary experiments gave an approx 38kDa band in Human Lung Carcinoma A549 cell line and cervix epitheloid carcinoma cell line HeLa lysates after 0.1µg/ml antibody staining. Please note that currently we cannot find an explanation in the literature for the band we observe given the calculated size of 192kDa according to NP_689969.2. The 38kDa band was successfully blocked by incubation with the immunizing peptide. We would appreciate any feedback from people in the field - have any results been reported with other antibodies/lysates? Have any further splice variants/modified forms been reported?

IHC: In paraffin embedded Kidney shows strong cytoplasmic staining of epithelial cells in distal convoluted tubules. Recommended concentration, 2-3µg/ml.

Species Reactivity

Tested: Human

Expected from sequence similarity: Human, Mouse, Dog



EB06732 (2.5µg/ml) staining of paraffin embedded Human Kidney. Steamed antigen retrieval with citrate buffer pH 6, AP-staining.