



SZABO SCANDIC

Part of Europa Biosite

Produktinformation



Forschungsprodukte & Biochemikalien



Zellkultur & Verbrauchsmaterial



Diagnostik & molekulare Diagnostik



Laborgeräte & Service

Weitere Information auf den folgenden Seiten!
See the following pages for more information!



Lieferung & Zahlungsart

siehe unsere [Liefer- und Versandbedingungen](#)

Zuschläge

- Mindermengenzuschlag
- Trockeneiszuschlag
- Gefahrgutzuschlag
- Expressversand

SZABO-SCANDIC HandelsgmbH

Quellenstraße 110, A-1100 Wien

T. +43(0)1 489 3961-0

F. +43(0)1 489 3961-7

mail@szabo-scandic.com

www.szabo-scandic.com

[linkedin.com/company/szaboscandic](https://www.linkedin.com/company/szaboscandic) 



UK Office

Everest Biotech Ltd

Cherwell Innovation Centre
77 Heyford Park
Upper Heyford
Oxfordshire
OX25 5HD
UK

Enquiries:

info@everestbiotech.com

Sales:

sales@everestbiotech.com

Tech support:

support@everestbiotech.com

Tel: +44 (0)1869 238326

Fax: +44 (0)1869 238327

US Office

Everest Biotech c/o Abcore

405 Maple Street, Suite A106
Ramona,
CA 92065
USA

Inquiries:

info@everestbiotech.com

Sales:

usasales@everestbiotech.com

Tech support:

support@everestbiotech.com

Tel: 888-320-4628 (toll-free)

Fax: 888-841-9041

www.everestbiotech.com

**Research Use Only. Not for
diagnostic or therapeutic use.**

EB06738 - Goat Anti-SNAP25 Antibody

Size: 100µg specific antibody in 200µl



Target Protein

Principal Names: SNAP25, synaptosomal-associated protein, 25kDa, HGNC:11132, FLJ23079, SNAP, SNAP-25, bA416N4.2, dJ1068F16.2, synaptosomal-associated protein 25, RIC-4, RIC4, SEC9, resistance to inhibitors of cholinesterase 4 homolog; synaptosomal-associated protein 25

Official Symbol: SNAP25

Accession Number(s): NP_003072.2; NP_570824.1

Human GeneID(s): [6616](#)

Non-Human GeneID(s): 20614 (mouse), 25012 (rat)

Important Comments: This antibody is expected to recognise both reported isoforms NP_003072.2 (SNAP25A) and NP_570824.1 (SNAP25B). Reported variants represent identical protein: NP_001309831.1, NP_003072.2 Reported variants represent identical protein: NP_001309834.1, NP_001309832.1, NP_001309833.1, NP_001309839.1, NP_001309836.1, NP_570824.1, NP_001309838.1, NP_001309835.1, NP_001309837.1

Immunogen

Peptide with sequence C-DEANQRATKMLGSG, from the C Terminus of the protein sequence according to NP_003072.2; NP_570824.1.

Please note the [peptide](#) is available for sale.

Purification and Storage

Purified from goat serum by ammonium sulphate precipitation followed by antigen affinity chromatography using the immunizing peptide.

Supplied at 0.5 mg/ml in Tris saline, 0.02% sodium azide, pH7.3 with 0.5% bovine serum albumin.

Aliquot and store at -20°C. Minimize freezing and thawing.

Applications Tested

Peptide ELISA: antibody detection limit dilution 1:64000.

Western blot: Approx 26kDa band observed in Human Brain (Cerebellum), Mouse and Rat Brain lysates (calculated MW of 23kDa and of 23.3kDa according to NP_003072.2; NP_570824.1). Recommended concentration: 0.005-0.01µg/ml. Primary incubation was 1 hour.

Species Reactivity

Tested: Human, Mouse, Rat

Expected from sequence similarity: Human, Mouse, Rat, Dog

Specific Reference

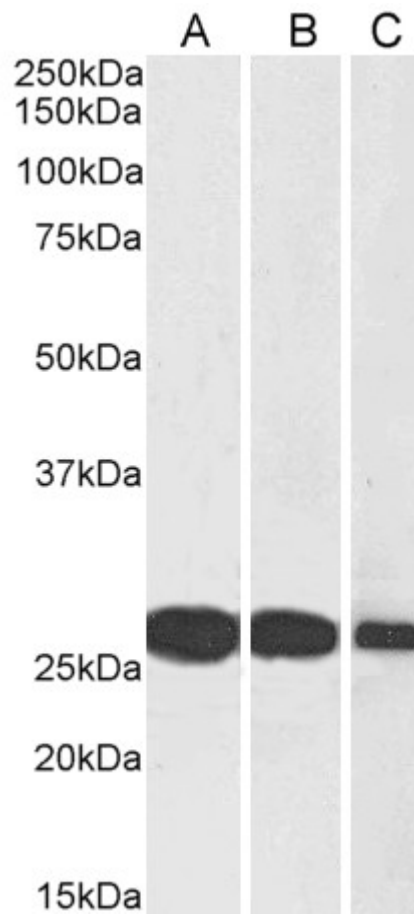
This antibody (previous batch) has been successfully used in WB, IHC and IF on Mouse:

Kawakami S, Ohmoto M, Itoh S, Yuasa R, Inagaki H, Nishimura E, Ito T, Misaka T.

Accumulation of SNAP25 in mouse gustatory and somatosensory cortices in response to food and chemical stimulation.

Neuroscience. 2012 Aug 30;218:326-34.

PMID: 22641083



EB06738 (0.005 μ g/ml) staining of Human Brain (Cerebellum) (A), Mouse Brain (B) and Rat Brain (C) lysates (35 μ g protein in RIPA buffer). Detected by chemiluminescence.