



SZABO SCANDIC

Part of Europa Biosite

Produktinformation



Forschungsprodukte & Biochemikalien



Zellkultur & Verbrauchsmaterial



Diagnostik & molekulare Diagnostik



Laborgeräte & Service

Weitere Information auf den folgenden Seiten!
See the following pages for more information!



Lieferung & Zahlungsart

siehe unsere [Liefer- und Versandbedingungen](#)

Zuschläge

- Mindermengenzuschlag
- Trockeneiszuschlag
- Gefahrgutzuschlag
- Expressversand

SZABO-SCANDIC HandelsgmbH

Quellenstraße 110, A-1100 Wien

T. +43(0)1 489 3961-0

F. +43(0)1 489 3961-7

mail@szabo-scandic.com

www.szabo-scandic.com

[linkedin.com/company/szaboscandic](https://www.linkedin.com/company/szaboscandic) 



UK Office

Everest Biotech Ltd

Cherwell Innovation Centre
77 Heyford Park
Upper Heyford
Oxfordshire
OX25 5HD
UK

Enquiries:

info@everestbiotech.com

Sales:

sales@everestbiotech.com

Tech support:

support@everestbiotech.com

Tel: +44 (0)1869 238326

Fax: +44 (0)1869 238327

US Office

Everest Biotech c/o Abcore

405 Maple Street, Suite A106
Ramona,
CA 92065
USA

Inquiries:

info@everestbiotech.com

Sales:

usasales@everestbiotech.com

Tech support:

support@everestbiotech.com

Tel: 888-320-4628 (toll-free)

Fax: 888-841-9041

www.everestbiotech.com

**Research Use Only. Not for
diagnostic or therapeutic use.**

EB06747 - Goat Anti-Renalase (aa 224 to 233) Antibody

Size: 100µg specific antibody in 200µl



Target Protein

Principal Names: renalase, C10orf59, chromosome 10 open reading frame 59, HGNC:25641, FLJ11218, hypothetical protein LOC55328, RNLS, renalase, FAD-dependent amine oxidase, RENALASE

Official Symbol: RNLS

Accession Number(s): NP_001026879.2; NP_060833.1

Human GeneID(s): [55328](#)

Important Comments: This antibody is expected to recognise both reported isoforms (NP_001026879.2 and NP_060833.1).

Immunogen

Peptide with sequence C-VSIDNKKRNI, from the internal region of the protein sequence according to NP_001026879.2; NP_060833.1.

Please note the [peptide](#) is available for sale.

Purification and Storage

Purified from goat serum by ammonium sulphate precipitation followed by antigen affinity chromatography using the immunizing peptide.

Supplied at 0.5 mg/ml in Tris saline, 0.02% sodium azide, pH7.3 with 0.5% bovine serum albumin.

Aliquot and store at -20°C. Minimize freezing and thawing.

Applications Tested

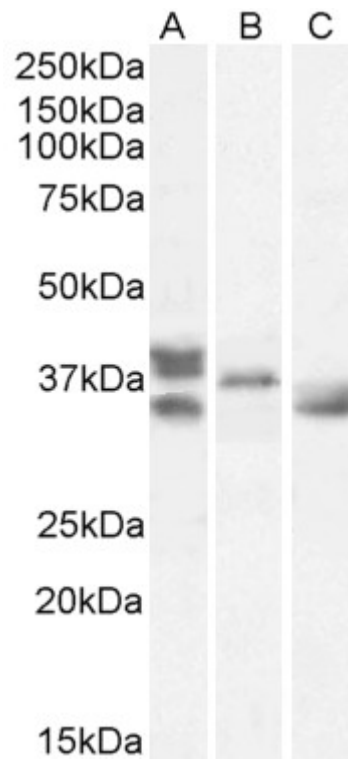
Peptide ELISA: antibody detection limit dilution 1:128000.

Western blot: Approx 38+35kDa bands observed in Human Heart lysates, 37kDa band observed in Mouse Heart lysates and approx 35kDa in Rat Heart lysates (calculated MW of 37.8 and 34.9 according to Human NP_001026879.2 and NP_060833.1 resp, of 33.3kDa according to Mouse NP_001161290.1 and of 35.0kDa according to Rat NP_001014189.1). Recommended concentration: 1-3µg/ml. Primary incubation was 1 hour.

Species Reactivity

Tested: Human, Mouse, Rat

Expected from sequence similarity: Human, Mouse, Rat, Dog, Cow



EB06747 (1 μ g/ml) staining of Human Heart (A), Mouse Heart (B), Rat Heart (C) lysates (35 μ g protein in RIPA buffer). Detected by chemiluminescence.