



SZABO SCANDIC

Part of Europa Biosite

Produktinformation



Forschungsprodukte & Biochemikalien



Zellkultur & Verbrauchsmaterial



Diagnostik & molekulare Diagnostik



Laborgeräte & Service

Weitere Information auf den folgenden Seiten!
See the following pages for more information!



Lieferung & Zahlungsart

siehe unsere [Liefer- und Versandbedingungen](#)

Zuschläge

- Mindermengenzuschlag
- Trockeneiszuschlag
- Gefahrgutzuschlag
- Expressversand

SZABO-SCANDIC HandelsgmbH

Quellenstraße 110, A-1100 Wien

T. +43(0)1 489 3961-0

F. +43(0)1 489 3961-7

mail@szabo-scandic.com

www.szabo-scandic.com

[linkedin.com/company/szaboscandic](https://www.linkedin.com/company/szaboscandic) 



UK Office

Everest Biotech Ltd

Cherwell Innovation Centre
77 Heyford Park
Upper Heyford
Oxfordshire
OX25 5HD
UK

Enquiries:

info@everestbiotech.com

Sales:

sales@everestbiotech.com

Tech support:

support@everestbiotech.com

Tel: +44 (0)1869 238326

Fax: +44 (0)1869 238327

US Office

Everest Biotech c/o Abcore

405 Maple Street, Suite A106
Ramona,
CA 92065
USA

Inquiries:

info@everestbiotech.com

Sales:

usasales@everestbiotech.com

Tech support:

support@everestbiotech.com

Tel: 888-320-4628 (toll-free)

Fax: 888-841-9041

www.everestbiotech.com

**Research Use Only. Not for
diagnostic or therapeutic use.**

EB06767 - Goat Anti-CCKBR Antibody

Size: 100µg specific antibody in 200µl



Target Protein

Principal Names: CCKBR, cholecystokinin B receptor, HGNC:1571, CCK-B, GASR, CCK2 receptor, cholecystokinin-B receptor/gastrin receptor, gastrin receptor, gastrin\cholecystokinin brain receptor, CCK2R

Official Symbol: CCKBR

Accession Number(s): NP_795344.1

Human GeneID(s): [887](#)

Non-Human GeneID(s): 12426 (mouse), 25706 (rat)

Immunogen

Peptide with sequence C-FDGSDSDSQRVRNQ, from the internal region of the protein sequence according to NP_795344.1.

Please note the [peptide](#) is available for sale.

Purification and Storage

Purified from goat serum by ammonium sulphate precipitation followed by antigen affinity chromatography using the immunizing peptide.

Supplied at 0.5 mg/ml in Tris saline, 0.02% sodium azide, pH7.3 with 0.5% bovine serum albumin.

Aliquot and store at -20°C. Minimize freezing and thawing.

Applications Tested

Peptide ELISA: antibody detection limit dilution 1:32000.

Western blot: Approx 48-50kDa band observed in Mouse Pancreas lysates (calculated MW of 49.2kDa according to Mouse NP_031653.1) Recommended concentration: 0.3-1µg/ml. Primary incubation 1 hour at room temperature.

IHC: Paraffin embedded Human Pancreas. Recommended concentration: 4-6µg/ml.

Species Reactivity

Tested: Human, Mouse

Expected from sequence similarity: Human, Mouse, Rat, Cow

Specific References

This antibody has been successfully used in IF and IHC on Human:

Yoko Sato, Shinichi Ban, Yasumi Katayama, Takashi Mitsui

Unique membranous gastrin receptor expression of parietal cells and its distribution pattern in the gastric oxyntic mucosa and fundic gland polyps

Hum Pathol. 2022 Apr 14;S0046-8177(22)00080-6.

PMID: 35430166

This antibody (previous batch) has been successfully used in IF on Rat:

Télez N, Montanya E

Gastrin induces ductal cell dedifferentiation and β-cell neogenesis after 90% pancreatectomy.

J Endocrinol. 2014 Oct;223(1):67-78

PMID: 25122000

This antibody (previous batch) has been successfully used in IHC on Human:

Quattrone A, Dewaele B, Wozniak A, Bauters M, Vanspauwen V, Floris G, Schöffski P, Chibon F, Coindre JM, Sciot R, Debiec-Rychter M.

Promoting role of cholecystokinin 2 receptor (CCK2R) in gastrointestinal stromal tumours pathogenesis.

J Pathol. 2012 Jul 11. doi: 10.1002/path.4071.

PMID: 22786615

This antibody (previous batch) has been successfully used in ICC/IF in Rat:

El-Kouhen K, Morisset J.

Control of somatostatin (SS) secretion by CCK-1 and CCK-2 receptors' occupation in RIN-14B cells, a rat pancreatic islet cell line.

Pancreas. 2010 Mar;39(2):127-34.

PMID: 19959964

This antibody (previous batch) has been successfully used in ICC/IF on Rat:

Berna MJ, Seiz O, Nast JF, Benten D, Bläker M, Koch J, Lohse AW, Pace A.

CCK1 and CCK2 receptors are expressed on pancreatic stellate cells and induce collagen production.

J Biol Chem. 2010 Dec 10;285(50):38905-14.

PMID: 20843811

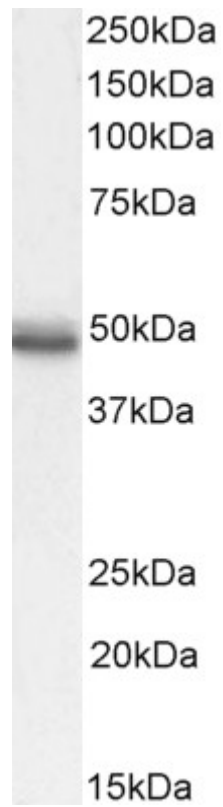
This antibody (previous batch) has been successfully used in Western blot on Rat:

El-Kouhen K, Morisset J.

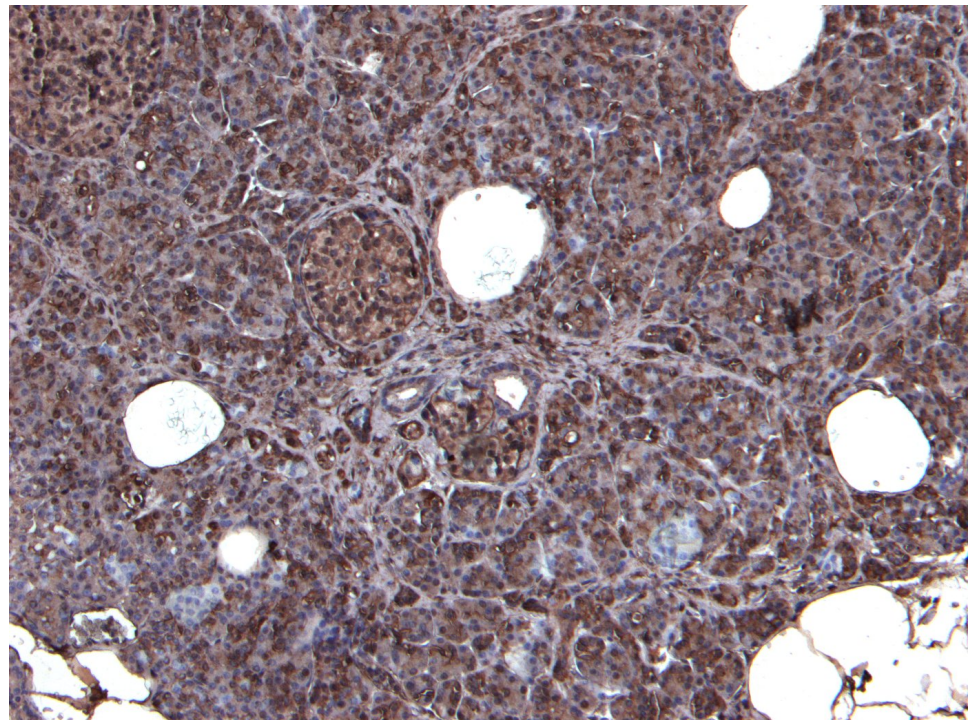
Cholecystokinin and Somatostatin Negatively Affect Growth of the Somatostatin-RIN-14B Cells.

Int J Endocrinol. 2009;2009:875167.

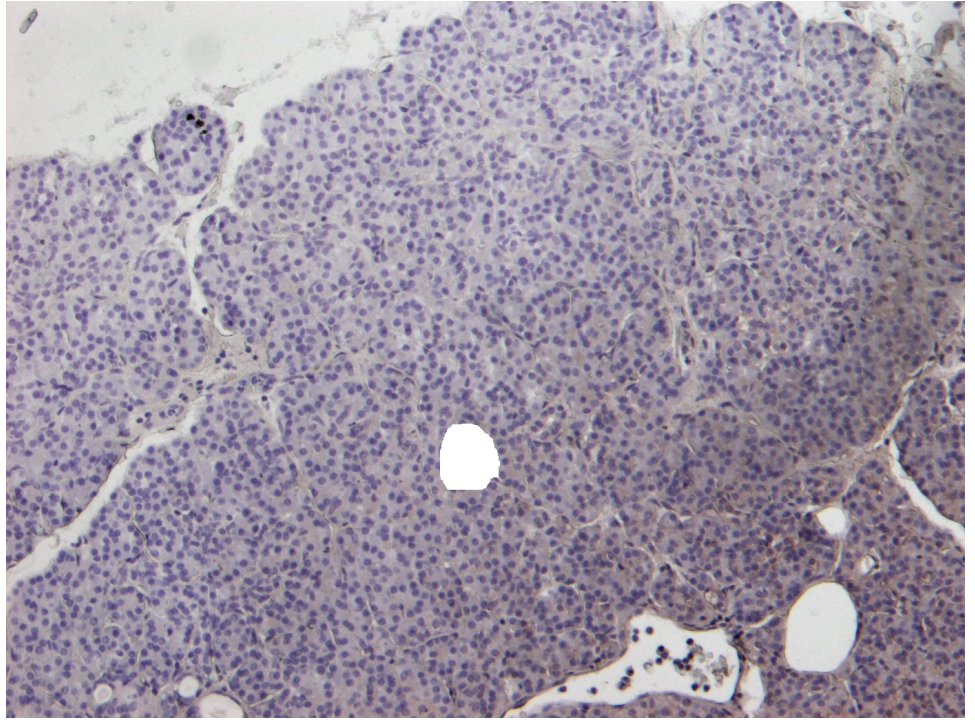
PMID: 20011057



EB06767 (0.5 μ g/ml) staining of Mouse Pancreas lysate (35 μ g protein in RIPA buffer). Detected by chemiluminescence.



EB06767 (6 μ g/ml) staining of paraffin embedded Human Pancreas. Heat induced antigen retrieval with citrate buffer pH 6, HRP-staining.



EB06767 Negative Control showing staining of paraffin embedded Human Pancreas, with no primary antibody.