



SZABO SCANDIC

Part of Europa Biosite

Produktinformation



Forschungsprodukte & Biochemikalien



Zellkultur & Verbrauchsmaterial



Diagnostik & molekulare Diagnostik



Laborgeräte & Service

Weitere Information auf den folgenden Seiten!
See the following pages for more information!



Lieferung & Zahlungsart

siehe unsere [Liefer- und Versandbedingungen](#)

Zuschläge

- Mindermengenzuschlag
- Trockeneiszuschlag
- Gefahrgutzuschlag
- Expressversand

SZABO-SCANDIC HandelsgmbH

Quellenstraße 110, A-1100 Wien

T. +43(0)1 489 3961-0

F. +43(0)1 489 3961-7

mail@szabo-scandic.com

www.szabo-scandic.com

[linkedin.com/company/szaboscandic](https://www.linkedin.com/company/szaboscandic) 



UK Office

Everest Biotech Ltd

Cherwell Innovation Centre
77 Heyford Park
Upper Heyford
Oxfordshire
OX25 5HD
UK

Enquiries:

info@everestbiotech.com

Sales:

sales@everestbiotech.com

Tech support:

support@everestbiotech.com

Tel: +44 (0)1869 238326

Fax: +44 (0)1869 238327

US Office

Everest Biotech c/o Abcore

405 Maple Street, Suite A106
Ramona,
CA 92065
USA

Inquiries:

info@everestbiotech.com

Sales:

usasales@everestbiotech.com

Tech support:

support@everestbiotech.com

Tel: 888-320-4628 (toll-free)

Fax: 888-841-9041

www.everestbiotech.com

**Research Use Only. Not for
diagnostic or therapeutic use.**

EB06769 - Goat Anti-Neuropeptide Y receptor Y5 Antibody

Size: 100µg specific antibody in 200µl



Target Protein

Principal Names: neuropeptide Y receptor Y5, HGNC:7958, NPY5R, NPYR5, NPY5-R, NPY-Y5 receptor, NPYY5-R, Y5 receptor

Official Symbol: NPY5R

Accession Number(s): NP_006165.1

Human GeneID(s): [4889](#)

Non-Human GeneID(s): 18168 (mouse), 25340 (rat)

Immunogen

Peptide with sequence C-GLSNKENRLEEN, from the internal region of the protein sequence according to NP_006165.1.

Please note the [peptide](#) is available for sale.

Purification and Storage

Purified from goat serum by ammonium sulphate precipitation followed by antigen affinity chromatography using the immunizing peptide.

Supplied at 0.5 mg/ml in Tris saline, 0.02% sodium azide, pH7.3 with 0.5% bovine serum albumin.

Aliquot and store at -20°C. Minimize freezing and thawing.

Applications Tested

Peptide ELISA: antibody detection limit dilution 1:32000.

Western blot: Approx 50kDa band observed in Human Brain, Breast and Duodenum lysates (calculated MW of 50.7kDa according to NP_006165.1). Recommended concentration: 0.3-1µg/ml. Primary incubation was 1 hour. This antibody has been successfully used in WB on CHO-K1 cells: PMID: 30503694. This antibody has been successfully used in WB on Human: PMID: 28413811 and 20332211.

IHC: In paraffin embedded Human Intestine shows staining of ganglion cells. Recommended concentration, 4-6µg/ml.

Immunoprecipitation: Customer feedback showed specific results when this product was used in IP. This antibody has been successfully used in IP: PMID: 30503694.

Species Reactivity

Tested: Human, Hamster

Expected from sequence similarity: Human, Mouse, Rat, Dog

Specific References

This antibody has been successfully used in the following paper:

Congyi Lu et al.

Hypoxia-activated neuropeptide Y/Y5 receptor/RhoA pathway triggers chromosomal instability and bone metastasis in Ewing sarcoma.

Nat Commun. 2022 Apr 28;13(1):2323.

PMID: 35484119

This antibody has been successfully used in WB on Human:

Nouran Abualsaud, Lindsay Caprio, Susana Galli, Ewa Krawczyk, Lamia Alamri, Shiya Zhu, G Ian Kitlinska

Neuropeptide Y/Y5 Receptor Pathway Stimulates Neuroblastoma Cell Motility Through

RhoA Activation

Front Cell Dev Biol. 2021 Feb 17;8:627090.

PMID: 33681186

This antibody has been successfully used in WB and IP on CHO-K1 cells:

Magdalena Czarneckaa, Congyi Lua,b, Jennifer Ponsa, Induja Maheswarana, Pawel Ciborowskic, Lihua Zhangd, Amrita Cheemad, Joanna Kitlinskaa

Neuropeptide Y receptor interactions regulate its mitogenic activity

Neuropeptides. 2019 Feb;73:11-24.

PMID: 30503694

This antibody has been successfully used in WB on Human:

Czarnecka M, Kitlinska J.

Cell Surface Protein Detection to Assess Receptor Internalization.

Bio Protoc. 2016 Oct 20;6(20)

PMID: 28413811

This antibody has been successfully used in WB on Human:

Sheriff S, Ali M, Yahya A, Haider KH, Balasubramaniam A, Amlal H.

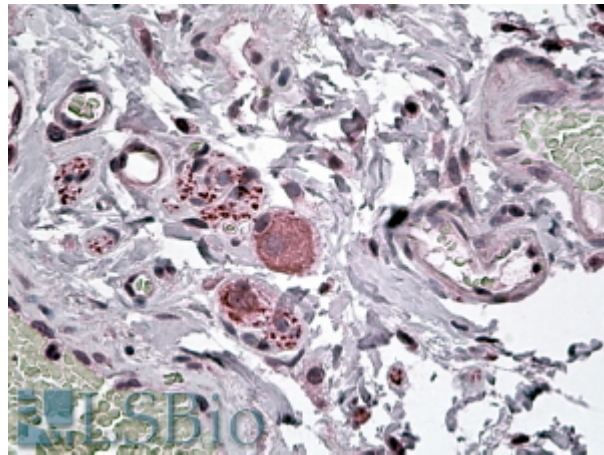
Neuropeptide Y Y5 receptor promotes cell growth through extracellular signal-regulated kinase signaling and cyclic AMP inhibition in a human breast cancer cell line.

Mol Cancer Res. 2010 Apr;8(4):604-14.

PMID: 20332211



EB06769 (0.3 μ g/ml) staining of Human Brain lysate (35 μ g protein in RIPA buffer). Detected by chemiluminescence.



EB06769 (3.8 μ g/ml) staining of paraffin embedded Human Intestine. Steamed antigen retrieval with citrate buffer Ph 6, AP-staining.