



SZABO SCANDIC

Part of Europa Biosite

Produktinformation



Forschungsprodukte & Biochemikalien



Zellkultur & Verbrauchsmaterial



Diagnostik & molekulare Diagnostik



Laborgeräte & Service

Weitere Information auf den folgenden Seiten!
See the following pages for more information!



Lieferung & Zahlungsart

siehe unsere [Liefer- und Versandbedingungen](#)

Zuschläge

- Mindermengenzuschlag
- Trockeneiszuschlag
- Gefahrgutzuschlag
- Expressversand

SZABO-SCANDIC HandelsgmbH

Quellenstraße 110, A-1100 Wien

T. +43(0)1 489 3961-0

F. +43(0)1 489 3961-7

mail@szabo-scandic.com

www.szabo-scandic.com

[linkedin.com/company/szaboscandic](https://www.linkedin.com/company/szaboscandic) 



UK Office

Everest Biotech Ltd

Cherwell Innovation Centre
77 Heyford Park
Upper Heyford
Oxfordshire
OX25 5HD
UK

Enquiries:

info@everestbiotech.com

Sales:

sales@everestbiotech.com

Tech support:

support@everestbiotech.com

Tel: +44 (0)1869 238326

Fax: +44 (0)1869 238327

US Office

Everest Biotech c/o Abcore

405 Maple Street, Suite A106
Ramona,
CA 92065
USA

Inquiries:

info@everestbiotech.com

Sales:

usasales@everestbiotech.com

Tech support:

support@everestbiotech.com

Tel: 888-320-4628 (toll-free)

Fax: 888-841-9041

www.everestbiotech.com

**Research Use Only. Not for
diagnostic or therapeutic use.**

EB06776 - Goat Anti-Parvalbumin Antibody

Size: 100µg specific antibody in 200µl



Target Protein

Principal Names: parvalbumin, HGNC:9704, PVALB, D22S749, parvalbumin alpha, MGC116759

Official Symbol: PVALB

Accession Number(s): NP_002845.1

Human GeneID(s): [5816](#)

Important Comments: Reported variants represent identical protein: NP_002845.1, NP_001302461.1

Immunogen

Peptide with sequence C-GVDEFSTLVAES, from the C Terminus of the protein sequence according to NP_002845.1.

Please note the [peptide](#) is available for sale.

Purification and Storage

Purified from goat serum by ammonium sulphate precipitation followed by antigen affinity chromatography using the immunizing peptide.

Supplied at 0.5 mg/ml in Tris saline, 0.02% sodium azide, pH7.3 with 0.5% bovine serum albumin.

Aliquot and store at -20°C. Minimize freezing and thawing.

Applications Tested

Peptide ELISA: antibody detection limit dilution 1:64000.

Western blot: Approx 15kDa band observed in Human Cerebellum lysates and approx 16kDa in Rat Brain lysates (calculated MW of 12.1kDa according to Human NP_002845.1 and 11.9kDa according to Rat NP_071944.1). These molecular weights are observed by other sources and were successfully blocked by incubation with the immunizing peptide. Recommended concentration: 0.01-0.3µg/ml. Primary incubation 1 hour at room temperature.

Flow Cytometry: Flow cytometric analysis of Kelly cells. Recommended concentration: 10ug/ml.

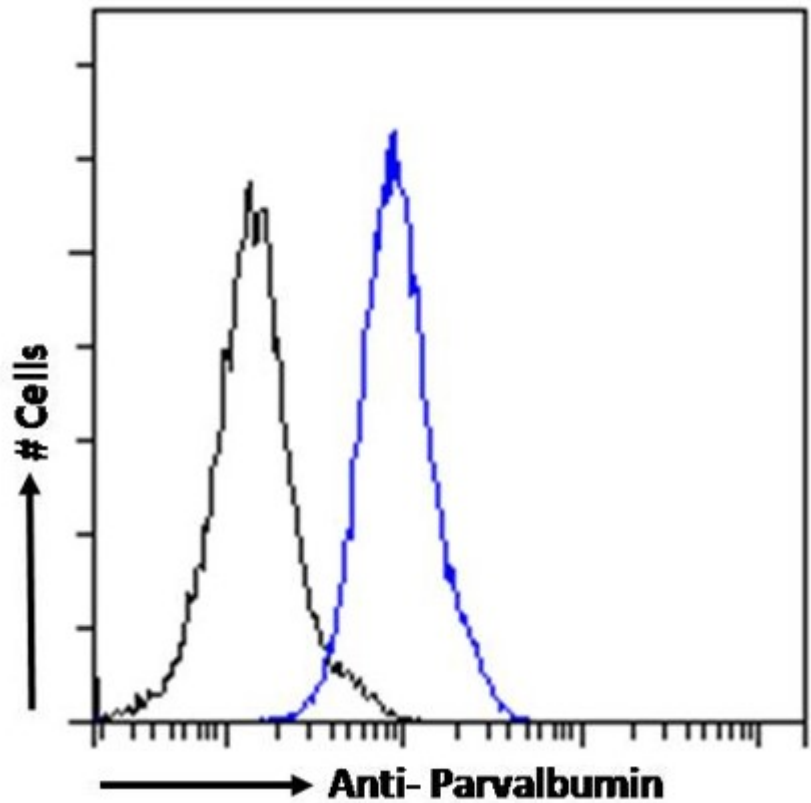
Species Reactivity

Tested: Human, Rat

Expected from sequence similarity: Human, Rat



EB06776 (0.01µg/ml) staining of Human Cerebellum (A) lysate + peptide (B) and (0.3ug/ml) Rat Brain (C) lysate + peptide (D) (35µg protein in RIPA buffer). Detected by chemiluminescence.



EB06776 Flow cytometric analysis of paraformaldehyde fixed Kelly cells (blue line), permeabilized with 0.5% Triton. Primary incubation 1hr (10ug/ml) followed by Alexa Fluor 488 secondary antibody (1ug/ml). IgG control: Unimmunized goat IgG (black line) followed by Alexa Fluor 488 secondary antibody.