



SZABO SCANDIC

Part of Europa Biosite

Produktinformation



Forschungsprodukte & Biochemikalien



Zellkultur & Verbrauchsmaterial



Diagnostik & molekulare Diagnostik



Laborgeräte & Service

Weitere Information auf den folgenden Seiten!
See the following pages for more information!



Lieferung & Zahlungsart

siehe unsere [Liefer- und Versandbedingungen](#)

Zuschläge

- Mindermengenzuschlag
- Trockeneiszuschlag
- Gefahrgutzuschlag
- Expressversand

SZABO-SCANDIC HandelsgmbH

Quellenstraße 110, A-1100 Wien

T. +43(0)1 489 3961-0

F. +43(0)1 489 3961-7

mail@szabo-scandic.com

www.szabo-scandic.com

[linkedin.com/company/szaboscandic](https://www.linkedin.com/company/szaboscandic) 



UK Office

Everest Biotech Ltd

Cherwell Innovation Centre
77 Heyford Park
Upper Heyford
Oxfordshire
OX25 5HD
UK

Enquiries:

info@everestbiotech.com

Sales:

sales@everestbiotech.com

Tech support:

support@everestbiotech.com

Tel: +44 (0)1869 238326

Fax: +44 (0)1869 238327

US Office

Everest Biotech c/o Abcore

405 Maple Street, Suite A106
Ramona,
CA 92065
USA

Inquiries:

info@everestbiotech.com

Sales:

usasales@everestbiotech.com

Tech support:

support@everestbiotech.com

Tel: 888-320-4628 (toll-free)

Fax: 888-841-9041

www.everestbiotech.com

**Research Use Only. Not for
diagnostic or therapeutic use.**

EB06798 - Goat Anti-Aminopeptidase A Antibody

Size: 100µg specific antibody in 200µl



Target Protein

Principal Names: aminopeptidase A, ENPEP, glutamyl aminopeptidase (aminopeptidase A), HGNC:3355, APA, gp160, CD249, glutamyl aminopeptidase

Official Symbol: ENPEP

Accession Number(s): NP_001968.3

Human GeneID(s): [2028](#)

Non-Human GeneID(s): 13809 (mouse)

Immunogen

Peptide with sequence C-EQYQKTSLAQEKEK, from the internal region of the protein sequence according to NP_001968.3.

Please note the [peptide](#) is available for sale.

Purification and Storage

Purified from goat serum by ammonium sulphate precipitation followed by antigen affinity chromatography using the immunizing peptide.

Supplied at 0.5 mg/ml in Tris saline, 0.02% sodium azide, pH7.3 with 0.5% bovine serum albumin.

Aliquot and store at -20°C. Minimize freezing and thawing.

Applications Tested

Peptide ELISA: antibody detection limit dilution 1:64000.

Western blot: Approx 170kDa band observed in Human Brain and Testis lysates (calculated MW of 109kDa according to NP_001968.2). Primary incubation was for 1 hour. The observed molecular weight corresponds to earlier findings in literature with different antibodies (Ando et al, J Clin Endocrinol Metab. 2002 May;87(5):2303-9; PMID: 11994381). Recommended concentration: 1-3µg/ml. This antibody has been successfully used in WB on Rat: PMID: 28399178 and 25470983.

IHC: In paraffin embedded Human Kidney shows staining of basement membrane and the mesangium in the glomerulus. Recommended concentration: 3-5µg/ml.

Species Reactivity

Tested: Human, Rat

Expected from sequence similarity: Human, Mouse, Rat, Dog, Pig, Cow

Specific References

This antibody has been successfully used in WB on Rat:

Quesada A, Segarra AB, Montoro-Molina S, de Gracia MD, Osuna A, O'Valle F, Gómez-Guzmán M, Vargas F, Wangensteen R.

Glutamyl aminopeptidase in microvesicular and exosomal fractions of urine is related with renal dysfunction in cisplatin-treated rats.

PLoS One. 2017 Apr 11;12(4):e0175462

PMID: 28399178

This antibody has been successfully used in WB on Rat:

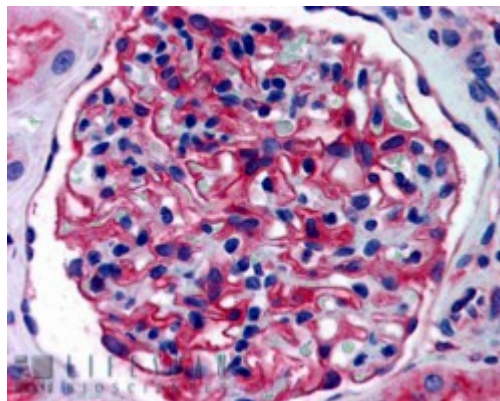
Montoro-Molina S, Quesada A, Zafra-Ruiz PV, O'Valle F, Vargas F, de Gracia Mdel C, Osuna A, Wangensteen R

Immunological detection of glutamyl aminopeptidase in urine samples from cisplatin-treated rats. Proteomics Clin Appl. 2015 Jun;9(5-6):630-5.

PMID: 25470983



EB06798 staining (1 μ g/ml) of Human Testis lysate (RIPA buffer, 30 μ g total protein per lane). Detected by chemiluminescence.



EB06798 (3.75 μ g/ml) staining of paraffin embedded Human Kidney. Steamed antigen retrieval with citrate buffer pH 6, AP-staining.