



SZABO SCANDIC

Part of Europa Biosite

Produktinformation



Forschungsprodukte & Biochemikalien



Zellkultur & Verbrauchsmaterial



Diagnostik & molekulare Diagnostik



Laborgeräte & Service

Weitere Information auf den folgenden Seiten!
See the following pages for more information!



Lieferung & Zahlungsart

siehe unsere [Liefer- und Versandbedingungen](#)

Zuschläge

- Mindermengenzuschlag
- Trockeneiszuschlag
- Gefahrgutzuschlag
- Expressversand

SZABO-SCANDIC HandelsgmbH

Quellenstraße 110, A-1100 Wien

T. +43(0)1 489 3961-0

F. +43(0)1 489 3961-7

mail@szabo-scandic.com

www.szabo-scandic.com

[linkedin.com/company/szaboscandic](https://www.linkedin.com/company/szaboscandic) 



UK Office

Everest Biotech Ltd

Cherwell Innovation Centre
77 Heyford Park
Upper Heyford
Oxfordshire
OX25 5HD
UK

Enquiries:

info@everestbiotech.com

Sales:

sales@everestbiotech.com

Tech support:

support@everestbiotech.com

Tel: +44 (0)1869 238326

Fax: +44 (0)1869 238327

US Office

Everest Biotech c/o Abcore

405 Maple Street, Suite A106
Ramona,
CA 92065
USA

Inquiries:

info@everestbiotech.com

Sales:

usasales@everestbiotech.com

Tech support:

support@everestbiotech.com

Tel: 888-320-4628 (toll-free)

Fax: 888-841-9041

www.everestbiotech.com

**Research Use Only. Not for
diagnostic or therapeutic use.**

EB06826 - Goat Anti-SH2D1A / SAP Antibody

Size: 100µg specific antibody in 200µl



Target Protein

Principal Names: SH2D1A, SAP, SH2 domain protein 1A, Duncan's disease (lymphoproliferative syndrome), HGNC:10820, DSHP, EBVS, IMD5, LYP, MTCP1, XLP, XLPD, SH2 domain protein 1A, SLAM (signaling lymphocyte activation molecule) associated protein, RP5-1052M9.3, FLJ18687, FLJ92177, SLAM-associated protein, T cell signal transduction molecule SAP, signaling lymphocyte activation molecule-associated protein

Official Symbol: SH2D1A

Accession Number(s): NP_002342.1; NP_001108409.1

Human GeneID(s): [4068](#)

Immunogen

Peptide with sequence C-HKRYFRKIKN, from the internal region of the protein sequence according to NP_002342.1; NP_001108409.1.

Please note the [peptide](#) is available for sale.

Purification and Storage

Purified from goat serum by ammonium sulphate precipitation followed by antigen affinity chromatography using the immunizing peptide.

Supplied at 0.5 mg/ml in Tris saline, 0.02% sodium azide, pH7.3 with 0.5% bovine serum albumin.

Aliquot and store at -20°C. Minimize freezing and thawing.

Applications Tested

Peptide ELISA: antibody detection limit dilution 1:16000.

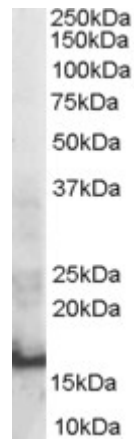
Western blot: Approx 16kDa band observed in Human Thymus lysates (calculated MW of 14.2kDa according to NP_002342.1). In transfected HEK293 transiently expressing SH2D1A a band of approx. 16kDa is observed. This band is not observed in the non-transfected HEK293. Recommended concentration: 0.3-1µg/ml.

Immunoprecipitation: This antibody was deemed fit for IP under native conditions (observations from anonymous customer).

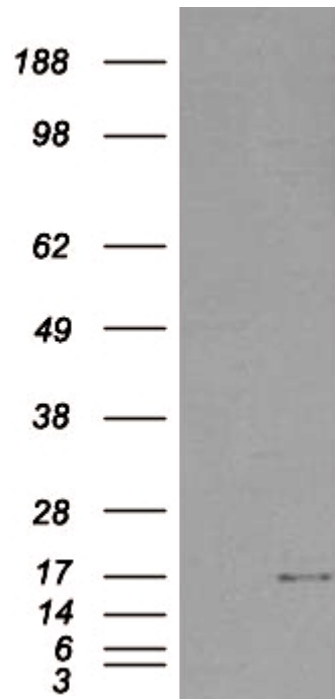
Species Reactivity

Tested: Human

Expected from sequence similarity: Human, Mouse, Rat



EB06826 staining (0.3µg/ml) of Human Thymus lysate (RIPA buffer, 30µg total protein per lane). Primary incubated for 1 hour. Detected by western blot using chemiluminescence.



HEK293 overexpressing SH2D1A (RC204723) and probed with EB06826 (mock transfection in first lane), tested by Origene.