



SZABO SCANDIC

Part of Europa Biosite

Produktinformation



Forschungsprodukte & Biochemikalien



Zellkultur & Verbrauchsmaterial



Diagnostik & molekulare Diagnostik



Laborgeräte & Service

Weitere Information auf den folgenden Seiten!
See the following pages for more information!



Lieferung & Zahlungsart

siehe unsere [Liefer- und Versandbedingungen](#)

Zuschläge

- Mindermengenzuschlag
- Trockeneiszuschlag
- Gefahrgutzuschlag
- Expressversand

SZABO-SCANDIC HandelsgmbH

Quellenstraße 110, A-1100 Wien

T. +43(0)1 489 3961-0

F. +43(0)1 489 3961-7

mail@szabo-scandic.com

www.szabo-scandic.com

[linkedin.com/company/szaboscandic](https://www.linkedin.com/company/szaboscandic) 



UK Office

Everest Biotech Ltd

Cherwell Innovation Centre
77 Heyford Park
Upper Heyford
Oxfordshire
OX25 5HD
UK

Enquiries:

info@everestbiotech.com

Sales:

sales@everestbiotech.com

Tech support:

support@everestbiotech.com

Tel: +44 (0)1869 238326

Fax: +44 (0)1869 238327

US Office

Everest Biotech c/o Abcore

405 Maple Street, Suite A106
Ramona,
CA 92065
USA

Inquiries:

info@everestbiotech.com

Sales:

usasales@everestbiotech.com

Tech support:

support@everestbiotech.com

Tel: 888-320-4628 (toll-free)

Fax: 888-841-9041

www.everestbiotech.com

**Research Use Only. Not for
diagnostic or therapeutic use.**

EB06828 - Goat Anti-VPS11 Antibody

Size: 100µg specific antibody in 200µl



Target Protein

Principal Names: VPS11, vacuolar protein sorting 11 (yeast), HGNC:14583, END1, PEP5, RNF108, hVPS11, vacuolar protein sorting 11 (yeast homolog), vacuolar protein sorting protein 11, vacuolar protein sorting 11 homolog (S. cerevisiae)

Official Symbol: VPS11

Accession Number(s): NP_068375.3

Human GeneID(s): [55823](#)

Non-Human GeneID(s): 71732 (mouse)

Immunogen

Peptide with sequence C-HALQEKDTQTKLE, from the internal region of the protein sequence according to NP_068375.3.

Please note the [peptide](#) is available for sale.

Purification and Storage

Purified from goat serum by ammonium sulphate precipitation followed by antigen affinity chromatography using the immunizing peptide.

Supplied at 0.5 mg/ml in Tris saline, 0.02% sodium azide, pH7.3 with 0.5% bovine serum albumin.

Aliquot and store at -20°C. Minimize freezing and thawing.

Applications Tested

Peptide ELISA: antibody detection limit dilution 1:32000.

Western blot: Preliminary experiments gave an approx 75kDa band in human duodenum, colon and placenta lysates after 0.3µg/ml antibody staining. Please note that currently we cannot find an explanation in the literature for the band we observe given the calculated size of 108kDa according to NP_068375.3. The 75kDa band was successfully blocked by incubation with the immunizing peptide.

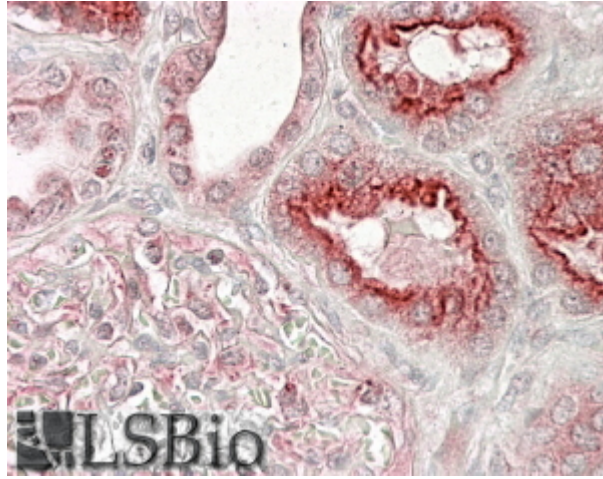
IHC: In paraffin embedded Human Kidney shows brushborder staining in PCT cells and Human Pancreas shows cytoplasm staining of beta cells in islets of Langerhans.

Recommended concentration, 3-6µg/ml.

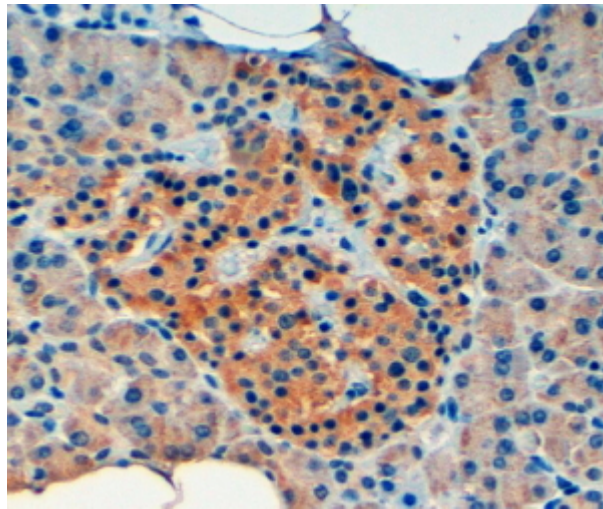
Species Reactivity

Tested: Human

Expected from sequence similarity: Human, Mouse, Rat, Dog, Cow



EB06828 (3.8µg/ml) staining of paraffin embedded Human Kidney-. Steamed antigen retrieval with citrate buffer pH 6, AP-staining.



EB06828 (4µg/ml) staining of paraffin embedded Human Pancreas. Steamed antigen retrieval with Tris/EDTA buffer pH 9, HRP-staining.