



SZABO SCANDIC

Part of Europa Biosite

Produktinformation



Forschungsprodukte & Biochemikalien



Zellkultur & Verbrauchsmaterial



Diagnostik & molekulare Diagnostik



Laborgeräte & Service

Weitere Information auf den folgenden Seiten!
See the following pages for more information!



Lieferung & Zahlungsart

siehe unsere [Liefer- und Versandbedingungen](#)

Zuschläge

- Mindermengenzuschlag
- Trockeneiszuschlag
- Gefahrgutzuschlag
- Expressversand

SZABO-SCANDIC HandelsgmbH

Quellenstraße 110, A-1100 Wien

T. +43(0)1 489 3961-0

F. +43(0)1 489 3961-7

mail@szabo-scandic.com

www.szabo-scandic.com

[linkedin.com/company/szaboscandic](https://www.linkedin.com/company/szaboscandic) 



UK Office

Everest Biotech Ltd

Cherwell Innovation Centre
77 Heyford Park
Upper Heyford
Oxfordshire
OX25 5HD
UK

Enquiries:

info@everestbiotech.com

Sales:

sales@everestbiotech.com

Tech support:

support@everestbiotech.com

Tel: +44 (0)1869 238326

Fax: +44 (0)1869 238327

US Office

Everest Biotech c/o Abcore

405 Maple Street, Suite A106
Ramona,
CA 92065
USA

Inquiries:

info@everestbiotech.com

Sales:

usasales@everestbiotech.com

Tech support:

support@everestbiotech.com

Tel: 888-320-4628 (toll-free)

Fax: 888-841-9041

www.everestbiotech.com

**Research Use Only. Not for
diagnostic or therapeutic use.**

EB06838 - Goat Anti-RAE1 Antibody

Size: 100µg specific antibody in 200µl



Target Protein

Principal Names: RAE1, RAE1 RNA export 1 homolog (S. pombe), HGNC:9828, FLJ30608, MIG14, MRNP41, Mnrp41, dJ481F12.3, dJ800J21.1, RAE1 (RNA export 1, S.pombe) homolog, homolog of yeast Rae1 (Bharathi) mRNA-associated protein of 41 kDa (Kraemer), mRNA export protein, mRNA-associated protein MRNP 41, mRNA-binding protein, 41-kD, migration-inducing gene 14, RP4-800J21.2, MGC117333, MGC126076, MGC126077, OTTHUMP00000166110

Official Symbol: RAE1

Accession Number(s): NP_003601.1; NP_001015885.1

Human GeneID(s): [8480](#)

Important Comments: NP_003601 and NP_001015885 represent identical proteins.

Immunogen

Peptide with sequence C-NAAEELKPRNKK, from the C Terminus of the protein sequence according to NP_003601.1; NP_001015885.1.

Please note the [peptide](#) is available for sale.

Purification and Storage

Purified from goat serum by ammonium sulphate precipitation followed by antigen affinity chromatography using the immunizing peptide.

Supplied at 0.5 mg/ml in Tris saline, 0.02% sodium azide, pH7.3 with 0.5% bovine serum albumin.

Aliquot and store at -20°C. Minimize freezing and thawing.

Applications Tested

Peptide ELISA: antibody detection limit dilution 1:64000.

Western blot: Approx 40kDa band observed in lysates cell lines HepG2, HeLa, Jurkat and MCF7 (calculated MW of 41.0kDa according to NP_003601.1). Recommended concentration: 0.1-0.3µg/ml.

IHC: In paraffin embedded Human Brain Cortex shows staining of neuronal cell bodies.

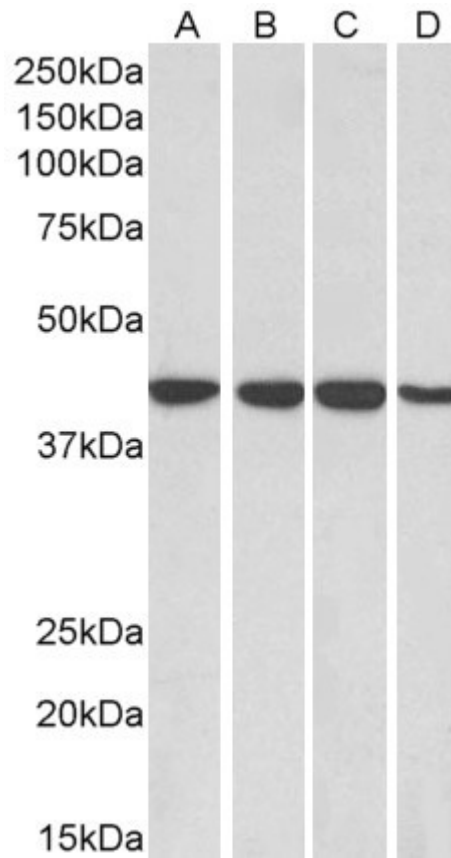
Recommended concentration: 3-6µg/ml. Paraffin embedded Human Heart.

Recommended concentration: 3.75µg/ml.

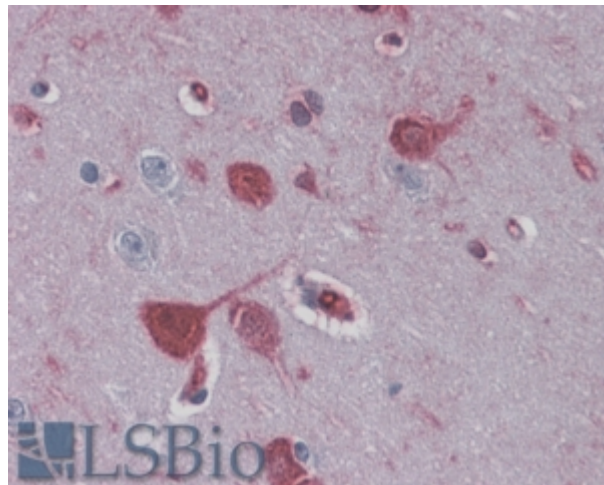
Species Reactivity

Tested: Human

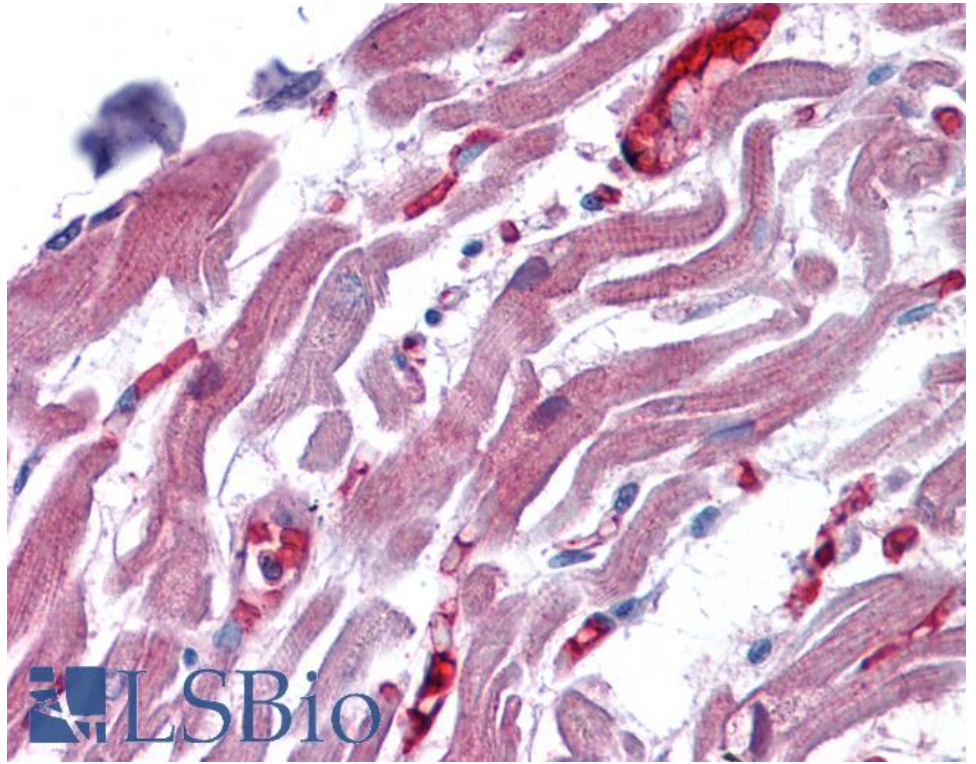
Expected from sequence similarity: Human, Mouse, Rat, Pig, Dog, Cow



EB06838 (0.1 μ g/ml) staining of HepG2 (A), HeLa (B), Jurkat (C) and MCF7 (D) lysates (35 μ g protein in RIPA buffer). Primary incubation was 1 hour. Detected by chemiluminescence.



EB06838 (3.8 μ g/ml) staining of paraffin embedded Human Cortex. Steamed antigen retrieval with citrate buffer pH 6, AP-staining.



EB06838 (3.75µg/ml) staining of paraffin embedded Human Heart. Steamed antigen retrieval with citrate buffer pH 6, AP-staining.