



SZABO SCANDIC

Part of Europa Biosite

Produktinformation



Forschungsprodukte & Biochemikalien



Zellkultur & Verbrauchsmaterial



Diagnostik & molekulare Diagnostik



Laborgeräte & Service

Weitere Information auf den folgenden Seiten!
See the following pages for more information!



Lieferung & Zahlungsart

siehe unsere [Liefer- und Versandbedingungen](#)

Zuschläge

- Mindermengenzuschlag
- Trockeneiszuschlag
- Gefahrgutzuschlag
- Expressversand

SZABO-SCANDIC HandelsgmbH

Quellenstraße 110, A-1100 Wien

T. +43(0)1 489 3961-0

F. +43(0)1 489 3961-7

mail@szabo-scandic.com

www.szabo-scandic.com

[linkedin.com/company/szaboscandic](https://www.linkedin.com/company/szaboscandic) 



UK Office

Everest Biotech Ltd

Cherwell Innovation Centre
77 Heyford Park
Upper Heyford
Oxfordshire
OX25 5HD
UK

Enquiries:

info@everestbiotech.com

Sales:

sales@everestbiotech.com

Tech support:

support@everestbiotech.com

Tel: +44 (0)1869 238326

Fax: +44 (0)1869 238327

US Office

Everest Biotech c/o Abcore

405 Maple Street, Suite A106
Ramona,
CA 92065
USA

Inquiries:

info@everestbiotech.com

Sales:

usasales@everestbiotech.com

Tech support:

support@everestbiotech.com

Tel: 888-320-4628 (toll-free)

Fax: 888-841-9041

www.everestbiotech.com

**Research Use Only. Not for
diagnostic or therapeutic use.**

EB06839 - Goat Anti-NKG2D / KLRK1 Antibody

Size: 100µg specific antibody in 200µl



Target Protein

Principal Names: KLRK1, NKG2-D, killer cell lectin-like receptor subfamily K, member 1, HGNC:18788, D12S2489E, KLR, NK cell receptor D, NKG2-D type II integral membrane protein, CD314, D12S2489E, FLJ17759, FLJ75772, NKG2D

Official Symbol: KLRK1

Accession Number(s): NP_031386.2

Human GeneID(s): [22914](#)

Immunogen

Peptide with sequence C-KVYSKEDQDLLK, from the internal region of the protein sequence according to NP_031386.2.

Please note the [peptide](#) is available for sale.

Purification and Storage

Purified from goat serum by ammonium sulphate precipitation followed by antigen affinity chromatography using the immunizing peptide.

Supplied at 0.5 mg/ml in Tris saline, 0.02% sodium azide, pH7.3 with 0.5% bovine serum albumin.

Aliquot and store at -20°C. Minimize freezing and thawing.

Applications Tested

Peptide ELISA: antibody detection limit dilution 1:64000.

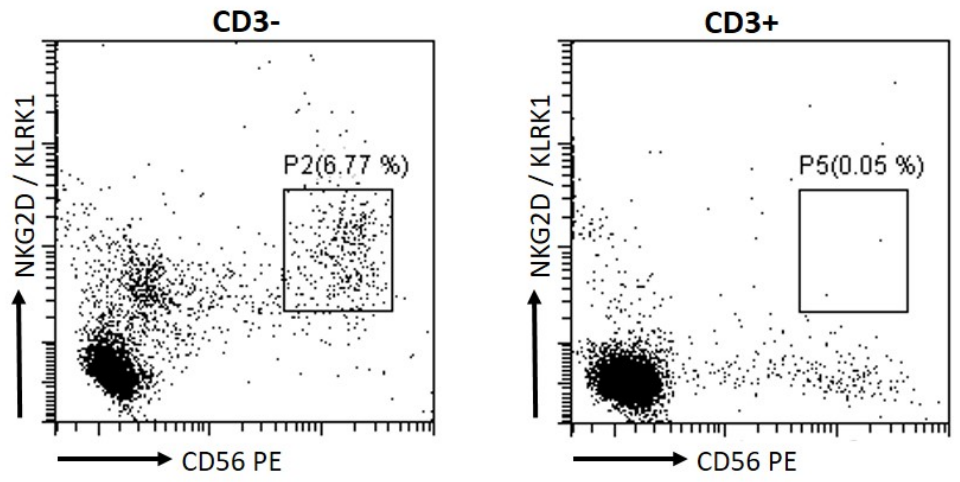
Western blot: Approx 36-37kDa band observed in lysates of cell line MOLT4 (calculated MW of 25.3kDa according to NP_031386.2). This molecular weight is routinely observed by other sources, and was successfully blocked by incubation with the immunising peptide. Recommended concentration: 0.1-0.5µg/ml. Primary incubated 1 hour at room temperature.

Flow Cytometry: Flow cytometric analysis showing the expression of NKG2D on a subset of CD56⁺CD3⁻ NK cells. Recommended concentration: 10ug/ml.

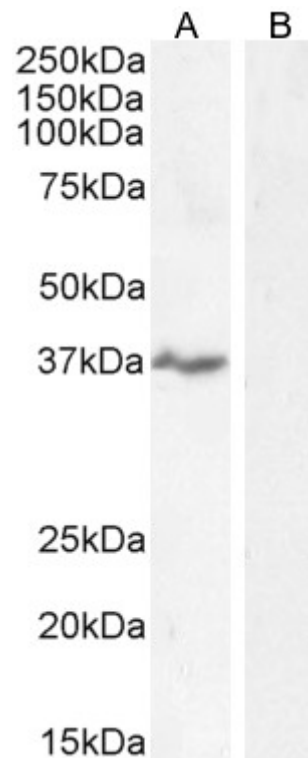
Species Reactivity

Tested: Human

Expected from sequence similarity: Human, Mouse, Rat



EB06839 Flow cytometric analysis of human peripheral blood monocytes. Primary incubation 30 minutes (10ug/ml) followed by Alexa Fluor 488 secondary antibody (1ug/ml).



EB06839 staining (0.5ug/ml) of MOLT-4 cell lysate (A) + peptide (B). (35µg protein in RIPA buffer). Detected by chemiluminescence.