



# SZABO SCANDIC

Part of Europa Biosite

## Produktinformation



Forschungsprodukte & Biochemikalien



Zellkultur & Verbrauchsmaterial



Diagnostik & molekulare Diagnostik



Laborgeräte & Service

Weitere Information auf den folgenden Seiten!  
See the following pages for more information!



### Lieferung & Zahlungsart

siehe unsere [Liefer- und Versandbedingungen](#)

### Zuschläge

- Mindermengenzuschlag
- Trockeneiszuschlag
- Gefahrgutzuschlag
- Expressversand

### SZABO-SCANDIC HandelsgmbH

Quellenstraße 110, A-1100 Wien

T. +43(0)1 489 3961-0

F. +43(0)1 489 3961-7

[mail@szabo-scandic.com](mailto:mail@szabo-scandic.com)

[www.szabo-scandic.com](http://www.szabo-scandic.com)

[linkedin.com/company/szaboscandic](https://www.linkedin.com/company/szaboscandic) 



## UK Office

### Everest Biotech Ltd

Cherwell Innovation Centre  
77 Heyford Park  
Upper Heyford  
Oxfordshire  
OX25 5HD  
UK

Enquiries:

[info@everestbiotech.com](mailto:info@everestbiotech.com)

Sales:

[sales@everestbiotech.com](mailto:sales@everestbiotech.com)

Tech support:

[support@everestbiotech.com](mailto:support@everestbiotech.com)

Tel: +44 (0)1869 238326

Fax: +44 (0)1869 238327

## US Office

### Everest Biotech c/o Abcore

405 Maple Street, Suite A106  
Ramona,  
CA 92065  
USA

Inquiries:

[info@everestbiotech.com](mailto:info@everestbiotech.com)

Sales:

[usasales@everestbiotech.com](mailto:usasales@everestbiotech.com)

Tech support:

[support@everestbiotech.com](mailto:support@everestbiotech.com)

Tel: 888-320-4628 (toll-free)

Fax: 888-841-9041

[www.everestbiotech.com](http://www.everestbiotech.com)

**Research Use Only. Not for  
diagnostic or therapeutic use.**

## EB06876 - Goat Anti-Ghrelin preproprotein Antibody

Size: 100µg specific antibody in 200µl



### Target Protein

**Principal Names:** GHRL, MTLRP, ghrelin, ghrelin precursor, motilin-related peptide, preproghrelin, ghrelin/obestatin prepropeptide, obestatin, ghrelin/obestatin preprohormone, OTTHUMP00000207794;, OTTHUMP00000207795, OTTHUMP00000207796, OTTHUMP00000207798, ghrelin, growth hormone secretagogue receptor ligand, ghrelin/obestatin

**Official Symbol:** GHRL

**Accession Number(s):** NP\_057446.1; NP\_001128413.1; NP\_001128416.1; NP\_001128417.1; NP\_001128418.1

**Human GenelD(s):** [51738](#)

**Important Comments:** This antibody is expected to recognise all reported isoforms.

### Immunogen

Peptide with sequence C-QDILWEEAKEAPADK, from the C Terminus of the protein sequence according to NP\_057446.1; NP\_001128413.1; NP\_001128416.1; NP\_001128417.1; NP\_001128418.1.

Please note the [peptide](#) is available for sale.

### Purification and Storage

Purified from goat serum by ammonium sulphate precipitation followed by antigen affinity chromatography using the immunizing peptide.

Supplied at 0.5 mg/ml in Tris saline, 0.02% sodium azide, pH7.3 with 0.5% bovine serum albumin.

Aliquot and store at -20°C. Minimize freezing and thawing.

### Applications Tested

**Peptide ELISA:** antibody detection limit dilution 1:8000.

**IHC:** In paraffin embedded Human Placenta shows staining of trophoblast cytoplasm.

Recommended concentration: 2-5µg/ml. Paraffin embedded Human Colon.

Recommended concentration: 2ug/ml.

### Species Reactivity

**Tested:** Human, Rat

**Expected from sequence similarity:** Human

### Specific Reference

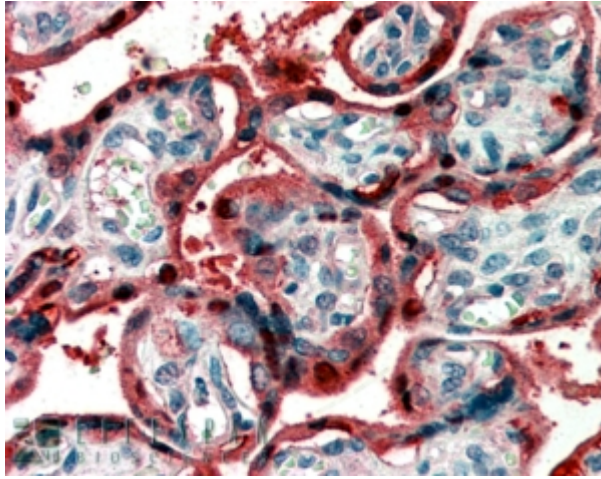
**This antibody has been successfully used in ICC on Rat:**

Stoyanova II, Wiertz RW, Rutten WL.

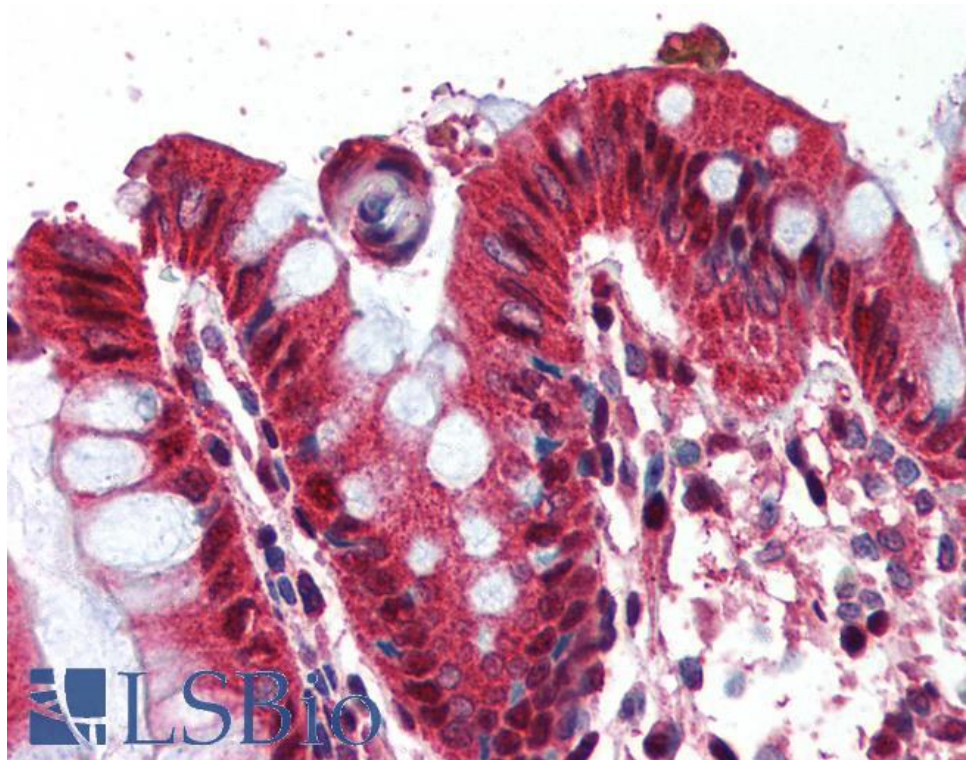
Time-dependent changes in ghrelin-immunoreactivity in dissociated neuronal cultures of the newborn rat neocortex.

Regul Pept. 2009 Nov 27;158(1-3):86-90.

PMID: 19540881



EB06876 (2µg/ml) staining of paraffin embedded Human Placenta. Steamed antigen retrieval with citrate buffer pH 6, AP-staining.



EB06876 (2µg/ml) staining of paraffin embedded Human Colon. Steamed antigen retrieval with citrate buffer pH 6, AP-staining.