



SZABO SCANDIC

Part of Europa Biosite

Produktinformation



Forschungsprodukte & Biochemikalien



Zellkultur & Verbrauchsmaterial



Diagnostik & molekulare Diagnostik



Laborgeräte & Service

Weitere Information auf den folgenden Seiten!
See the following pages for more information!



Lieferung & Zahlungsart

siehe unsere [Liefer- und Versandbedingungen](#)

Zuschläge

- Mindermengenzuschlag
- Trockeneiszuschlag
- Gefahrgutzuschlag
- Expressversand

SZABO-SCANDIC HandelsgmbH

Quellenstraße 110, A-1100 Wien

T. +43(0)1 489 3961-0

F. +43(0)1 489 3961-7

mail@szabo-scandic.com

www.szabo-scandic.com

[linkedin.com/company/szaboscandic](https://www.linkedin.com/company/szaboscandic) 



UK Office

Everest Biotech Ltd

Cherwell Innovation Centre
77 Heyford Park
Upper Heyford
Oxfordshire
OX25 5HD
UK

Enquiries:

info@everestbiotech.com

Sales:

sales@everestbiotech.com

Tech support:

support@everestbiotech.com

Tel: +44 (0)1869 238326

Fax: +44 (0)1869 238327

US Office

Everest Biotech c/o Abcore

405 Maple Street, Suite A106
Ramona,
CA 92065
USA

Inquiries:

info@everestbiotech.com

Sales:

usasales@everestbiotech.com

Tech support:

support@everestbiotech.com

Tel: 888-320-4628 (toll-free)

Fax: 888-841-9041

www.everestbiotech.com

**Research Use Only. Not for
diagnostic or therapeutic use.**

EB06881 - Goat Anti-STX1A / STX1B Antibody

Size: 100µg specific antibody in 200µl



Target Protein

Principal Names: STX1A, syntaxin 1A (brain) , HPC-1, STX1, p35-1, SYN1A, OTTHUMP00000174615, OTTHUMP00000174616, OTTHUMP00000174617, OTTHUMP00000174618, neuron-specific antigen HPC-1, syntaxin-1A, STX1B, syntaxin 1B, STX1B1, STX1B2, FP17469, OTTHUMP00000163224, syntaxin 1B1, syntaxin 1B2, syntaxin-1B, syntaxin-1B1, syntaxin-1B2

Official Symbol: STX1A / STX1B

Accession Number(s): NP_004594.1; NP_001159375.1; NP_443106.1

Human GeneID(s): [6804](#) , [112755](#)

Non-Human GeneID(s): 20907 (mouse), 116470 (rat)

Important Comments: Please note this product is expected to recognize the products of 2 different genes. STX1A (NP_004594.1 and NP_001159375.1) and STX1B (NP_443106.1).

Immunogen

Peptide with sequence KDRTQELRTAKD-C, from the N Terminus of the protein sequence according to NP_004594.1; NP_001159375.1; NP_443106.1.

Please note the [peptide](#) is available for sale.

Purification and Storage

Purified from goat serum by ammonium sulphate precipitation followed by antigen affinity chromatography using the immunizing peptide.

Supplied at 0.5 mg/ml in Tris saline, 0.02% sodium azide, pH7.3 with 0.5% bovine serum albumin.

Aliquot and store at -20°C. Minimize freezing and thawing.

Applications Tested

Peptide ELISA: antibody detection limit dilution 1:32000.

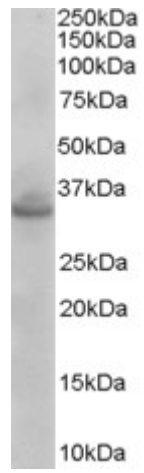
Western blot: Approx 35kDa band observed in Mouse Brain lysates (calculated MW of 33.0kDa according to NP_004594.1 and 33.2kDa according to NP_443106.1).

Recommended concentration: 0.01-0.03µg/ml.

Species Reactivity

Tested: Mouse

Expected from sequence similarity: Human, Mouse, Rat, Dog, Cow



EB06881 (0.003 μ g/ml) staining of Mouse Brain lysate (35 μ g protein in RIPA buffer). Primary incubation was 1 hour. Detected by chemiluminescence.