



SZABO SCANDIC

Part of Europa Biosite

Produktinformation



Forschungsprodukte & Biochemikalien



Zellkultur & Verbrauchsmaterial



Diagnostik & molekulare Diagnostik



Laborgeräte & Service

Weitere Information auf den folgenden Seiten!
See the following pages for more information!



Lieferung & Zahlungsart

siehe unsere [Liefer- und Versandbedingungen](#)

Zuschläge

- Mindermengenzuschlag
- Trockeneiszuschlag
- Gefahrgutzuschlag
- Expressversand

SZABO-SCANDIC HandelsgmbH

Quellenstraße 110, A-1100 Wien

T. +43(0)1 489 3961-0

F. +43(0)1 489 3961-7

mail@szabo-scandic.com

www.szabo-scandic.com

[linkedin.com/company/szaboscandic](https://www.linkedin.com/company/szaboscandic) 



UK Office

Everest Biotech Ltd

Cherwell Innovation Centre
77 Heyford Park
Upper Heyford
Oxfordshire
OX25 5HD
UK

Enquiries:

info@everestbiotech.com

Sales:

sales@everestbiotech.com

Tech support:

support@everestbiotech.com

Tel: +44 (0)1869 238326

Fax: +44 (0)1869 238327

US Office

Everest Biotech c/o Abcore

405 Maple Street, Suite A106
Ramona,
CA 92065
USA

Inquiries:

info@everestbiotech.com

Sales:

usasales@everestbiotech.com

Tech support:

support@everestbiotech.com

Tel: 888-320-4628 (toll-free)

Fax: 888-841-9041

www.everestbiotech.com

**Research Use Only. Not for
diagnostic or therapeutic use.**

EB06909 - Goat Anti-GDF15 Antibody

Size: 100µg specific antibody in 200µl



Target Protein

Principal Names: GDF15, PDF, MIC1, PLAB, MIC-1, NAG-1, PTGFB, GDF-15, growth differentiation factor 15, PTGF-beta, prostate differentiation factor, NSAID (nonsteroidal anti-inflammatory drug)-activated protein 1

Official Symbol: GDF15

Accession Number(s): NP_004855.2

Human GeneID(s): [9518](#)

Immunogen

Peptide with sequence C-QKTDGTVSLQTYDD, from the C Terminus of the protein sequence according to NP_004855.2.

Please note the [peptide](#) is available for sale.

Purification and Storage

Purified from goat serum by ammonium sulphate precipitation followed by antigen affinity chromatography using the immunizing peptide.

Supplied at 0.5 mg/ml in Tris saline, 0.02% sodium azide, pH7.3 with 0.5% bovine serum albumin.

Aliquot and store at -20°C. Minimize freezing and thawing.

Applications Tested

Peptide ELISA: antibody detection limit dilution 1:128000.

Western blot: Approx 35kDa band observed in Human Prostate lysates and in lysates of cell lines A549, CaCo-2 and LNCaP (calculated MW of 34.1kDa according to NP_004855.2). An additional band was seen at 48kDa in some lysates and was successfully blocked by incubation with the immunizing peptide. Recommended concentration 0.1-0.5µg/ul. Primary incubation 1 hour at room temperature.

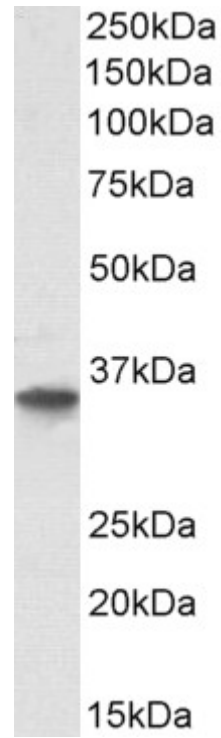
IHC: Paraffin embedded Human Placenta. Recommended concentration: 7µg/ml.

Flow Cytometry: Flow cytometric analysis of HeLa cells. Recommended concentration: 10µg/ml.

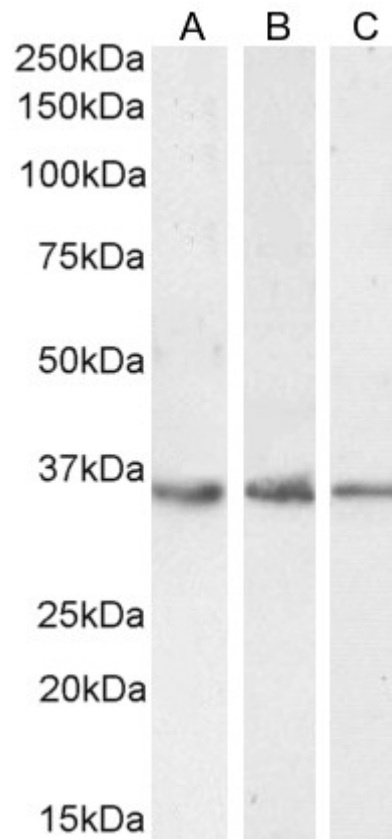
Species Reactivity

Tested: Human

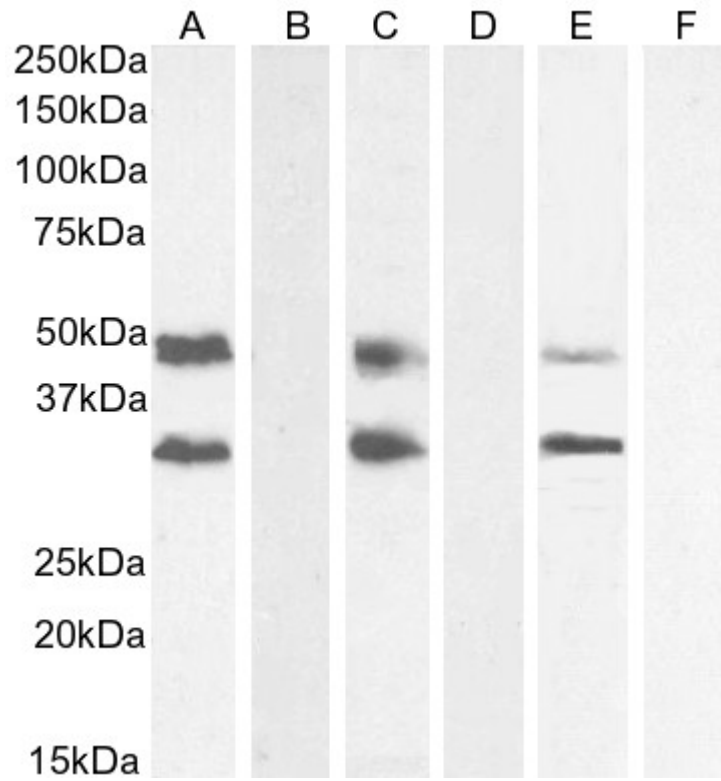
Expected from sequence similarity: Human



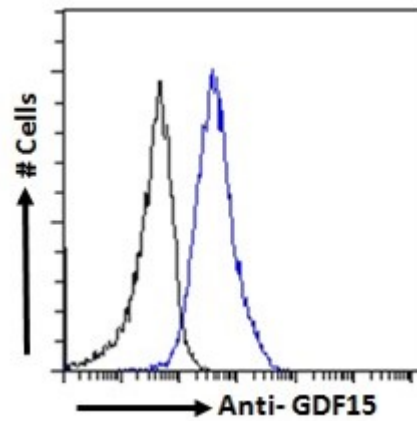
EB06909 (0.5 μ g/ml) staining of Human Prostate lysate (35 μ g protein in RIPA buffer). Detected by chemiluminescence.



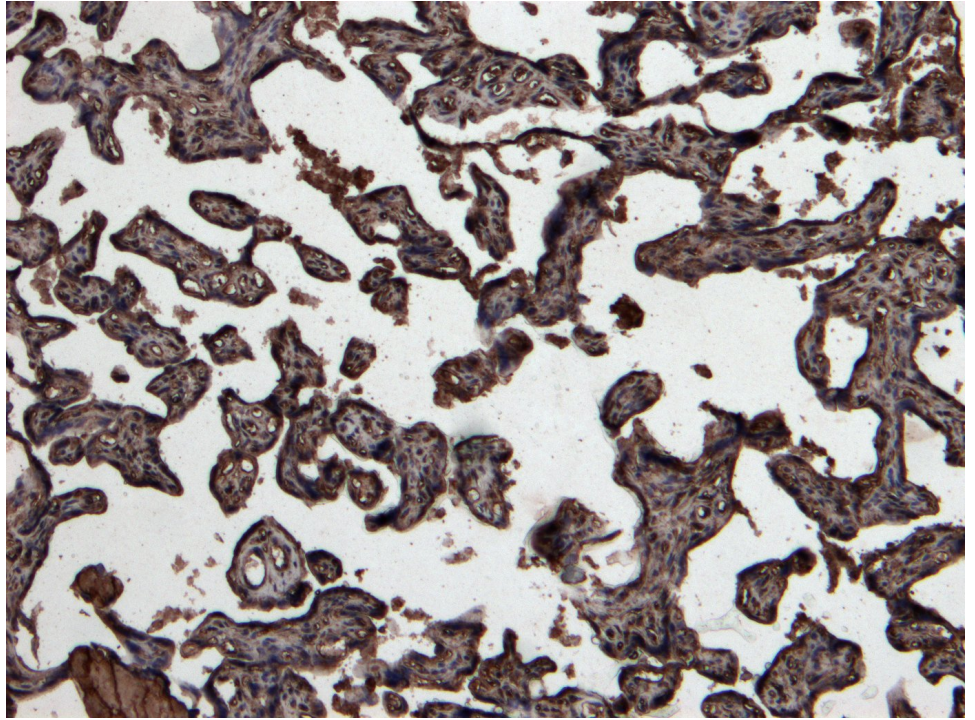
EB06909 (0.1 μ g/ml) staining of A549 lysate 1 (A), CaCo-2 lysate 1 (B) and (0.3 μ g/ml) LNCaP lysate 1 (C) (35 μ g protein in RIPA buffer). Detected by chemiluminescence.



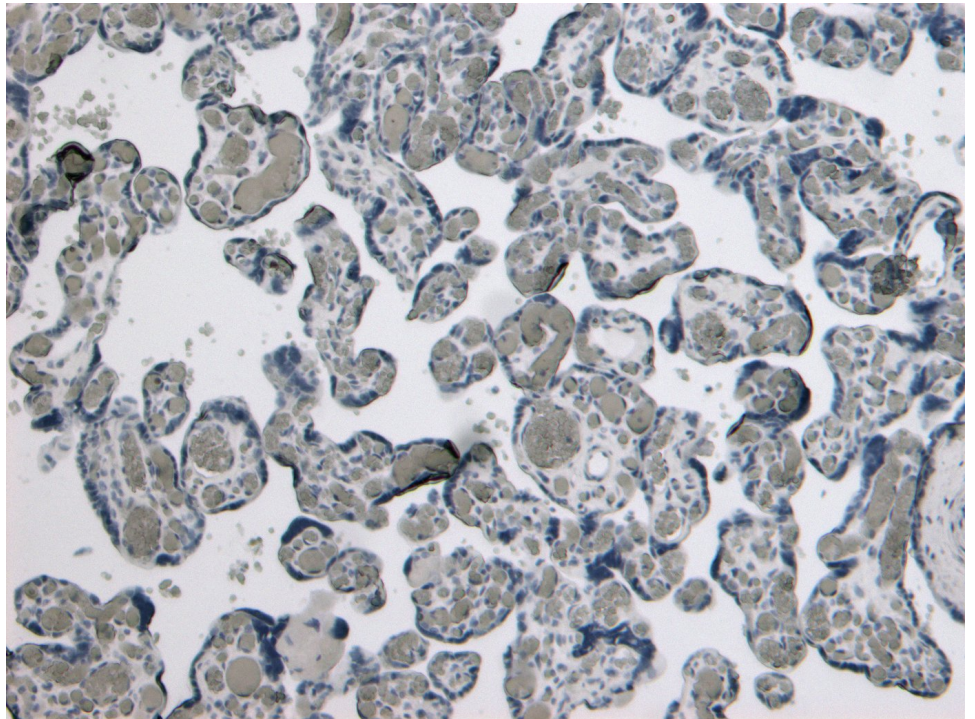
EB06909 (0.3ug/ml) staining of A549 lysate 2 (A) + peptide (B), CaCo-2 lysate 2 (C) + peptide (D), LNCaP lysate 2 (E) + peptide (F) (35µg protein in RIPA buffer). Detected by chemiluminescence.



EB06909 Flow cytometric analysis of paraformaldehyde fixed HeLa cells (blue line), permeabilized with 0.5% Triton. Primary incubation 1hr (10ug/ml) followed by Alexa Fluor 488 secondary antibody (1ug/ml). IgG control: Unimmunized goat IgG (black line) followed by Alexa Fluor 488 secondary antibody.



EB06909 (7 μ g/ml) staining of paraffin embedded Human Placenta. Heat induced antigen retrieval with citrate buffer pH 6, HRP-staining.



EB06909 Negative Control showing staining of paraffin embedded Human Placenta, with no primary antibody.