



SZABO SCANDIC

Part of Europa Biosite

Produktinformation



Forschungsprodukte & Biochemikalien



Zellkultur & Verbrauchsmaterial



Diagnostik & molekulare Diagnostik



Laborgeräte & Service

Weitere Information auf den folgenden Seiten!
See the following pages for more information!



Lieferung & Zahlungsart

siehe unsere [Liefer- und Versandbedingungen](#)

Zuschläge

- Mindermengenzuschlag
- Trockeneiszuschlag
- Gefahrgutzuschlag
- Expressversand

SZABO-SCANDIC HandelsgmbH

Quellenstraße 110, A-1100 Wien

T. +43(0)1 489 3961-0

F. +43(0)1 489 3961-7

mail@szabo-scandic.com

www.szabo-scandic.com

[linkedin.com/company/szaboscandic](https://www.linkedin.com/company/szaboscandic) 



UK Office

Everest Biotech Ltd

Cherwell Innovation Centre
77 Heyford Park
Upper Heyford
Oxfordshire
OX25 5HD
UK

Enquiries:

info@everestbiotech.com

Sales:

sales@everestbiotech.com

Tech support:

support@everestbiotech.com

Tel: +44 (0)1869 238326

Fax: +44 (0)1869 238327

US Office

Everest Biotech c/o Abcore

405 Maple Street, Suite A106
Ramona,
CA 92065
USA

Inquiries:

info@everestbiotech.com

Sales:

usasales@everestbiotech.com

Tech support:

support@everestbiotech.com

Tel: 888-320-4628 (toll-free)

Fax: 888-841-9041

www.everestbiotech.com

**Research Use Only. Not for
diagnostic or therapeutic use.**

EB06923 - Goat Anti-ZASP/ CYPHER / LDB3 Antibody

Size: 100µg specific antibody in 200µl



Target Protein

Principal Names: LDB3, ZASP, LIM domain binding 3, HGNC:15710, KIAA01613, KIAA0613, ORACLE, PDLIM6, PDZ and LIM domain 6, Z-band alternatively spliced PDZ-motif, CYPHER, FLJ35865, ldb3z1, ldb3z4

Official Symbol: LDB3

Accession Number(s): NP_009009.1; NP_001073583.1; NP_001073584.1;
NP_001073585.1

Human GeneID(s): [11155](#)

Immunogen

Peptide with sequence C-KSQNKPEDEADE, from the internal region of the protein sequence according to NP_009009.1; NP_001073583.1; NP_001073584.1;
NP_001073585.1.

Please note the [peptide](#) is available for sale.

Purification and Storage

Purified from goat serum by ammonium sulphate precipitation followed by antigen affinity chromatography using the immunizing peptide.

Supplied at 0.5 mg/ml in Tris saline, 0.02% sodium azide, pH7.3 with 0.5% bovine serum albumin.

Aliquot and store at -20°C. Minimize freezing and thawing.

Applications Tested

Peptide ELISA: antibody detection limit dilution 1:1000.

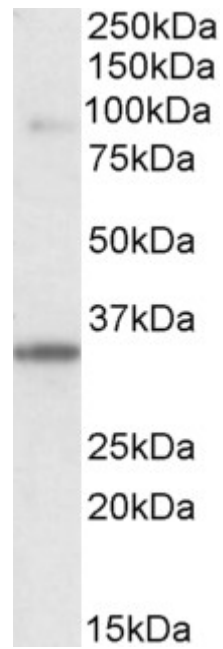
Western blot: Western Blot experiments gave bands at approx 90kDa and 35kDa in Human Skeletal Muscle lysate after 1µg/ml antibody staining. These bands correspond to earlier findings in literature with different antibodies (Huang et al J Biol Chem. 2003 Feb 28;278(9):7360-5; PMID: 12499364). This protein has a calculated MW of 77.1kDa according to NP_009009.1. Recommended concentration: 0.1-1µg/ml.

IHC: Paraffin embedded Human Heart. Recommended concentration: 6-7µg/ml.

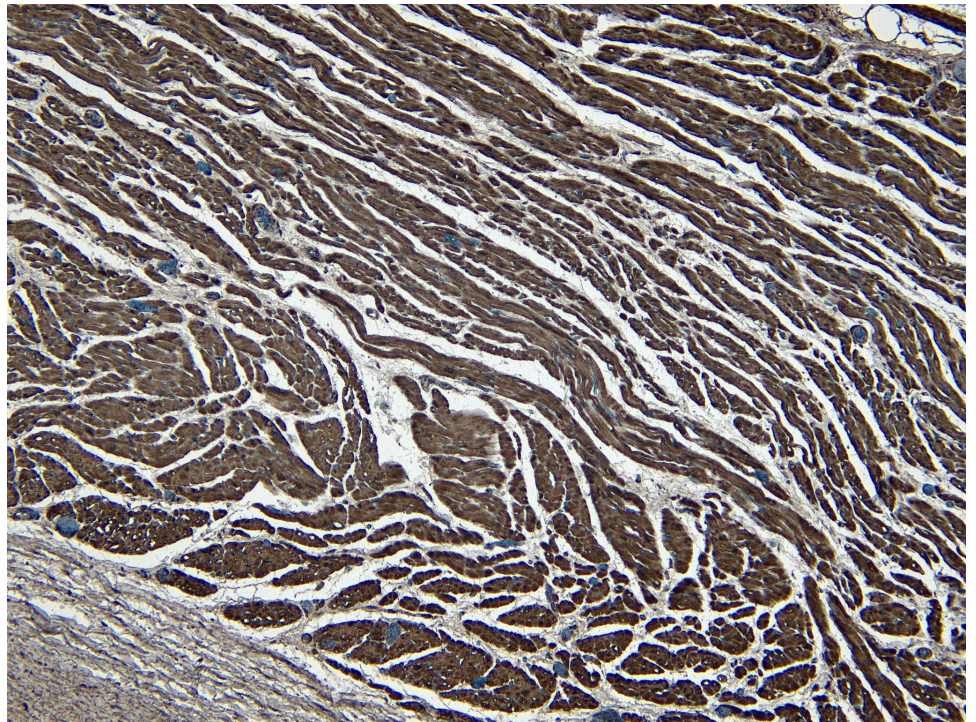
Species Reactivity

Tested: Human

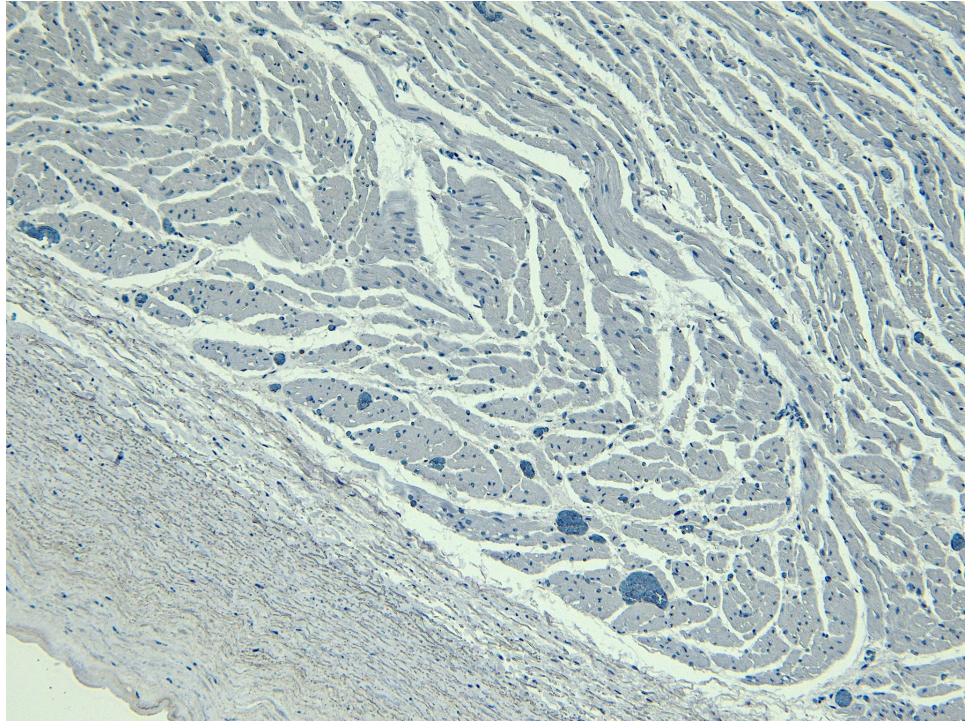
Expected from sequence similarity: Human, Mouse, Rat, Dog, Pig



EB06923 (0.1 μ g/ml) staining of Human Skeletal Muscle lysate (35 μ g protein in RIPA buffer). Primary incubation was 1 hour. Detected by chemiluminescence.



EB06923 (6 μ g/ml) staining of paraffin embedded Human Heart. Heat induced antigen retrieval with citrate buffer pH 6, HRP-staining.



EB06923 Negative Control showing staining of paraffin embedded Human Heart, with no primary antibody.