



SZABO SCANDIC

Part of Europa Biosite

Produktinformation



Forschungsprodukte & Biochemikalien



Zellkultur & Verbrauchsmaterial



Diagnostik & molekulare Diagnostik



Laborgeräte & Service

Weitere Information auf den folgenden Seiten!
See the following pages for more information!



Lieferung & Zahlungsart

siehe unsere [Liefer- und Versandbedingungen](#)

Zuschläge

- Mindermengenzuschlag
- Trockeneiszuschlag
- Gefahrgutzuschlag
- Expressversand

SZABO-SCANDIC HandelsgmbH

Quellenstraße 110, A-1100 Wien

T. +43(0)1 489 3961-0

F. +43(0)1 489 3961-7

mail@szabo-scandic.com

www.szabo-scandic.com

[linkedin.com/company/szaboscandic](https://www.linkedin.com/company/szaboscandic)



UK Office

Everest Biotech Ltd

Cherwell Innovation Centre
77 Heyford Park
Upper Heyford
Oxfordshire
OX25 5HD
UK

Enquiries:

info@everestbiotech.com

Sales:

sales@everestbiotech.com

Tech support:

support@everestbiotech.com

Tel: +44 (0)1869 238326

Fax: +44 (0)1869 238327

US Office

Everest Biotech c/o Abcore

405 Maple Street, Suite A106
Ramona,
CA 92065
USA

Inquiries:

info@everestbiotech.com

Sales:

usasales@everestbiotech.com

Tech support:

support@everestbiotech.com

Tel: 888-320-4628 (toll-free)

Fax: 888-841-9041

www.everestbiotech.com

**Research Use Only. Not for
diagnostic or therapeutic use.**

EB06929 - Goat Anti-Clusterin / APOJ Antibody

Size: 100µg specific antibody in 200µl



Target Protein

Principal Names: APOJ, clusterin, CLU, complement lysis inhibitor, SP-40,40, sulfated glycoprotein 2, testosterone-repressed prostate message 2, apolipoprotein J, HGNC:2095, CLI, MGC24903, SGP-2, SGP2, SP-40, TRPM-2, TRPM2, apolipoprotein J, clusterin, complement-associated protein SP-40, sulfated glycoprotein 2, AAG4, KUB1, aging-associated protein 4, clusterin (complement lysis inhibitor, SP-40,40, sulfated glycoprotein 2, testosterone-repressed prostate message 2, apolipoprotein J)

Official Symbol: CLU

Accession Number(s): NP_001822.2; NP_976084.1

Human GeneID(s): [1191](#)

Important Comments: This antibody is expected to recognise both reported isoforms (NP_001822.2 and NP_976084.1)

Immunogen

Peptide with sequence C-EKALQEYRKKHREE, from the C Terminus of the protein sequence according to NP_001822.2; NP_976084.1.

Please note the [peptide](#) is available for sale.

Purification and Storage

Purified from goat serum by ammonium sulphate precipitation followed by antigen affinity chromatography using the immunizing peptide.

Supplied at 0.5 mg/ml in Tris saline, 0.02% sodium azide, pH7.3 with 0.5% bovine serum albumin.

Aliquot and store at -20°C. Minimize freezing and thawing.

Applications Tested

Peptide ELISA: antibody detection limit dilution 1:64000.

Western blot: Approx 35-37kDa band observed in Human Colon and Prostate lysates (calculated MW of 57.8kDa according to NP_NP_001822.2 and 52.5 according to NP_976084.1). The observed molecular weight corresponds to earlier findings in literature (PMID: 9713325 and PMID: 11560857). Recommended concentration: 0.03-0.1µg/ml.

Primary incubation was 1 hour.

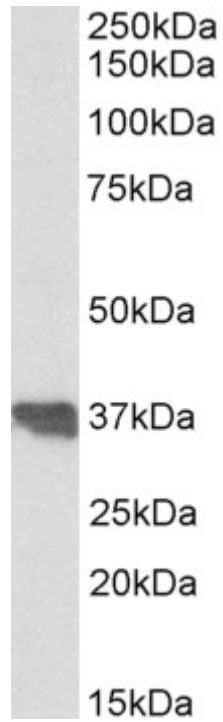
IHC: Paraffin embedded Human Tonsil. Recommended concentration: 2.5µg/ml.

Immunofluorescence: Strong expression of the protein seen in the cytoplasm of HeLa cells. Recommended concentration: 10µg/ml

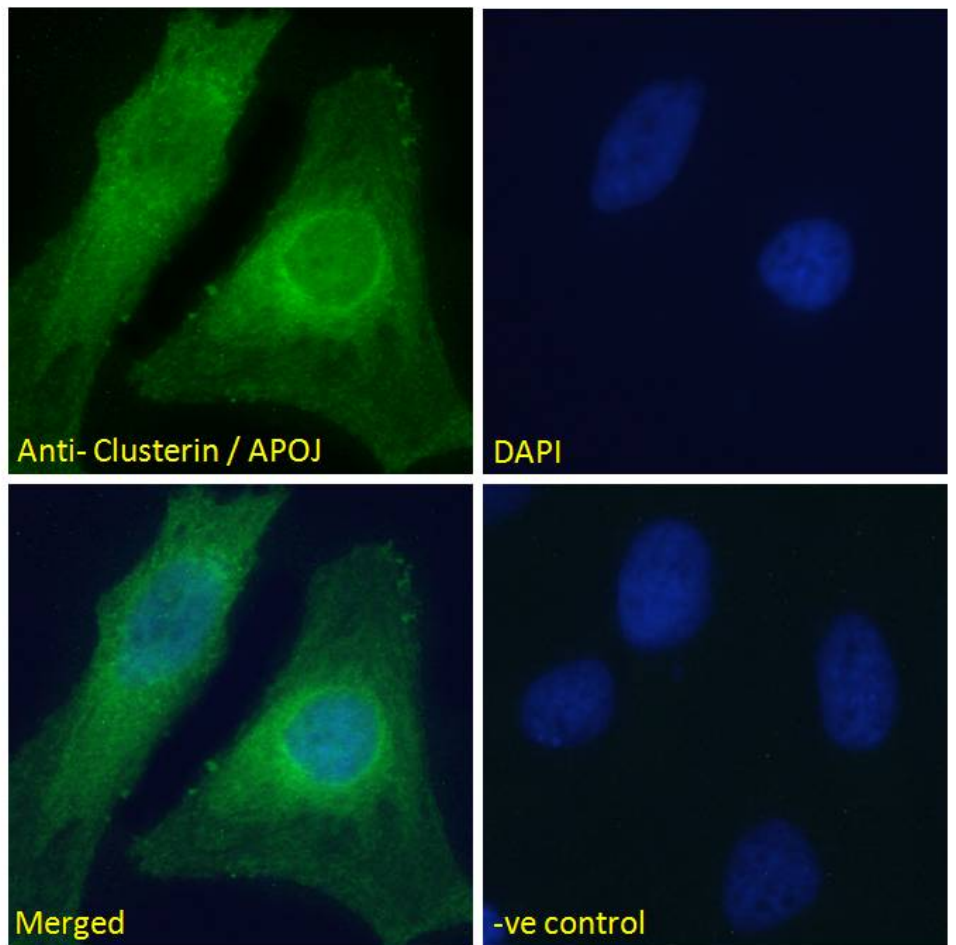
Species Reactivity

Tested: Human

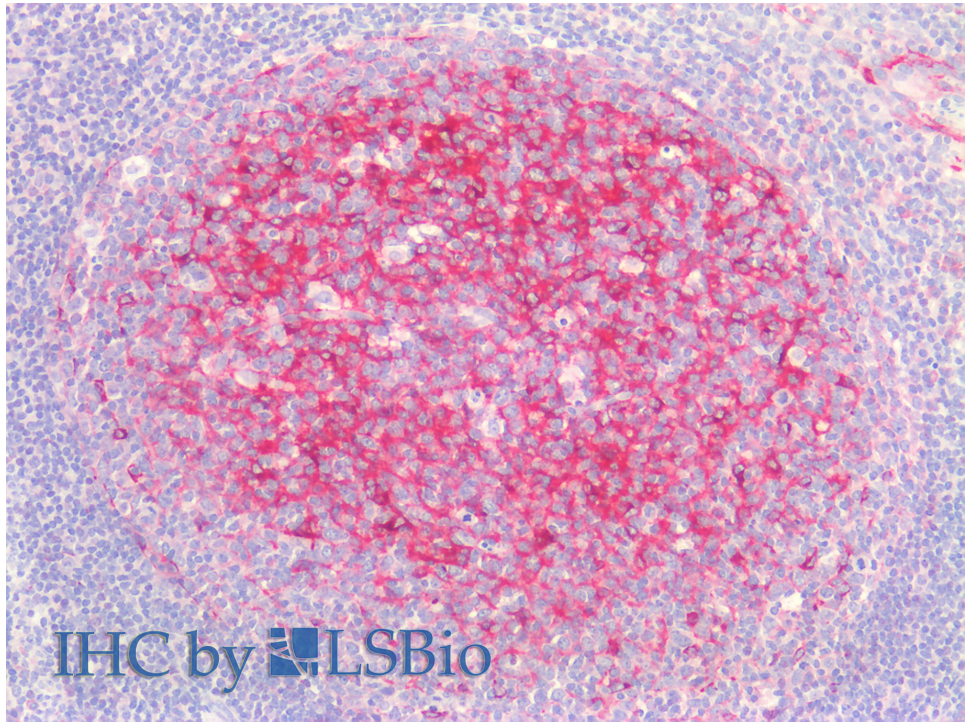
Expected from sequence similarity: Human, Dog



EB06929 (0.1 μ g/ml) staining of Human Colon lysate (35 μ g protein in RIPA buffer). Detected by chemiluminescence.



EB06929 Immunofluorescence analysis of paraformaldehyde fixed HeLa cells, permeabilized with 0.15% Triton. Primary incubation 1hr (10 μ g/ml) followed by Alexa Fluor 488 secondary antibody (2 μ g/ml), showing ER/cytoplasmic staining. The nuclear stain is DAPI (blue). Negative control: Unimmunized goat IgG (10 μ g/ml) followed by Alexa Fluor 488 secondary antibody (2 μ g/ml).



EB06929 (2.5µg/ml) staining of paraffin embedded Human Tonsil. Steamed antigen retrieval with citrate buffer pH 6, AP-staining.