



# SZABO SCANDIC

Part of Europa Biosite

## Produktinformation



Forschungsprodukte & Biochemikalien



Zellkultur & Verbrauchsmaterial



Diagnostik & molekulare Diagnostik



Laborgeräte & Service

Weitere Information auf den folgenden Seiten!  
See the following pages for more information!



### Lieferung & Zahlungsart

siehe unsere [Liefer- und Versandbedingungen](#)

### Zuschläge

- Mindermengenzuschlag
- Trockeneiszuschlag
- Gefahrgutzuschlag
- Expressversand

### SZABO-SCANDIC HandelsgmbH

Quellenstraße 110, A-1100 Wien

T. +43(0)1 489 3961-0

F. +43(0)1 489 3961-7

[mail@szabo-scandic.com](mailto:mail@szabo-scandic.com)

[www.szabo-scandic.com](http://www.szabo-scandic.com)

[linkedin.com/company/szaboscandic](https://www.linkedin.com/company/szaboscandic) 



## UK Office

### Everest Biotech Ltd

Cherwell Innovation Centre  
77 Heyford Park  
Upper Heyford  
Oxfordshire  
OX25 5HD  
UK

Enquiries:

[info@everestbiotech.com](mailto:info@everestbiotech.com)

Sales:

[sales@everestbiotech.com](mailto:sales@everestbiotech.com)

Tech support:

[support@everestbiotech.com](mailto:support@everestbiotech.com)

Tel: +44 (0)1869 238326

Fax: +44 (0)1869 238327

## US Office

### Everest Biotech c/o Abcore

405 Maple Street, Suite A106  
Ramona,  
CA 92065  
USA

Inquiries:

[info@everestbiotech.com](mailto:info@everestbiotech.com)

Sales:

[usasales@everestbiotech.com](mailto:usasales@everestbiotech.com)

Tech support:

[support@everestbiotech.com](mailto:support@everestbiotech.com)

Tel: 888-320-4628 (toll-free)

Fax: 888-841-9041

[www.everestbiotech.com](http://www.everestbiotech.com)

**Research Use Only. Not for  
diagnostic or therapeutic use.**

## EB06940 - Goat Anti-Duffy / FY / DARC Antibody

Size: 100µg specific antibody in 200µl



### Target Protein

**Principal Names:** ACKR1, atypical chemokine receptor 1 (Duffy blood group), CCBP1, CD234, DARC, Dfy, FY, GPD, GpFy, WBCQ1, Duffy antigen chemokine receptor, Duffy blood group antigen, Duffy blood group, atypical chemokine receptor, Duffy blood group, chemokine receptor, Fy glycoprotein, duffy blood group chemokine receptor, glycoprotein D, plasmodium vivax receptor, CTA-134P22.3, HGNC:4035

**Official Symbol:** ACKR1

**Accession Number(s):** NP\_001116423.1; NP\_002027.2

**Human GeneID(s):** [2532](#)

**Important Comments:** This antibody is expected to recognize both reported isoforms (NP\_001116423.1; NP\_002027.2).

### Immunogen

Peptide with sequence HRAELSPSTENSSQLDFED-C, from the N Terminus of the protein sequence according to NP\_001116423.1; NP\_002027.2.

Please note the [peptide](#) is available for sale.

### Purification and Storage

Purified from goat serum by ammonium sulphate precipitation followed by antigen affinity chromatography using the immunizing peptide.

Supplied at 0.5 mg/ml in Tris saline, 0.02% sodium azide, pH7.3 with 0.5% bovine serum albumin.

Aliquot and store at -20°C. Minimize freezing and thawing.

### Applications Tested

**Peptide ELISA:** antibody detection limit dilution 1:16000.

**Western blot:** Approx 37kDa band observed in Human Liver lysates (calculated MW of 35.6kDa according to NP\_002027.2). Recommended concentration: 0.3-1µg/ml. Primary incubation was 1 hour.

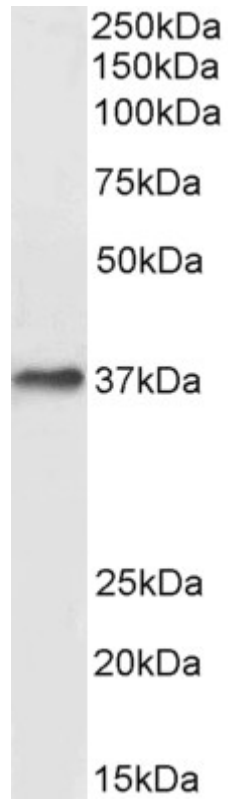
**IHC:** In paraffin embedded Human Kidney stains epithelial cells of renal tubules and endothelial cells of vessels. The granular staining is compatible with the endoplasmic reticulum association of the protein. Recommended concentration: 3µg/ml. Paraffin embedded Human Lung. Recommended concentration: 5µg/ml.

**Flow cytometry:** Flow cytometric analysis of HEK293 cells. Recommended concentration: 10ug/ml. A customer has reported successful staining of HEK293S-TetR transfected with DARC receptor at a dilution of 1/1000.

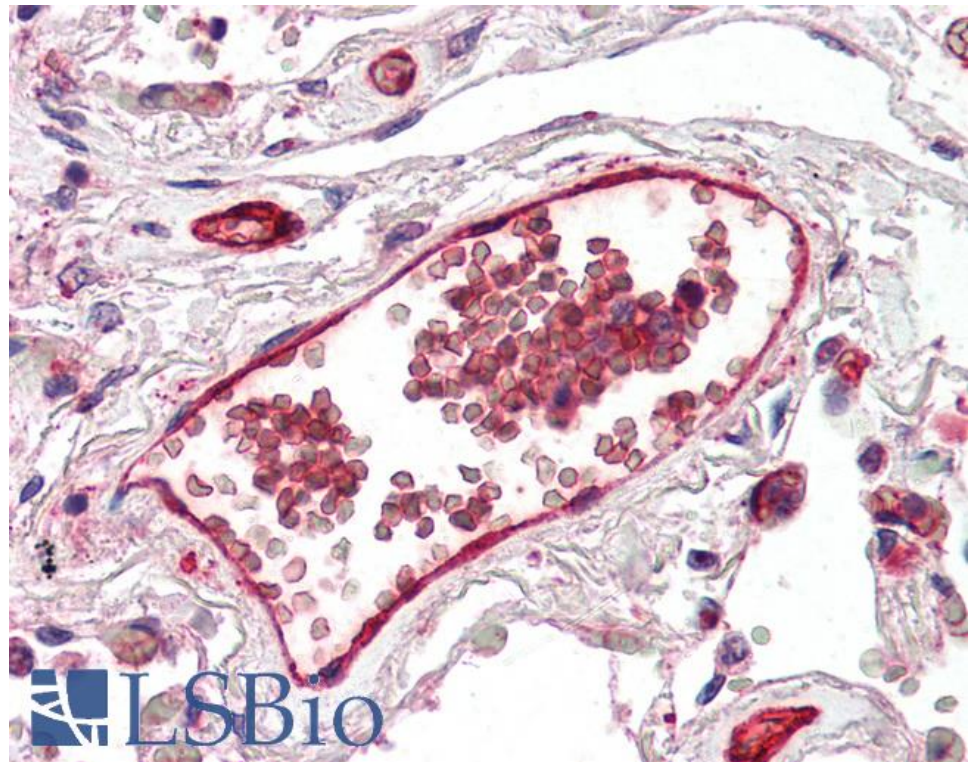
### Species Reactivity

**Tested:** Human

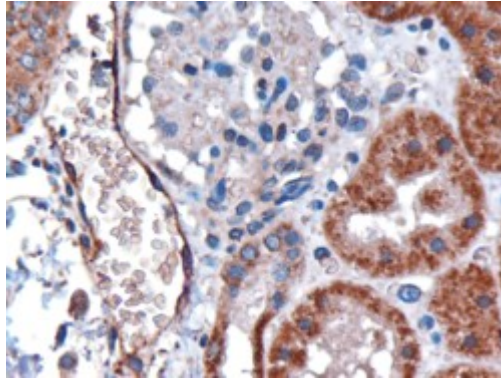
**Expected from sequence similarity:** Human



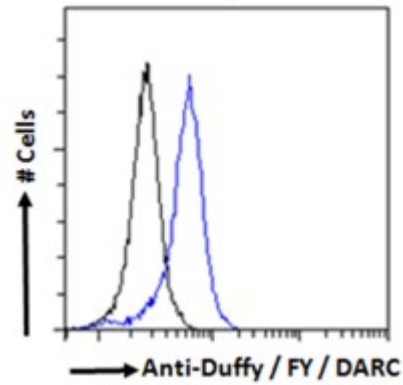
EB06940 (0.3 $\mu$ g/ml) staining of Human Liver lysate (35 $\mu$ g protein in RIPA buffer). Detected by chemiluminescence.



EB06940 (5 $\mu$ g/ml) staining of paraffin embedded Human Lung. Microwaved antigen retrieval with citrate buffer Ph 6, AP-staining.



EB06940 (3 $\mu$ g/ml) staining of paraffin embedded Human Kidney. Microwaved antigen retrieval with citrate buffer Ph 6, HRP-staining.



Flow cytometric analysis of paraformaldehyde fixed HEK293 cells (blue line), permeabilized with 0.5% Triton. Primary incubation 1 hr (10 $\mu$ g/ml) followed by Alexa Fluor 488 secondary antibody (0.4 $\mu$ g/ml). IgG control: Unimmunized goat IgG (black line) followed by Alexa Fluor 488 secondary antibody.