



SZABO SCANDIC

Part of Europa Biosite

Produktinformation



Forschungsprodukte & Biochemikalien



Zellkultur & Verbrauchsmaterial



Diagnostik & molekulare Diagnostik



Laborgeräte & Service

Weitere Information auf den folgenden Seiten!
See the following pages for more information!



Lieferung & Zahlungsart

siehe unsere [Liefer- und Versandbedingungen](#)

Zuschläge

- Mindermengenzuschlag
- Trockeneiszuschlag
- Gefahrgutzuschlag
- Expressversand

SZABO-SCANDIC HandelsgmbH

Quellenstraße 110, A-1100 Wien

T. +43(0)1 489 3961-0

F. +43(0)1 489 3961-7

mail@szabo-scandic.com

www.szabo-scandic.com

[linkedin.com/company/szaboscandic](https://www.linkedin.com/company/szaboscandic) 



UK Office

Everest Biotech Ltd

Cherwell Innovation Centre
77 Heyford Park
Upper Heyford
Oxfordshire
OX25 5HD
UK

Enquiries:

info@everestbiotech.com

Sales:

sales@everestbiotech.com

Tech support:

support@everestbiotech.com

Tel: +44 (0)1869 238326

Fax: +44 (0)1869 238327

US Office

Everest Biotech c/o Abcore

405 Maple Street, Suite A106
Ramona,
CA 92065
USA

Inquiries:

info@everestbiotech.com

Sales:

usasales@everestbiotech.com

Tech support:

support@everestbiotech.com

Tel: 888-320-4628 (toll-free)

Fax: 888-841-9041

www.everestbiotech.com

**Research Use Only. Not for
diagnostic or therapeutic use.**

EB06947 - Goat Anti-Glycophorin A Antibody

Size: 100µg specific antibody in 200µl



Target Protein

Principal Names: glycophorin A (includes MN blood group), HGNC:4702, GYPA, GPA, GPErik, GPSAT, HGpMiV, HGpMiX, HGpMiXI, HGpSta(C), MN, MNS, Mi.V glycoprotein (24 AA), erythroid-lineage-specific membrane sialoglycoprotein, glycophorin A, glycophorin A, GPA, glycophorin Erik, glycophorin Mil, glycophorin MiV, glycophorin MiX, glycophorin SAT, glycophorin Sta type C, recombinant MiDR, recombinant glycophorin A-B Miltenberger-DR, CD235a, GpMillI, HGpMillI, glycophorin A (MN blood group), glycophorin MillI

Official Symbol: GYPA

Accession Number(s): NP_002090.2

Human GeneID(s): [2993](#)

Immunogen

Peptide with sequence C-SVEIENPETSDQ, from the C Terminus of the protein sequence according to NP_002090.2.

Please note the [peptide](#) is available for sale.

Purification and Storage

Purified from goat serum by ammonium sulphate precipitation followed by antigen affinity chromatography using the immunizing peptide.

Supplied at 0.5 mg/ml in Tris saline, 0.02% sodium azide, pH7.3 with 0.5% bovine serum albumin.

Aliquot and store at -20°C. Minimize freezing and thawing.

Applications Tested

Peptide ELISA: antibody detection limit dilution 1:2000.

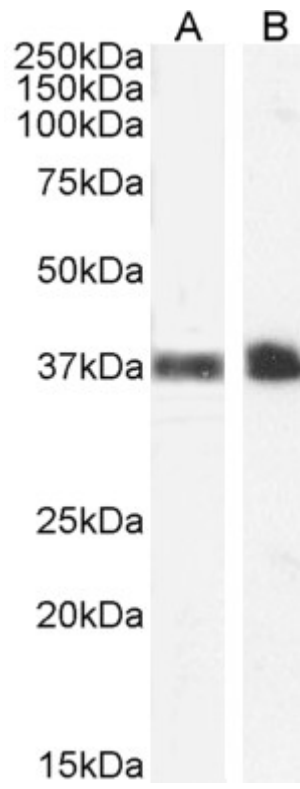
Western blot: Approx 37-38kDa band observed in Human Peripheral Blood Monocytes and Kidney lysates (calculated MW of 16.4kDa according to NP_002090.2). The observed molecular weight corresponds to earlier findings with different antibodies from other commercial sources and in the literature (Challou, N. et al., PMID: 8204624).

Recommended concentration: 1-3µg/ml. Primary incubation 1 hour at room temperature.

Species Reactivity

Tested: Human

Expected from sequence similarity: Human



EB06947 (1 μ g/ml) staining of Human Peripheral Blood Monocytes (A) and Kidney (B) lysate (35 μ g protein in RIPA buffer). Detected by chemiluminescence.