



SZABO SCANDIC

Part of Europa Biosite

Produktinformation



Forschungsprodukte & Biochemikalien



Zellkultur & Verbrauchsmaterial



Diagnostik & molekulare Diagnostik



Laborgeräte & Service

Weitere Information auf den folgenden Seiten!
See the following pages for more information!



Lieferung & Zahlungsart

siehe unsere [Liefer- und Versandbedingungen](#)

Zuschläge

- Mindermengenzuschlag
- Trockeneiszuschlag
- Gefahrgutzuschlag
- Expressversand

SZABO-SCANDIC HandelsgmbH

Quellenstraße 110, A-1100 Wien

T. +43(0)1 489 3961-0

F. +43(0)1 489 3961-7

mail@szabo-scandic.com

www.szabo-scandic.com

[linkedin.com/company/szaboscandic](https://www.linkedin.com/company/szaboscandic) 



UK Office

Everest Biotech Ltd

Cherwell Innovation Centre
77 Heyford Park
Upper Heyford
Oxfordshire
OX25 5HD
UK

Enquiries:

info@everestbiotech.com

Sales:

sales@everestbiotech.com

Tech support:

support@everestbiotech.com

Tel: +44 (0)1869 238326

Fax: +44 (0)1869 238327

US Office

Everest Biotech c/o Abcore

405 Maple Street, Suite A106
Ramona,
CA 92065
USA

Inquiries:

info@everestbiotech.com

Sales:

usasales@everestbiotech.com

Tech support:

support@everestbiotech.com

Tel: 888-320-4628 (toll-free)

Fax: 888-841-9041

www.everestbiotech.com

**Research Use Only. Not for
diagnostic or therapeutic use.**

EB06959 - Goat Anti-CBX3 / HP1 Gamma Antibody

Size: 100µg specific antibody in 200µl

Target Protein

Principal Names: CBX3, HP1-GAMMA, chromobox homolog 3 (HP1 gamma homolog, Drosophila), HGNC:1553, HECH, HP1Hs-gamma, HP1 gamma homolog, chromobox homolog 3, chromobox homolog 3 (Drosophila HP1 gamma), heterochromatin protein HP1 gamma, heterochromatin-like protein 1

Official Symbol: CBX3

Accession Number(s): NP_009207.2

Human GeneID(s): [11335](#)

Non-Human GeneID(s): 12417 (mouse), 297093 (rat)

Important Comments: No cross-reactivity expected with HP1-alpha and HP1-beta. Reported variants represent identical protein: NP_009207.2, NP_057671.2

Immunogen

Peptide with sequence C-EAFLNSQKAGKEKD, from the internal region of the protein sequence according to NP_009207.2.

Please note the [peptide](#) is available for sale.

Purification and Storage

Purified from goat serum by ammonium sulphate precipitation followed by antigen affinity chromatography using the immunizing peptide.

Supplied at 0.5 mg/ml in Tris saline, 0.02% sodium azide, pH7.3 with 0.5% bovine serum albumin.

Aliquot and store at -20°C. Minimize freezing and thawing.

Applications Tested

Peptide ELISA: antibody detection limit dilution 1:32000.

Western blot: Approx. 20kDa band observed in lysates of cell lines A431, HeLa, HepG2, NIH3T3 and NSO (calculated MW of 20.8kDa according to NP_009207.2 and NP_057671.2). Recommended concentration: 0.3-1.0 µg/ml.

IHC: In paraffin embedded Human Placenta shows strong nuclear staining in trophoblasts. Recommended concentration: 2-3µg/ml.

Immunofluorescence: Strong expression of the protein seen in HeLa and U2OS cells. Recommended concentration: 10µg/ml.

Flow Cytometry: Flow cytometric analysis of HeLa cells. Recommended concentration: 10ug/ml.

Species Reactivity

Tested: Human, Mouse

Expected from sequence similarity: Human, Mouse, Rat, Cow, Dog

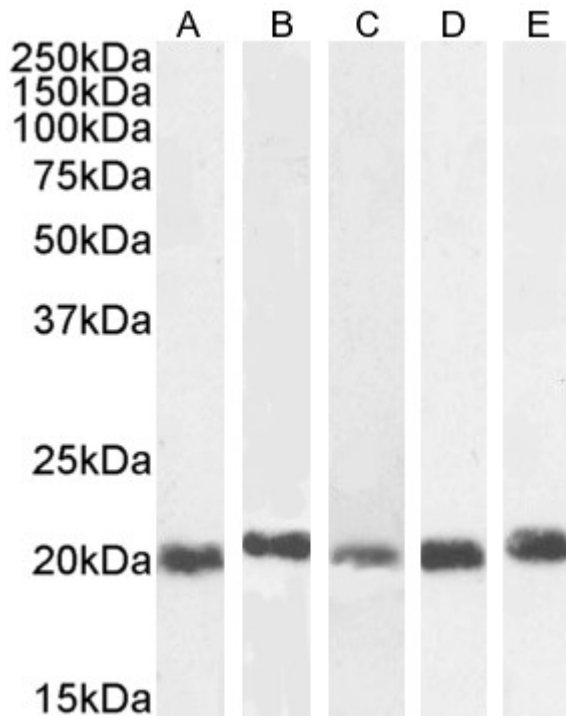
Specific Reference

This antibody has been successfully used in Western blot on Mouse:

Francescopaolo Di Cello, James Shin, Kirsten Harbom, Cory Brayton
Knockdown of HMGA1 inhibits human breast cancer cell growth and metastasis in immunodeficient mice

Biochem Biophys Res Commun. 2013 Apr 26;434(1):70-4.

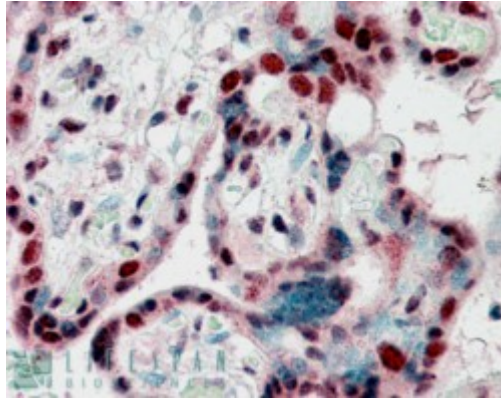
PMID: 23545254



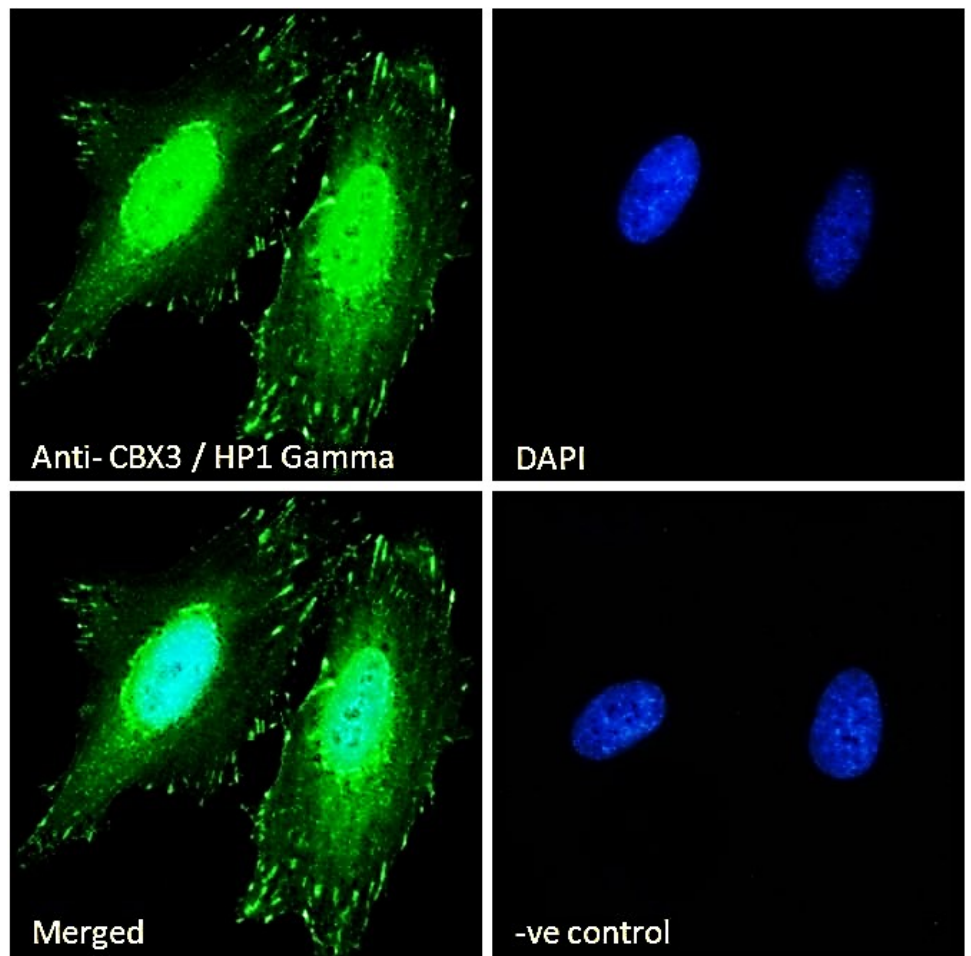
EB06959 (0.03µg/ml) staining of A431 (A), HeLa (B), HepG2 (C), Jurkat (D) and K562 (E) nuclear cell lysate. (35µg protein in RIPA buffer). Detected by chemiluminescence.



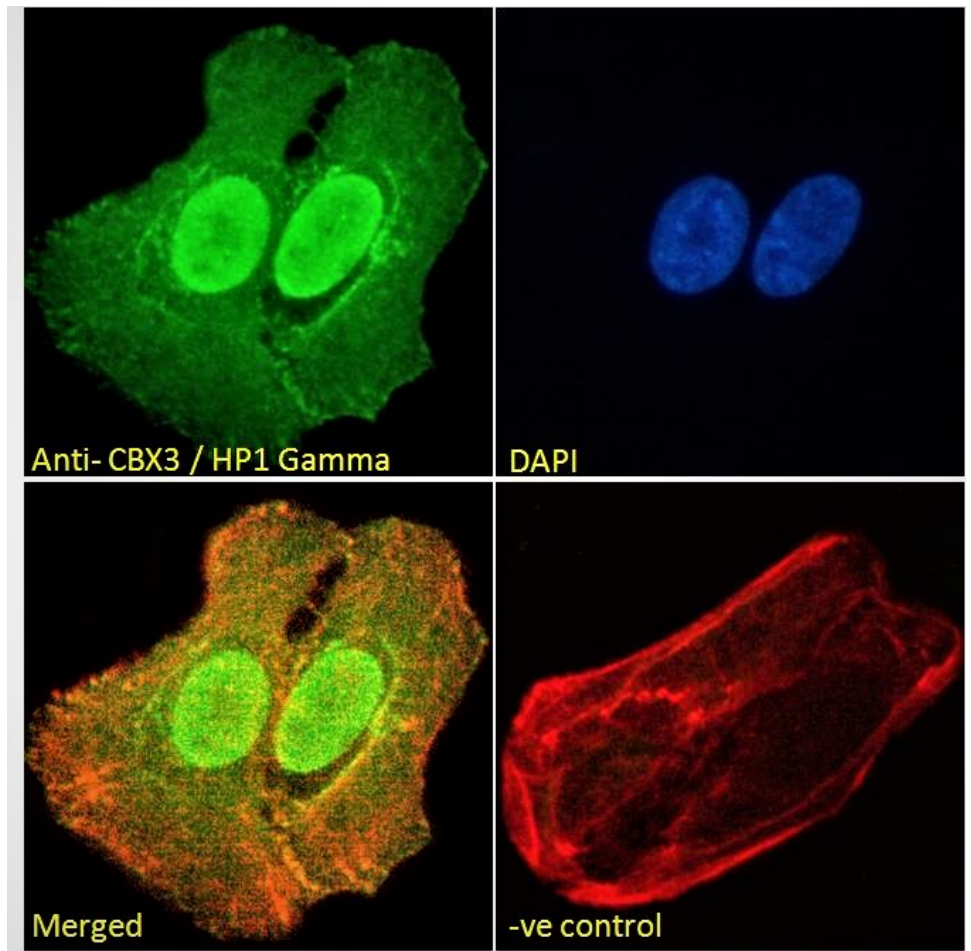
EB06959 (0.1µg/ml) staining of NIH3T3 nuclear cell lysate (35µg protein in RIPA buffer). Detected by chemiluminescence.



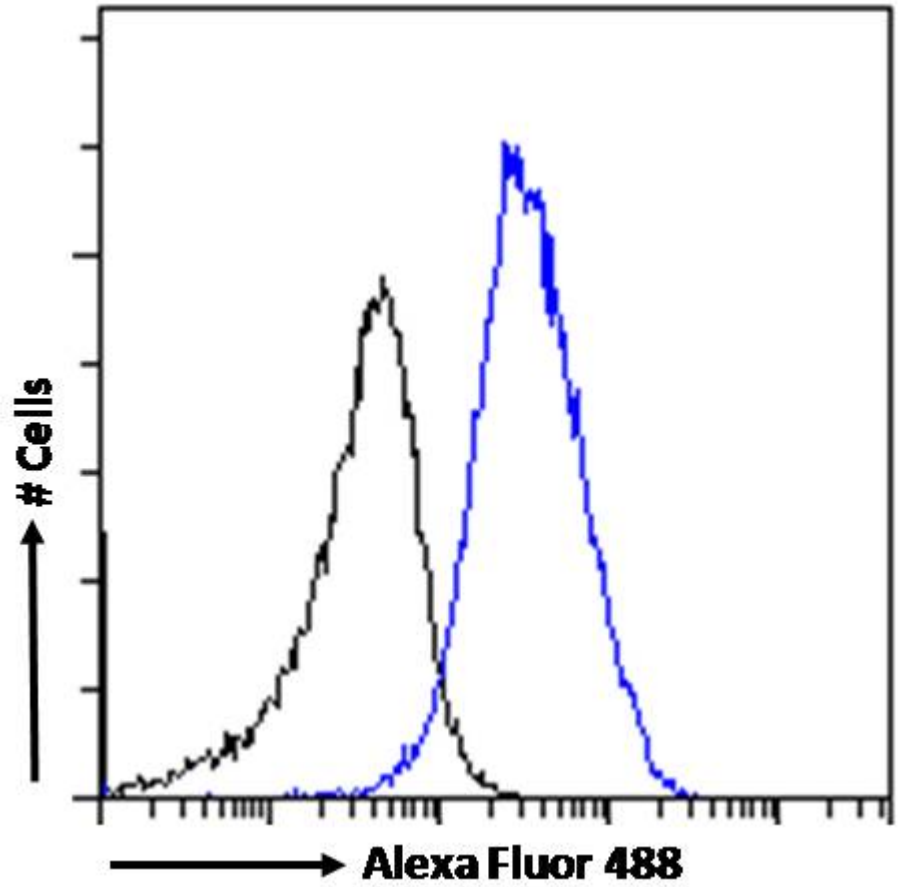
EB06959 (2.5µg/ml) staining of paraffin embedded Human Placenta. Steamed antigen retrieval with citrate buffer pH 6, AP-staining.



EB06959 Immunofluorescence analysis of paraformaldehyde fixed HeLa cells, permeabilized with 0.15% Triton. Primary incubation 1hr (10ug/ml) followed by Alexa Fluor 488 secondary antibody (2ug/ml), showing strong nuclear and some cytoplasmic staining. The nuclear stain is DAPI (blue). Negative control: Unimmunized goat IgG (10ug/ml) followed by Alexa Fluor 488 secondary antibody (2ug/ml).



EB06959 Immunofluorescence analysis of paraformaldehyde fixed U2OS cells, permeabilized with 0.15% Triton. Primary incubation 1hr (10ug/ml) followed by Alexa Fluor 488 secondary antibody (2ug/ml), showing strong nuclear and some cytoplasmic staining. Actin filaments were stained with phalloidin (red) and the nuclear stain is DAPI (blue). Negative control: Unimmunized goat IgG (10ug/ml) followed by Alexa Fluor 488 secondary antibody (2ug/ml).



EB06959 Flow cytometric analysis of paraformaldehyde fixed HeLa cells (blue line), permeabilized with 0.5% Triton. Primary incubation 1hr (10ug/ml) followed by Alexa Fluor 488 secondary antibody (1ug/ml). IgG control: Unimmunized goat IgG (black line) followed by Alexa Fluor 488 secondary antibody.