



# SZABO SCANDIC

Part of Europa Biosite

## Produktinformation



Forschungsprodukte & Biochemikalien



Zellkultur & Verbrauchsmaterial



Diagnostik & molekulare Diagnostik



Laborgeräte & Service

Weitere Information auf den folgenden Seiten!  
See the following pages for more information!



### Lieferung & Zahlungsart

siehe unsere [Liefer- und Versandbedingungen](#)

### Zuschläge

- Mindermengenzuschlag
- Trockeneiszuschlag
- Gefahrgutzuschlag
- Expressversand

### SZABO-SCANDIC HandelsgmbH

Quellenstraße 110, A-1100 Wien

T. +43(0)1 489 3961-0

F. +43(0)1 489 3961-7

[mail@szabo-scandic.com](mailto:mail@szabo-scandic.com)

[www.szabo-scandic.com](http://www.szabo-scandic.com)

[linkedin.com/company/szaboscandic](https://www.linkedin.com/company/szaboscandic) 



## UK Office

### Everest Biotech Ltd

Cherwell Innovation Centre  
77 Heyford Park  
Upper Heyford  
Oxfordshire  
OX25 5HD  
UK

Enquiries:

[info@everestbiotech.com](mailto:info@everestbiotech.com)

Sales:

[sales@everestbiotech.com](mailto:sales@everestbiotech.com)

Tech support:

[support@everestbiotech.com](mailto:support@everestbiotech.com)

Tel: +44 (0)1869 238326

Fax: +44 (0)1869 238327

## US Office

### Everest Biotech c/o Abcore

405 Maple Street, Suite A106  
Ramona,  
CA 92065  
USA

Inquiries:

[info@everestbiotech.com](mailto:info@everestbiotech.com)

Sales:

[usasales@everestbiotech.com](mailto:usasales@everestbiotech.com)

Tech support:

[support@everestbiotech.com](mailto:support@everestbiotech.com)

Tel: 888-320-4628 (toll-free)

Fax: 888-841-9041

[www.everestbiotech.com](http://www.everestbiotech.com)

**Research Use Only. Not for  
diagnostic or therapeutic use.**

## EB07025 - Goat Anti-PTCH (C Terminus) Antibody

Size: 100µg specific antibody in 200µl



### Target Protein

**Principal Names:** PTCH, patched homolog (Drosophila), HGNC:9585, BCNS, HPE7, NBCCS, PTC, PTC1, patched, patched (Drosophila) homolog, PTCH1, patched homolog 1 (Drosophila), RP11-435O5.3, FLJ26746, FLJ42602, PTCH11, OTTHUMP00000021709, OTTHUMP00000021710, PTCH protein +12b, PTCH protein +4', PTCH protein -10

**Official Symbol:** PTCH1

**Accession Number(s):** NP\_000255.1; NP\_001077072.1; NP\_001077071.1; NP\_001077073.1; NP\_001077074.1; NP\_001077075.1; NP\_001077076.1

**Human GeneID(s):** [5727](#)

**Important Comments:** This antibody is expected to recognise all reported isoforms. Variants (NP\_001077073.1; NP\_001077074.1; NP\_001077075.1; NP\_001077076.1) encode the same isoform.

### Immunogen

Peptide with sequence ELQDVECEERPR, from the C Terminus of the protein sequence according to NP\_000255.1; NP\_001077072.1; NP\_001077071.1; NP\_001077073.1; NP\_001077074.1; NP\_001077075.1; NP\_001077076.1.

Please note the [peptide](#) is available for sale.

### Purification and Storage

Purified from goat serum by ammonium sulphate precipitation followed by antigen affinity chromatography using the immunizing peptide.

Supplied at 0.5 mg/ml in Tris saline, 0.02% sodium azide, pH7.3 with 0.5% bovine serum albumin.

Aliquot and store at -20°C. Minimize freezing and thawing.

### Applications Tested

**Peptide ELISA:** antibody detection limit dilution 1:16000.

**IHC:** Paraffin embedded Human Brain (Coretx). Recommended concentration: 8µg/ml.

**Immunofluorescence:** Strong expression of the protein seen in the Golgi of HeLa and NIH3T3 cells. Recommended concentration: 10µg/ml.

### Species Reactivity

**Tested:** Human, Mouse

**Expected from sequence similarity:** Human, Mouse, Rat

### Specific Reference

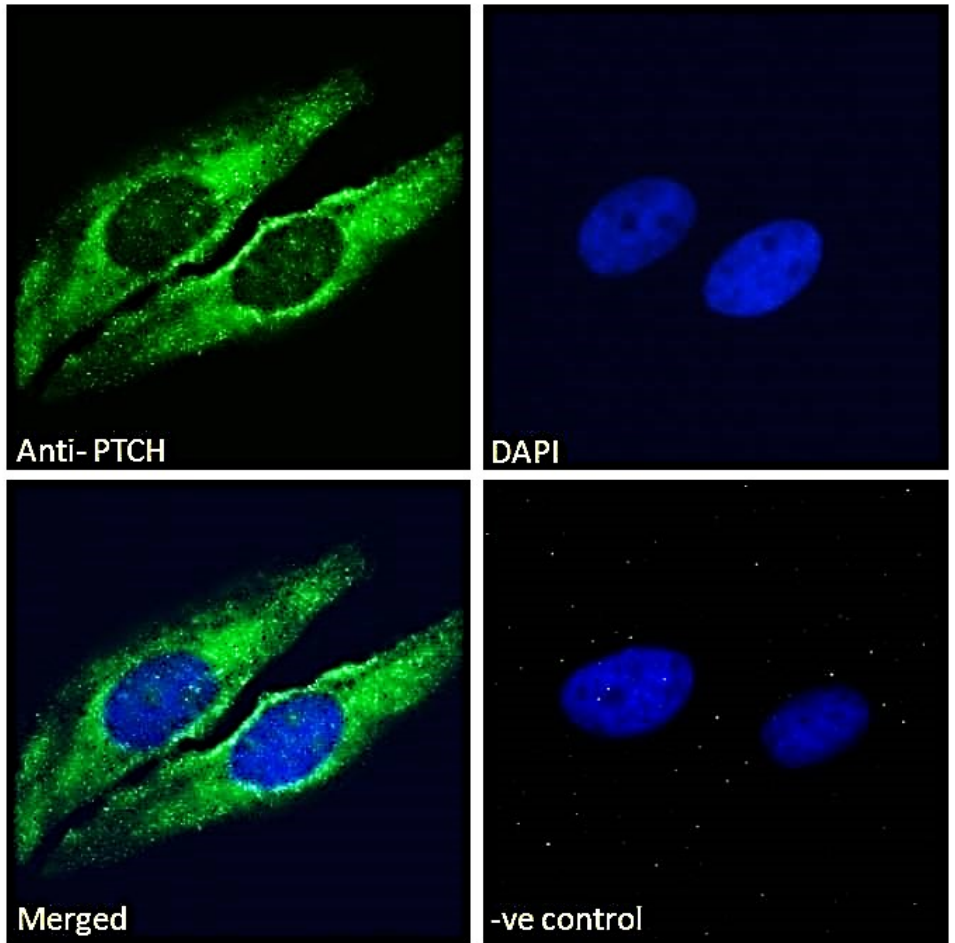
**This antibody (previous batch) has been successfully used in IHC and IF on Human:**

Abiria SA, Williams TV, Munden AL, Grover VK, Wallace A, Lundberg CJ, Valadez JG, Cooper MK.

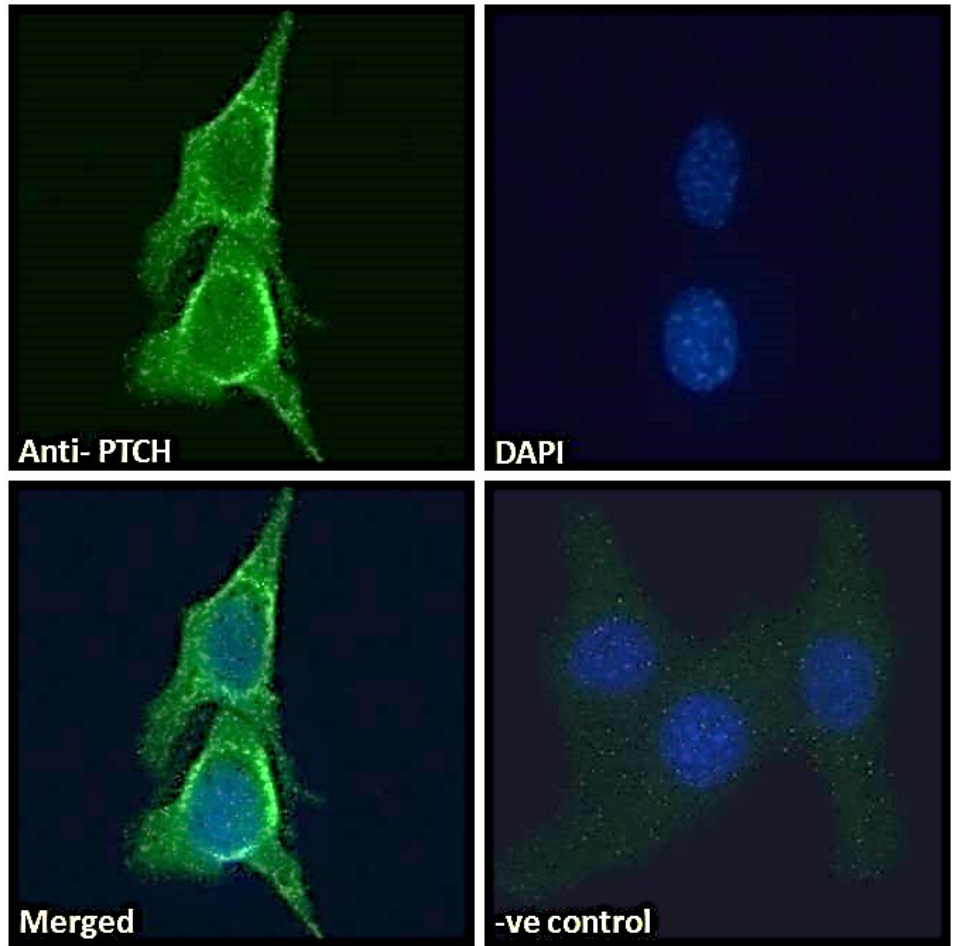
Expression of Hedgehog ligand and signal transduction components in mutually distinct isocitrate dehydrogenase mutant glioma cells supports a role for paracrine signaling.

J Neurooncol. 2014 May 28.

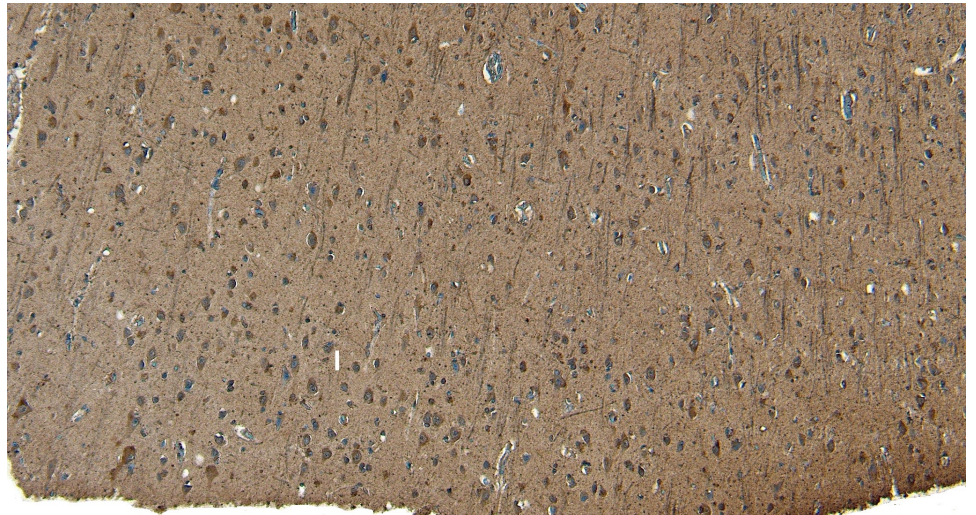
PMID: 24867209



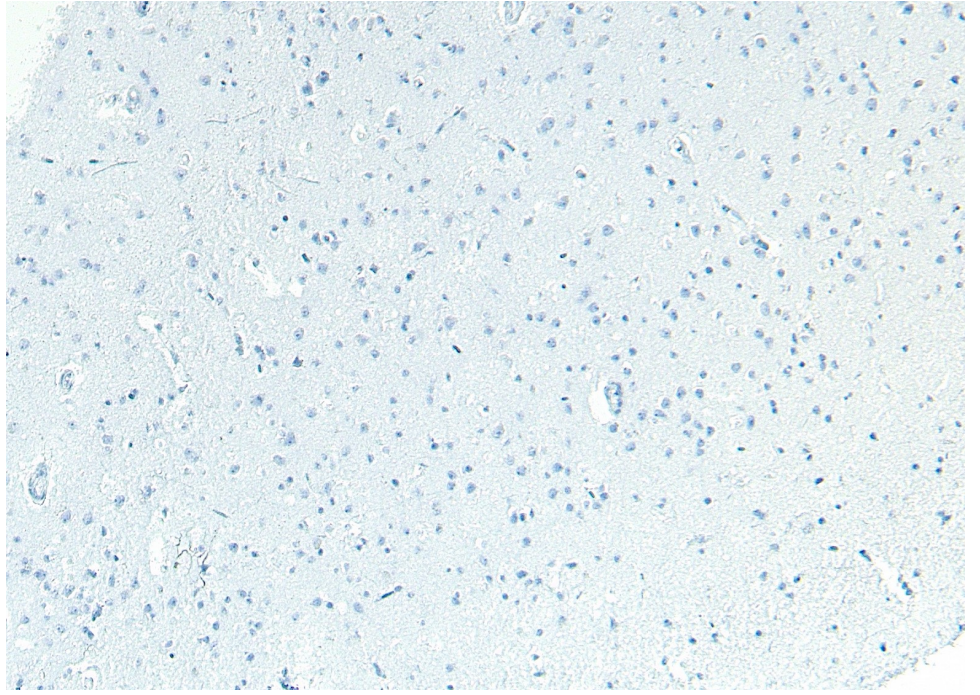
EB07025 Immunofluorescence analysis of paraformaldehyde fixed HeLa cells, permeabilized with 0.15% Triton. Primary incubation 1hr (10ug/ml) followed by Alexa Fluor 488 secondary antibody (2ug/ml), showing Golgi/cytoplasmic staining. The nuclear stain is DAPI (blue). Negative control: Unimmunized goat IgG (10ug/ml) followed by Alexa Fluor 488 secondary antibody (2ug/ml).



EB07025 Immunofluorescence analysis of paraformaldehyde fixed NIH3T3 cells, permeabilized with 0.15% Triton. Primary incubation 1 hr (10ug/ml) followed by Alexa Fluor 488 secondary antibody (2ug/ml), showing Golgi staining. The nuclear stain is DAPI (blue). Negative control: Unimmunized goat IgG (10ug/ml) followed by Alexa Fluor 488 secondary antibody (2ug/ml).



EB07025 (8µg/ml) staining of paraffin embedded Human Cortex. Heat induced antigen retrieval with citrate buffer pH 6, HRP-staining.



EB07025 Negative Control showing staining of paraffin embedded Human Cortex, with no primary antibody.