



SZABO SCANDIC

Part of Europa Biosite

Produktinformation



Forschungsprodukte & Biochemikalien



Zellkultur & Verbrauchsmaterial



Diagnostik & molekulare Diagnostik



Laborgeräte & Service

Weitere Information auf den folgenden Seiten!
See the following pages for more information!



Lieferung & Zahlungsart

siehe unsere [Liefer- und Versandbedingungen](#)

Zuschläge

- Mindermengenzuschlag
- Trockeneiszuschlag
- Gefahrgutzuschlag
- Expressversand

SZABO-SCANDIC HandelsgmbH

Quellenstraße 110, A-1100 Wien

T. +43(0)1 489 3961-0

F. +43(0)1 489 3961-7

mail@szabo-scandic.com

www.szabo-scandic.com

[linkedin.com/company/szaboscandic](https://www.linkedin.com/company/szaboscandic) 



UK Office

Everest Biotech Ltd

Cherwell Innovation Centre
77 Heyford Park
Upper Heyford
Oxfordshire
OX25 5HD
UK

Enquiries:

info@everestbiotech.com

Sales:

sales@everestbiotech.com

Tech support:

support@everestbiotech.com

Tel: +44 (0)1869 238326

Fax: +44 (0)1869 238327

US Office

Everest Biotech c/o Abcore

405 Maple Street, Suite A106
Ramona,
CA 92065
USA

Inquiries:

info@everestbiotech.com

Sales:

usasales@everestbiotech.com

Tech support:

support@everestbiotech.com

Tel: 888-320-4628 (toll-free)

Fax: 888-841-9041

www.everestbiotech.com

**Research Use Only. Not for
diagnostic or therapeutic use.**

EB07028 - Goat Anti-FZD8 / frizzled 8 Antibody

Size: 100µg specific antibody in 200µl



Target Protein

Principal Names: FZD8, frizzled homolog 8 (Drosophila), HGNC:4046, FZ-8, hFZ8, frizzled (Drosophila) homolog 8, frizzled 8

Official Symbol: FZD8

Accession Number(s): NP_114072.1

Human GeneID(s): [8325](#)

Non-Human GeneID(s): 14370 (mouse)

Immunogen

Peptide with sequence C-SYPKQMPLSQV, from the C Terminus of the protein sequence according to NP_114072.1.

Please note the [peptide](#) is available for sale.

Purification and Storage

Purified from goat serum by ammonium sulphate precipitation followed by antigen affinity chromatography using the immunizing peptide.

Supplied at 0.5 mg/ml in Tris saline, 0.02% sodium azide, pH7.3 with 0.5% bovine serum albumin.

Aliquot and store at -20°C. Minimize freezing and thawing.

Applications Tested

Peptide ELISA: antibody detection limit dilution 1:32000.

Western blot: Approx 75kDa band observed in Human Pancreas lysates (calculated MW of 73.3kDa according to NP_114072.1). Recommended concentration: 1-3µg/ml. Primary incubation was 1 hour. This antibody has been successfully used in WB on Mouse: Zhao B et al. (2019) PMID: 21321602.

IHC: Paraffin embedded Human Pancreas. Recommended concentration: 3µg/ml.

Immunofluorescence: This antibody has been successfully used in IF on Mouse: Zhao B et al. (2019) PMID: 21321602.

Additional validation: This antibody was successfully used in Electron microscopy (immunogold staining): Zhao B et al. (2019) PMID: 21321602.

Species Reactivity

Tested: Human

Expected from sequence similarity: Human, Mouse, Rat, Dog, Cow

Specific Reference

This antibody has been successfully used in WB, IF & EM on Mouse:

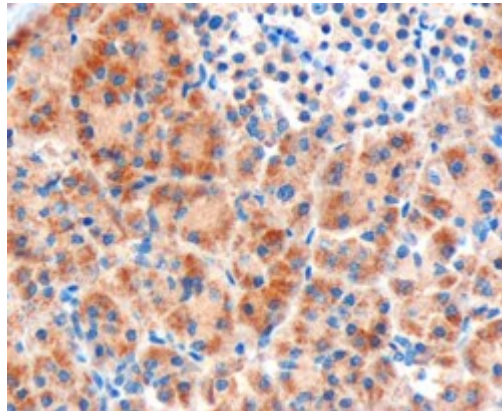
Zhao B, Wang HB, Lu YJ, Hu JW, Bao L, Zhang X.

Transport of receptors, receptor signaling complexes and ion channels via neuropeptide-secretory vesicles. *Cell Res.* 2011 May;21(5):741-53.

PMID: 21321602



EB07028 (1 μ g/ml) staining of Human Pancreas lysate (35 μ g protein in RIPA buffer). Detected by chemiluminescence.



EB07028 (3 μ g/ml) staining of paraffin embedded Human Pancreas. Microwaved antigen retrieval with Tris/EDTA buffer pH9, HRP-