



SZABO SCANDIC

Part of Europa Biosite

Produktinformation



Forschungsprodukte & Biochemikalien



Zellkultur & Verbrauchsmaterial



Diagnostik & molekulare Diagnostik



Laborgeräte & Service

Weitere Information auf den folgenden Seiten!
See the following pages for more information!



Lieferung & Zahlungsart

siehe unsere [Liefer- und Versandbedingungen](#)

Zuschläge

- Mindermengenzuschlag
- Trockeneiszuschlag
- Gefahrgutzuschlag
- Expressversand

SZABO-SCANDIC HandelsgmbH

Quellenstraße 110, A-1100 Wien

T. +43(0)1 489 3961-0

F. +43(0)1 489 3961-7

mail@szabo-scandic.com

www.szabo-scandic.com

[linkedin.com/company/szaboscandic](https://www.linkedin.com/company/szaboscandic) 



UK Office

Everest Biotech Ltd

Cherwell Innovation Centre
77 Heyford Park
Upper Heyford
Oxfordshire
OX25 5HD
UK

Enquiries:

info@everestbiotech.com

Sales:

sales@everestbiotech.com

Tech support:

support@everestbiotech.com

Tel: +44 (0)1869 238326

Fax: +44 (0)1869 238327

US Office

Everest Biotech c/o Abcore

405 Maple Street, Suite A106
Ramona,
CA 92065
USA

Inquiries:

info@everestbiotech.com

Sales:

usasales@everestbiotech.com

Tech support:

support@everestbiotech.com

Tel: 888-320-4628 (toll-free)

Fax: 888-841-9041

www.everestbiotech.com

**Research Use Only. Not for
diagnostic or therapeutic use.**

EB07057 - Goat Anti-ROBO3 (internal) Antibody

Size: 100µg specific antibody in 200µl



Target Protein

Principal Names: ROBO3, roundabout, axon guidance receptor, homolog 3 (Drosophila), HGNC:13433, FLJ21044, HGPPS, RBIG1, RIG1, retinoblastoma inhibiting gene 1, roundabout, axon guidance receptor, homolog 3

Official Symbol: ROBO3

Accession Number(s): NP_071765.2

Human GeneID(s): [64221](#)

Immunogen

Peptide with sequence C-RKDGARLKKEEEGR, from the internal region of the protein sequence according to NP_071765.2.

Please note the [peptide](#) is available for sale.

Purification and Storage

Purified from goat serum by ammonium sulphate precipitation followed by antigen affinity chromatography using the immunizing peptide.

Supplied at 0.5 mg/ml in Tris saline, 0.02% sodium azide, pH7.3 with 0.5% bovine serum albumin.

Aliquot and store at -20°C. Minimize freezing and thawing.

Applications Tested

Peptide ELISA: antibody detection limit dilution 1:64000.

Flow Cytometry: Flow cytometric analysis of U2OS cells. Recommended concentration: 10ug/ml. This antibody was successfully used on rheumatoid arthritis synovial fibroblasts (RASf): Denk et al (2010) PMID: 20298552.

Species Reactivity

Tested: Human

Expected from sequence similarity: Human, Dog

Specific Reference

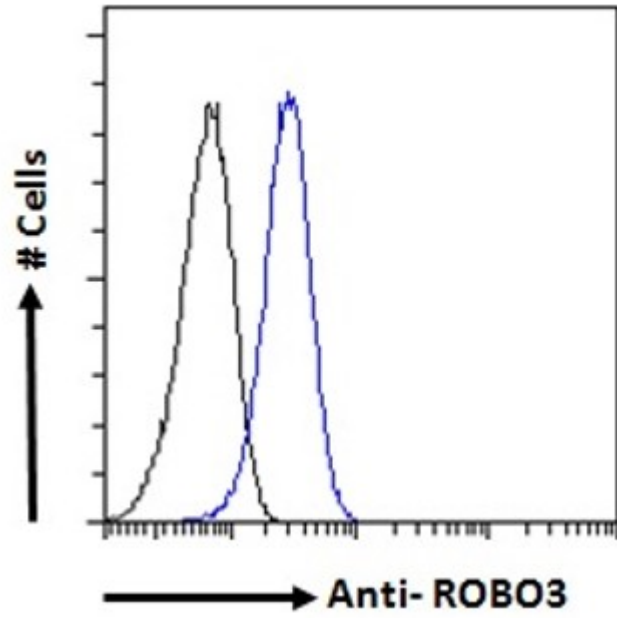
This antibody has been successfully used in FC on Human:

Denk AE, Kaufmann S, Stark K, Schedel J, Lowin T, Schubert T, Bosserhoff AK.

Slit3 inhibits Robo3-induced invasion of synovial fibroblasts in rheumatoid arthritis.

Arthritis Res Ther. 2010;12(2):R45.

PMID: 20298552



EB07057 Flow cytometric analysis of paraformaldehyde fixed U2OS cells (blue line), permeabilized with 0.5% Triton. Primary incubation 1hr (10ug/ml) followed by Alexa Fluor 488 secondary antibody (1ug/ml). IgG control: Unimmunized goat IgG (black line) followed by Alexa Fluor 488 secondary antibody.