



SZABO SCANDIC

Part of Europa Biosite

Produktinformation



Forschungsprodukte & Biochemikalien



Zellkultur & Verbrauchsmaterial



Diagnostik & molekulare Diagnostik



Laborgeräte & Service

Weitere Information auf den folgenden Seiten!
See the following pages for more information!



Lieferung & Zahlungsart

siehe unsere [Liefer- und Versandbedingungen](#)

Zuschläge

- Mindermengenzuschlag
- Trockeneiszuschlag
- Gefahrgutzuschlag
- Expressversand

SZABO-SCANDIC HandelsgmbH

Quellenstraße 110, A-1100 Wien

T. +43(0)1 489 3961-0

F. +43(0)1 489 3961-7

mail@szabo-scandic.com

www.szabo-scandic.com

[linkedin.com/company/szaboscandic](https://www.linkedin.com/company/szaboscandic) 



UK Office

Everest Biotech Ltd

Cherwell Innovation Centre
77 Heyford Park
Upper Heyford
Oxfordshire
OX25 5HD
UK

Enquiries:

info@everestbiotech.com

Sales:

sales@everestbiotech.com

Tech support:

support@everestbiotech.com

Tel: +44 (0)1869 238326

Fax: +44 (0)1869 238327

US Office

Everest Biotech c/o Abcore

405 Maple Street, Suite A106
Ramona,
CA 92065
USA

Inquiries:

info@everestbiotech.com

Sales:

usasales@everestbiotech.com

Tech support:

support@everestbiotech.com

Tel: 888-320-4628 (toll-free)

Fax: 888-841-9041

www.everestbiotech.com

**Research Use Only. Not for
diagnostic or therapeutic use.**

EB07059 - Goat Anti-DCDC2 Antibody

Size: 100µg specific antibody in 200µl



Target Protein

Principal Names: DCDC2, doublecortin domain containing 2, HGNC:18141, KIAA1154, RU2, RU2S, DCDC2A

Official Symbol: DCDC2

Accession Number(s): NP_057440.2

Human GeneID(s): [51473](#)

Immunogen

Peptide with sequence C-DGEEKANKDAEQKED, from the internal region of the protein sequence according to NP_057440.2.

Please note the [peptide](#) is available for sale.

Purification and Storage

Purified from goat serum by ammonium sulphate precipitation followed by antigen affinity chromatography using the immunizing peptide.

Supplied at 0.5 mg/ml in Tris saline, 0.02% sodium azide, pH7.3 with 0.5% bovine serum albumin.

Aliquot and store at -20°C. Minimize freezing and thawing.

Applications Tested

Peptide ELISA: antibody detection limit dilution 1:4000.

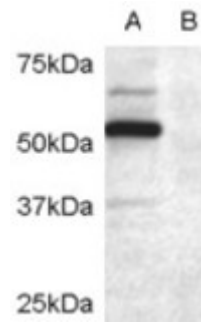
Western blot: Full length recombinant human DCDC2 expressed in COS7 (Lane A), non-transfectant COS7 (lane B). Approx 52kDa band observed (calculated MW of 52.8kDa according to NP_057440.1). Data kindly provided by Wang and LoTurco, University of Connecticut, USA. Recommended concentration 0.1-0.3µg/ml. An anonymous customer found positive results in WB on Mouse brain tissue.

IHC: In paraffin embedded Human Cerebral Cortex shows cytoplasm staining in select neurons. Recommended concentration, 5-10µg/ml. An anonymous customer found positive results in IHC on Rat retinal tissue. An anonymous customer found positive results in IHC on Rat dorsal root ganglion.

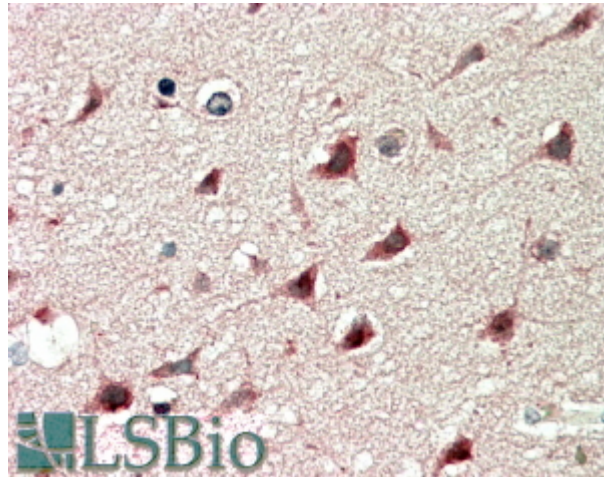
Species Reactivity

Tested: Human, Mouse, Rat

Expected from sequence similarity: Human, Dog, Pig



EB07059 (0.2 μ g/ml) staining of COS7 cell lysate transfected with full length recombinant human DCDC2 (A) and untransfected control COS7 cells (B). Primary incubation was 1 hour. Detected by chemiluminescence.



EB07059 (5 μ g/ml) staining of paraffin embedded Human Cerebral Cortex. Steamed antigen retrieval with citrate buffer pH 6, AP-staining.