



SZABO SCANDIC

Part of Europa Biosite

Produktinformation



Forschungsprodukte & Biochemikalien



Zellkultur & Verbrauchsmaterial



Diagnostik & molekulare Diagnostik



Laborgeräte & Service

Weitere Information auf den folgenden Seiten!
See the following pages for more information!



Lieferung & Zahlungsart

siehe unsere [Liefer- und Versandbedingungen](#)

Zuschläge

- Mindermengenzuschlag
- Trockeneiszuschlag
- Gefahrgutzuschlag
- Expressversand

SZABO-SCANDIC HandelsgmbH

Quellenstraße 110, A-1100 Wien

T. +43(0)1 489 3961-0

F. +43(0)1 489 3961-7

mail@szabo-scandic.com

www.szabo-scandic.com

[linkedin.com/company/szaboscandic](https://www.linkedin.com/company/szaboscandic) 



UK Office

Everest Biotech Ltd
Cherwell Innovation Centre
77 Heyford Park
Upper Heyford
Oxfordshire
OX25 5HD
UK

Enquiries:

info@everestbiotech.com

Sales:

sales@everestbiotech.com

Tech support:

support@everestbiotech.com

Tel: +44 (0)1869 238326

Fax: +44 (0)1869 238327

US Office

Everest Biotech c/o Abcore
405 Maple Street, Suite A106
Ramona,
CA 92065
USA

Inquiries:

info@everestbiotech.com

Sales:

usasales@everestbiotech.com

Tech support:

support@everestbiotech.com

Tel: 888-320-4628 (toll-free)

Fax: 888-841-9041

www.everestbiotech.com

**Research Use Only. Not for
diagnostic or therapeutic use.**

EB07061 - Goat Anti-14-3-3 sigma / Stratifin Antibody

Size: 100µg specific antibody in 200µl



Target Protein

Principal Names: 14-3-3sigma, stratifin, HGNC:10773, SFN, YWHAS

Official Symbol: SFN

Accession Number(s): NP_006133.1

Human GeneID(s): [2810](#)

Non-Human GeneID(s): 55948 (mouse), 313017 (rat)

Immunogen

Peptide with sequence C-DLHTLSEDSYKDST, from the internal region of the protein sequence according to NP_006133.1.

Please note the [peptide](#) is available for sale.

Purification and Storage

Purified from goat serum by ammonium sulphate precipitation followed by antigen affinity chromatography using the immunizing peptide.

Supplied at 0.5 mg/ml in Tris saline, 0.02% sodium azide, pH7.3 with 0.5% bovine serum albumin.

Aliquot and store at -20°C. Minimize freezing and thawing.

Applications Tested

Peptide ELISA: antibody detection limit dilution 1:16000.

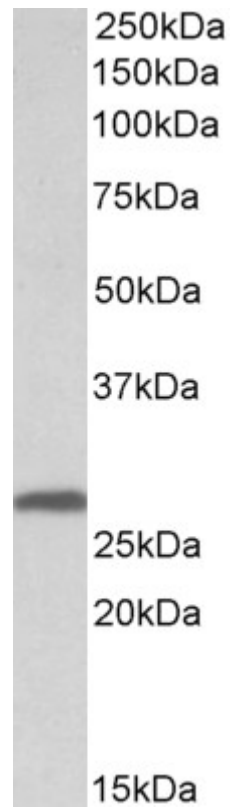
Western blot: Approx 26-28kDa band observed in Human, Mouse and Rat Skin lysates and in lysates of cell lines A431 and U2OS (calculated MW of 27.8kDa according to Human NP_006133.1, Mouse NP_061224.2 and Rat XP_003750096.1). Recommended concentration: 0.03-0.1µg/ml. Primary incubation 1 hour at room temperature.

IHC: In paraffin embedded Human Skin shows strong nuclear staining in selected cells of the basal layer. Recommended concentration, 2-4µg/ml.

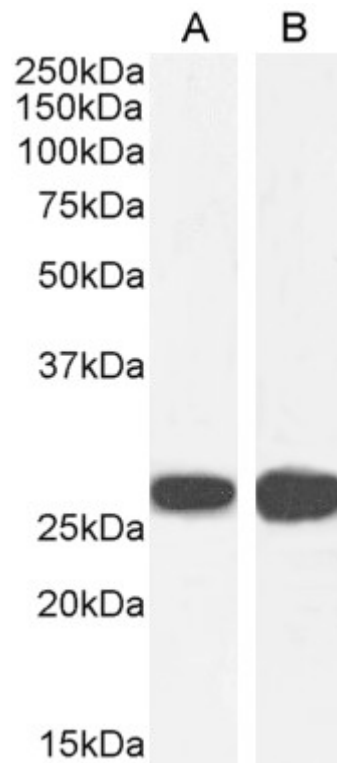
Species Reactivity

Tested: Human, Mouse, Rat

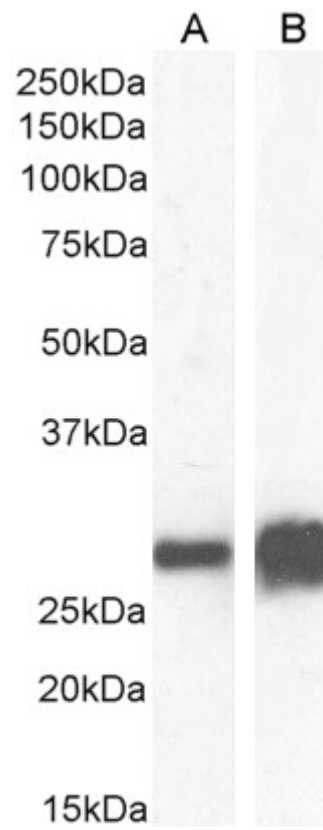
Expected from sequence similarity: Human, Mouse, Rat, Dog, Pig



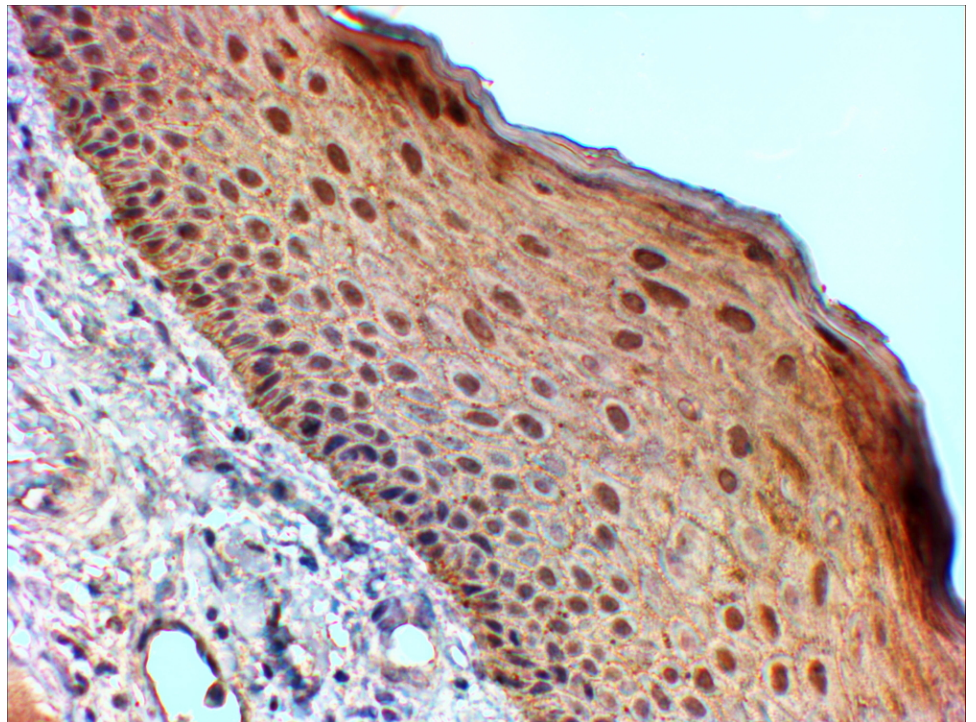
EB07061 (0.03µg/ml) staining of Human Skin lysate (35µg protein in RIPA buffer). Primary incubation was 1 hour. Detected by chemiluminescence.



EB07061 (0.03µg/ml) staining of A431 (A) and U2OS (B) cell lysate (35µg protein in RIPA buffer). Detected by chemiluminescence.



EB07061 (0.03 μ g/ml) staining of Mouse (A) and Rat (B) Skin lysate (35 μ g protein in RIPA buffer). Detected by chemiluminescence.



EB07061 (2 μ g/ml) staining of paraffin embedded Human Skin. Steamed antigen retrieval with Tris/EDTA buffer pH 9, HRP-staining.