



# SZABO SCANDIC

Part of Europa Biosite

## Produktinformation



Forschungsprodukte & Biochemikalien



Zellkultur & Verbrauchsmaterial



Diagnostik & molekulare Diagnostik



Laborgeräte & Service

Weitere Information auf den folgenden Seiten!  
See the following pages for more information!



### Lieferung & Zahlungsart

siehe unsere [Liefer- und Versandbedingungen](#)

### Zuschläge

- Mindermengenzuschlag
- Trockeneiszuschlag
- Gefahrgutzuschlag
- Expressversand

### SZABO-SCANDIC HandelsgmbH

Quellenstraße 110, A-1100 Wien

T. +43(0)1 489 3961-0

F. +43(0)1 489 3961-7

[mail@szabo-scandic.com](mailto:mail@szabo-scandic.com)

[www.szabo-scandic.com](http://www.szabo-scandic.com)

[linkedin.com/company/szaboscandic](https://www.linkedin.com/company/szaboscandic) 

## UK Office

### Everest Biotech Ltd

Cherwell Innovation Centre  
77 Heyford Park  
Upper Heyford  
Oxfordshire  
OX25 5HD  
UK

Enquiries:

[info@everestbiotech.com](mailto:info@everestbiotech.com)

Sales:

[sales@everestbiotech.com](mailto:sales@everestbiotech.com)

Tech support:

[support@everestbiotech.com](mailto:support@everestbiotech.com)

Tel: +44 (0)1869 238326

Fax: +44 (0)1869 238327

## US Office

### Everest Biotech c/o Abcore

405 Maple Street, Suite A106  
Ramona,  
CA 92065  
USA

Inquiries:

[info@everestbiotech.com](mailto:info@everestbiotech.com)

Sales:

[usasales@everestbiotech.com](mailto:usasales@everestbiotech.com)

Tech support:

[support@everestbiotech.com](mailto:support@everestbiotech.com)

Tel: 888-320-4628 (toll-free)

Fax: 888-841-9041

[www.everestbiotech.com](http://www.everestbiotech.com)

**Research Use Only. Not for  
diagnostic or therapeutic use.**

## EB07088 - Goat Anti-IFT88 / Polaris Antibody

Size: 100µg specific antibody in 200µl



### Target Protein

**Principal Names:** IFT88, polaris, TTC10, tetratricopeptide repeat domain 10, HGNC:20606, D13S1056E, DAF19, IFT88, MGC26259, RP11-172H24.2, TG737, hTg737, TPR repeat protein 10, Probe hTg737 (polycystic kidney disease, autosomal recessive), Tg737 protein, intraflagellar transport 88 homolog, recessive polycystic kidney disease protein Tg737 homolog, intraflagellar transport 88 homolog (Chlamydomonas)

**Official Symbol:** IFT88

**Accession Number(s):** NP\_783195.2; NP\_006522.2, NP\_001340507.1; NP\_001340498.1

**Human GeneID(s):** [8100](#)

**Non-Human GeneID(s):** 21821 (mouse), 305918 (rat)

**Important Comments:** This antibody is expected to recognise many reported isoforms.

### Immunogen

Peptide with sequence C-KKRIDEDDFADEE, from the C Terminus of the protein sequence according to NP\_783195.2; NP\_006522.2, NP\_001340507.1; NP\_001340498.1.

Please note the [peptide](#) is available for sale.

### Purification and Storage

Purified from goat serum by ammonium sulphate precipitation followed by antigen affinity chromatography using the immunizing peptide.

Supplied at 0.5 mg/ml in Tris saline, 0.02% sodium azide, pH7.3 with 0.5% bovine serum albumin.

Aliquot and store at -20°C. Minimize freezing and thawing.

### Applications Tested

**Peptide ELISA:** antibody detection limit dilution 1:128000.

**Western blot:** Approx 90kDa band observed in lysates of cell line A549 and in Mouse Testis lysates, and in preliminary testing of Rat Testes lysate (calculated MW of 90.4kDa according to Hunab NP\_001340498.1, and 93.1kDa according to Mouse NP\_033402.2 93.). Recommended concentration: 1-3ug/ml. Primary incubation 1 hour at room temperature.

**Immunofluorescence:** Strong expression of the protein seen in the nucleus and less staining in the cytoplasm of HepG2 cells. Recommended concentration: 10µg/ml.

**Flow Cytometry:** Flow cytometric analysis of HepG2 cells. Recommended concentration: 10ug/ml.

### Species Reactivity

**Tested:** Human, Mouse

**Expected from sequence similarity:** Human, Mouse, Rat, Dog

### Specific Reference

**This antibody (previous batch) has been successfully used in IF on Mouse:**

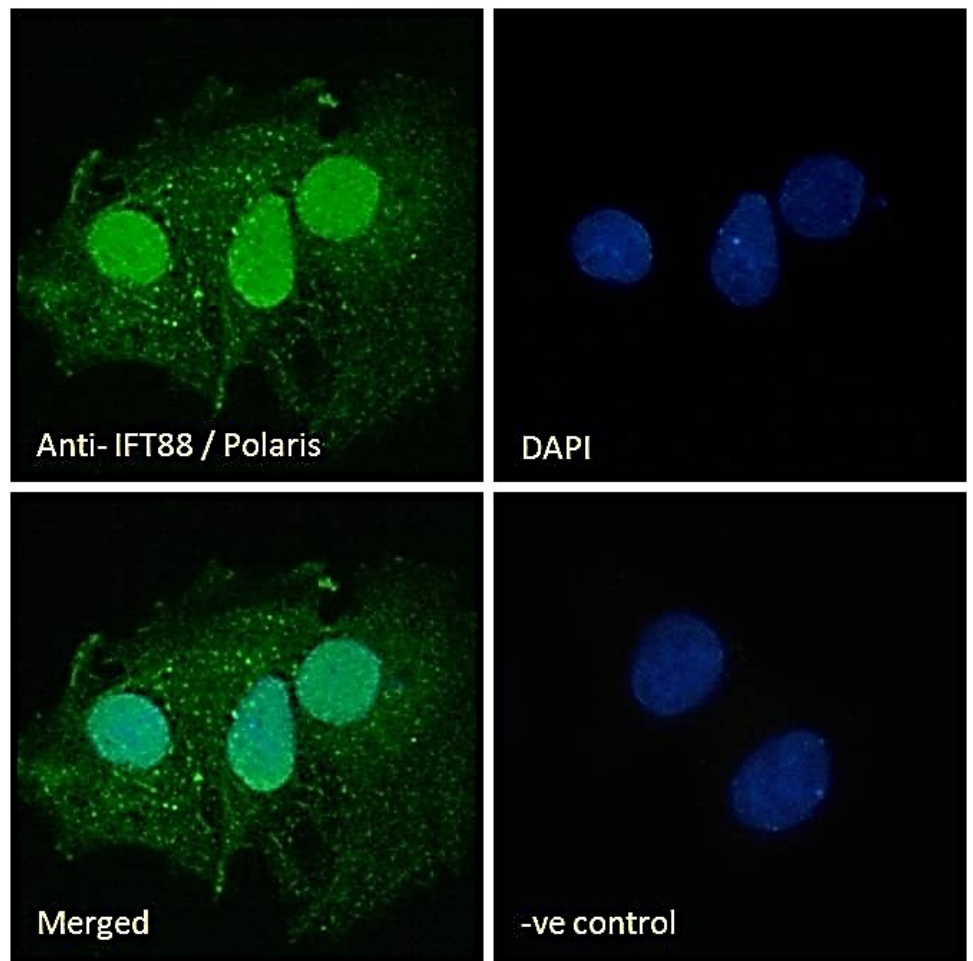
Miyoshi K, Kasahara K, Miyazaki I, Shimizu S, Taniguchi M, Matsuzaki S, Tohyama M, Asanuma M.

Pericentrin, a centrosomal protein related to microcephalic primordial dwarfism, is required for olfactory cilia assembly in mice.

FASEB J. 2009 Oct;23(10):3289-97.  
PMID: 19470799

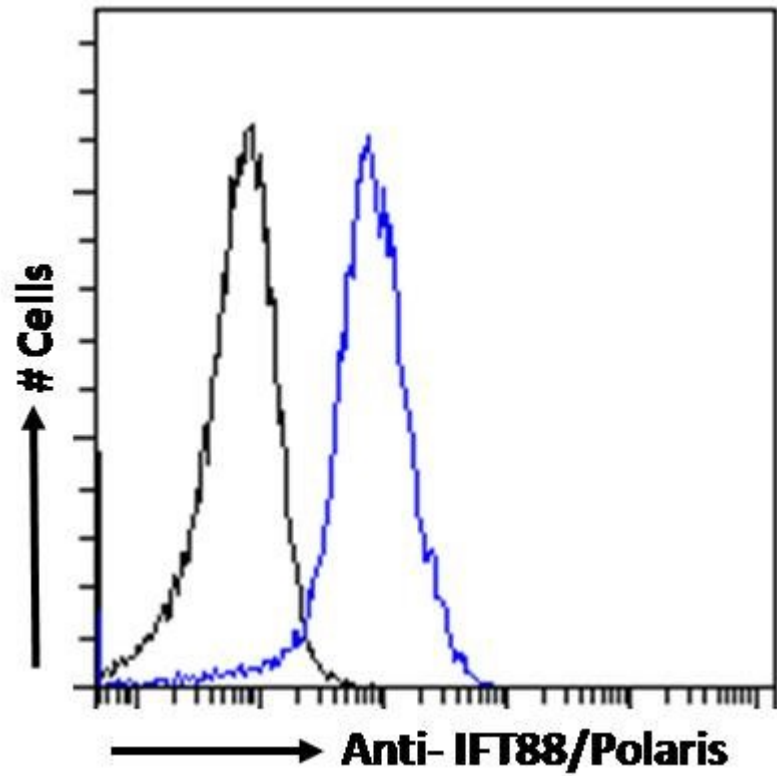


EB07088 (3ug/ml) staining of A549 (A) cell lysate and Mouse Testes (B) lysate (35µg protein in RIPA buffer). Detected by chemiluminescence.

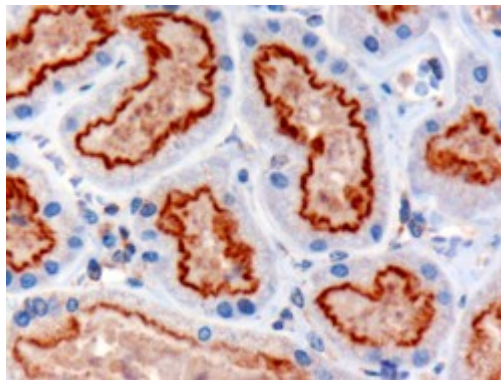


EB07088 Immunofluorescence analysis of paraformaldehyde fixed HepG2 cells, permeabilized with 0.15% Triton. Primary incubation 1hr (10ug/ml) followed by Alexa Fluor 488 secondary antibody (2ug/ml), showing nuclear and cytoplasmic staining. The nuclear stain is DAPI (blue). Negative control: Unimmunized goat IgG

(10ug/ml) followed by Alexa Fluor 488 secondary antibody (2ug/ml).



EB07088 Flow cytometric analysis of paraformaldehyde fixed HepG2 cells (blue line), permeabilized with 0.5% Triton. Primary incubation 1hr (10ug/ml) followed by Alexa Fluor 488 secondary antibody (1ug/ml). IgG control: Unimmunized goat IgG (black line) followed by Alexa Fluor 488 secondary antibody.



EB07088 (3µg/ml) staining of paraffin embedded Human Kidney. Microwaved antigen retrieval with Tris/EDTA buffer pH9, HRP-staining. **This data is from a previous batch, not on sale.**