



SZABO SCANDIC

Part of Europa Biosite

Produktinformation



Forschungsprodukte & Biochemikalien



Zellkultur & Verbrauchsmaterial



Diagnostik & molekulare Diagnostik



Laborgeräte & Service

Weitere Information auf den folgenden Seiten!
See the following pages for more information!



Lieferung & Zahlungsart

siehe unsere [Liefer- und Versandbedingungen](#)

Zuschläge

- Mindermengenzuschlag
- Trockeneiszuschlag
- Gefahrgutzuschlag
- Expressversand

SZABO-SCANDIC HandelsgmbH

Quellenstraße 110, A-1100 Wien

T. +43(0)1 489 3961-0

F. +43(0)1 489 3961-7

mail@szabo-scandic.com

www.szabo-scandic.com

[linkedin.com/company/szaboscandic](https://www.linkedin.com/company/szaboscandic) 



UK Office

Everest Biotech Ltd

Cherwell Innovation Centre
77 Heyford Park
Upper Heyford
Oxfordshire
OX25 5HD
UK

Enquiries:

info@everestbiotech.com

Sales:

sales@everestbiotech.com

Tech support:

support@everestbiotech.com

Tel: +44 (0)1869 238326

Fax: +44 (0)1869 238327

US Office

Everest Biotech c/o Abcore

405 Maple Street, Suite A106
Ramona,
CA 92065
USA

Inquiries:

info@everestbiotech.com

Sales:

usasales@everestbiotech.com

Tech support:

support@everestbiotech.com

Tel: 888-320-4628 (toll-free)

Fax: 888-841-9041

www.everestbiotech.com

**Research Use Only. Not for
diagnostic or therapeutic use.**

EB07117 - Goat Anti-Phosphodiesterase 4B Antibody

Size: 100µg specific antibody in 200µl



Target Protein

Principal Names: PDE4B, phosphodiesterase 4B, cAMP-specific (phosphodiesterase E4 dunce homolog, Drosophila), RP5-876C12.1, DKFZp686F2182, DPDE4, MGC126529, PDEIVB, OTTHUMP0000046896, cAMP-specific 3\1,5\1-cyclic phosphodiesterase 4B, dunce-like phosphodiesterase E4, phosphodiesterase 4B, cAMP-specific, phosphodiesterase 4B, cAMP-specific (dunce (Drosophila)-homolog phosphodiesterase E4)

Official Symbol: PDE4B

Accession Number(s): NP_002591.2; NP_001032418.1; NP_001032416.1; NP_001032417.1

Human GenelD(s): [5142](#)

Important Comments: This antibody is expected to recognise all reported isoforms (NP_002591.2, NP_001032418.1, NP_001032416.1 and NP_001032417.1).

Immunogen

Peptide with sequence C-DIDIATEDKSPVDT, from the C Terminus of the protein sequence according to NP_002591.2; NP_001032418.1; NP_001032416.1; NP_001032417.1.

Please note the [peptide](#) is available for sale.

Purification and Storage

Purified from goat serum by ammonium sulphate precipitation followed by antigen affinity chromatography using the immunizing peptide.

Supplied at 0.5 mg/ml in Tris saline, 0.02% sodium azide, pH7.3 with 0.5% bovine serum albumin.

Aliquot and store at -20°C. Minimize freezing and thawing.

Applications Tested

Peptide ELISA: antibody detection limit dilution 1:8000.

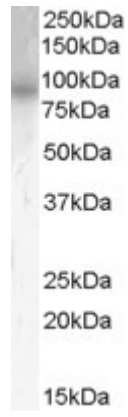
Western blot: Approx 85kDa band observed in Mouse Brain lysates (calculated MW of 83.3kDa according to Human NP_002591.2 and 82.1kDa according to Mouse NP_062814.2). In transfected HEK293 transiently expressing Human PDE4B a band of approx. 85kDa is observed. This band is not observed in the non-transfected HEK293. Recommended concentration: 0.5-1.0 µg/ml.

IHC: Paraffin embedded Human Prostate. Recommended concentration: 5µg/ml.

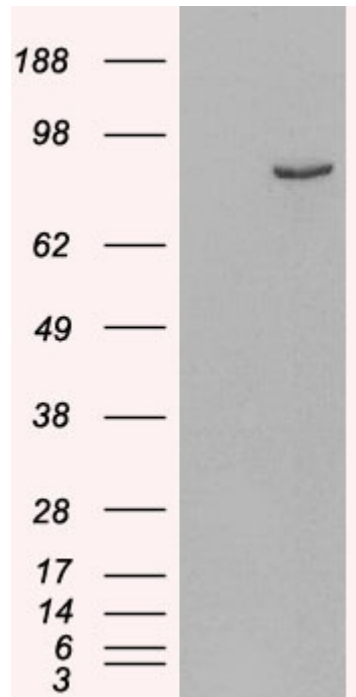
Species Reactivity

Tested: Mouse, Human

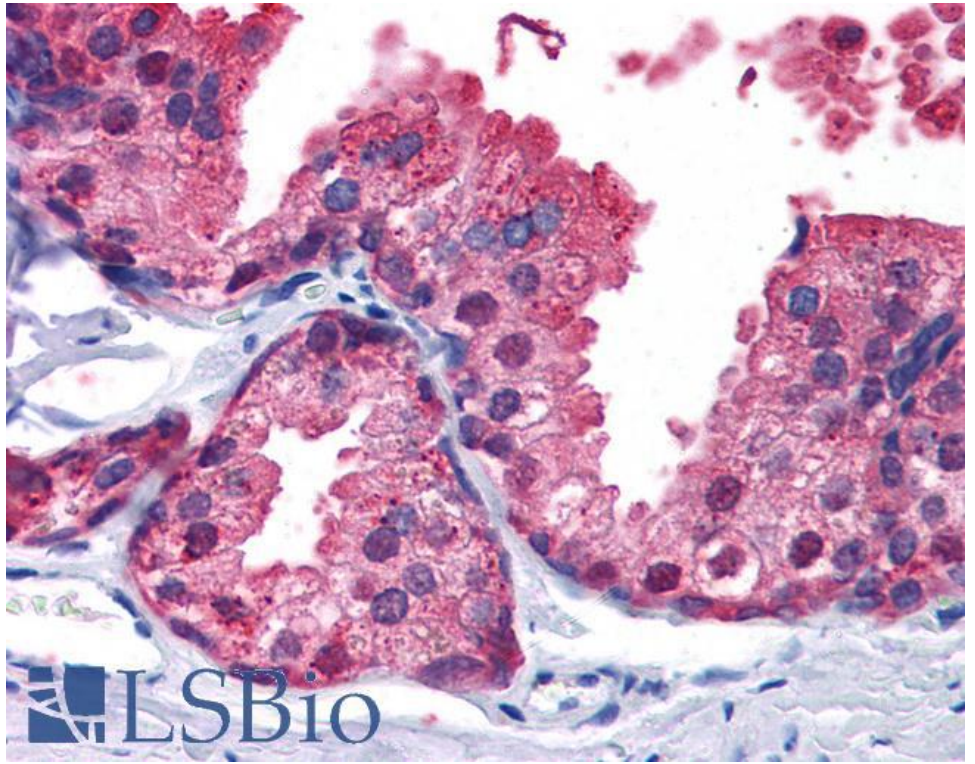
Expected from sequence similarity: Human, Mouse, Rat



EB07117 (0.5µg/ml) staining of Mouse Brain Lysate (35µg protein in RIPA buffer). Primary incubation was 1 hour. Detected by chemiluminescence.



HEK293 overexpressing Human PDE4B (RC211956) and probed with EB07117 (mock transfection in first lane), tested by Origene.



EB07117 (5µg/ml) staining of paraffin embedded Human Prostate. Steamed antigen retrieval with citrate buffer pH 6, AP-staining.