



# SZABO SCANDIC

Part of Europa Biosite

## Produktinformation



Forschungsprodukte & Biochemikalien



Zellkultur & Verbrauchsmaterial



Diagnostik & molekulare Diagnostik



Laborgeräte & Service

Weitere Information auf den folgenden Seiten!  
See the following pages for more information!



### Lieferung & Zahlungsart

siehe unsere [Liefer- und Versandbedingungen](#)

### Zuschläge

- Mindermengenzuschlag
- Trockeneiszuschlag
- Gefahrgutzuschlag
- Expressversand

### SZABO-SCANDIC HandelsgmbH

Quellenstraße 110, A-1100 Wien

T. +43(0)1 489 3961-0

F. +43(0)1 489 3961-7

[mail@szabo-scandic.com](mailto:mail@szabo-scandic.com)

[www.szabo-scandic.com](http://www.szabo-scandic.com)

[linkedin.com/company/szaboscandic](https://www.linkedin.com/company/szaboscandic) 



## UK Office

### Everest Biotech Ltd

Cherwell Innovation Centre  
77 Heyford Park  
Upper Heyford  
Oxfordshire  
OX25 5HD  
UK

Enquiries:

[info@everestbiotech.com](mailto:info@everestbiotech.com)

Sales:

[sales@everestbiotech.com](mailto:sales@everestbiotech.com)

Tech support:

[support@everestbiotech.com](mailto:support@everestbiotech.com)

Tel: +44 (0)1869 238326

Fax: +44 (0)1869 238327

## US Office

### Everest Biotech c/o Abcore

405 Maple Street, Suite A106  
Ramona,  
CA 92065  
USA

Inquiries:

[info@everestbiotech.com](mailto:info@everestbiotech.com)

Sales:

[usasales@everestbiotech.com](mailto:usasales@everestbiotech.com)

Tech support:

[support@everestbiotech.com](mailto:support@everestbiotech.com)

Tel: 888-320-4628 (toll-free)

Fax: 888-841-9041

[www.everestbiotech.com](http://www.everestbiotech.com)

**Research Use Only. Not for  
diagnostic or therapeutic use.**

## EB07133 - Goat Anti-ADRB1 Antibody

Size: 100µg specific antibody in 200µl



### Target Protein

**Principal Names:** ADRB1, adrenergic, beta-1-, receptor, ADRB1R, B1AR, BETA1AR, RHR, beta-1-adrenergic receptor

**Official Symbol:** ADRB1

**Accession Number(s):** NP\_000675.1

**Human GeneID(s):** [153](#)

### Immunogen

Peptide with sequence ESDEARRCYNDPK, from the internal region of the protein sequence according to NP\_000675.1.

Please note the [peptide](#) is available for sale.

### Purification and Storage

Purified from goat serum by ammonium sulphate precipitation followed by antigen affinity chromatography using the immunizing peptide.

Supplied at 0.5 mg/ml in Tris saline, 0.02% sodium azide, pH7.3 with 0.5% bovine serum albumin.

Aliquot and store at -20°C. Minimize freezing and thawing.

### Applications Tested

**Peptide ELISA:** antibody detection limit dilution 1:2000.

**Western blot:** This antibody is not recommended for use in Western blotting.

**IHC:** Paraffin embedded Human Heart. Recommended concentration: 6µg/ml.

**Immunofluorescence:** Strong expression of the protein seen in the plasma membrane and cytoplasm of HeLa cells. Recommended concentration: 10µg/ml.

### Species Reactivity

**Tested:** Human

**Expected from sequence similarity:** Human, Mouse, Rat, Dog

### Specific References

**This antibody has been successfully used in the following paper:**

Ting-Yu Lin, Quynh N Mai, Hao Zhang, Emily Wilson, Huan-Chieh Chien, Sook Wah Yee, Kathleen M Giacomini, Jeffrey E Olgin, Roshanak Irannejad

Cardiac contraction and relaxation are regulated by distinct subcellular cAMP pools.

Nat Chem Biol. 2023 Jul 20.

PMID: 37474759

**This antibody (previous batch) has been successfully used in Assay**

**Standardization of Rat Cardiomyocytes:**

Gerd Wallukat, Harald Pruss, Johannes Muller, Ingolf Schimke

Functional autoantibodies in patients with different forms of dementia

PLoS One. 2018 Mar 14;13(3):e0192778.

PMID: 29538413

**This antibody has been successfully used in the following paper:**

Wenzel K, Schulze-Rothe S, Müller J, Wallukat G, Haberland A.

Difference between beta1-adrenoceptor autoantibodies of human and animal origin-Limitations detecting beta1-adrenoceptor autoantibodies using peptide based ELISA technology.

PLoS One. 2018 Feb 9;13(2):e0192615

PMID: 29425252

**This antibody (previous batch) has been successfully used in the following paper:**

Wenzel K, Schulze-Rothe S, Haberland A, Müller J, Wallukat G, Davideit H  
Performance and in-house validation of a bioassay for the determination of beta1-auto  
antibodies found in patients with cardiomyopathy.

Heliyon. 2017 Jul 31;3(7): e00362.

PMID: 28795160

**This antibody (previous batch) has been successfully used for In Vitro Testing of  
Apheresis Column Functionality in Rat:**

Wallukat G, Haberland A, Berg S, Schulz A, Freyse EJ, Dahmen C, Kage A, Dandel M,  
Vetter R, Salzsieder E, Kreutz R, Schimke I.

The first aptamer-apheresis column specifically for clearing blood of  $\beta$ 1-receptor  
autoantibodies.

Circ J. 2012;76(10):2449-55.

PMID: 22850243

**This antibody (previous batch) has been successfully used in IP on DNA aptamers  
in vitro:**

Haberland A, Wallukat G, Dahmen C, Kage A, Schimke I.

Aptamer neutralization of beta1-adrenoceptor autoantibodies isolated from patients with  
cardiomyopathies.

Circ Res. 2011 Oct 14;109(9):986-92.

PMID: 21868696

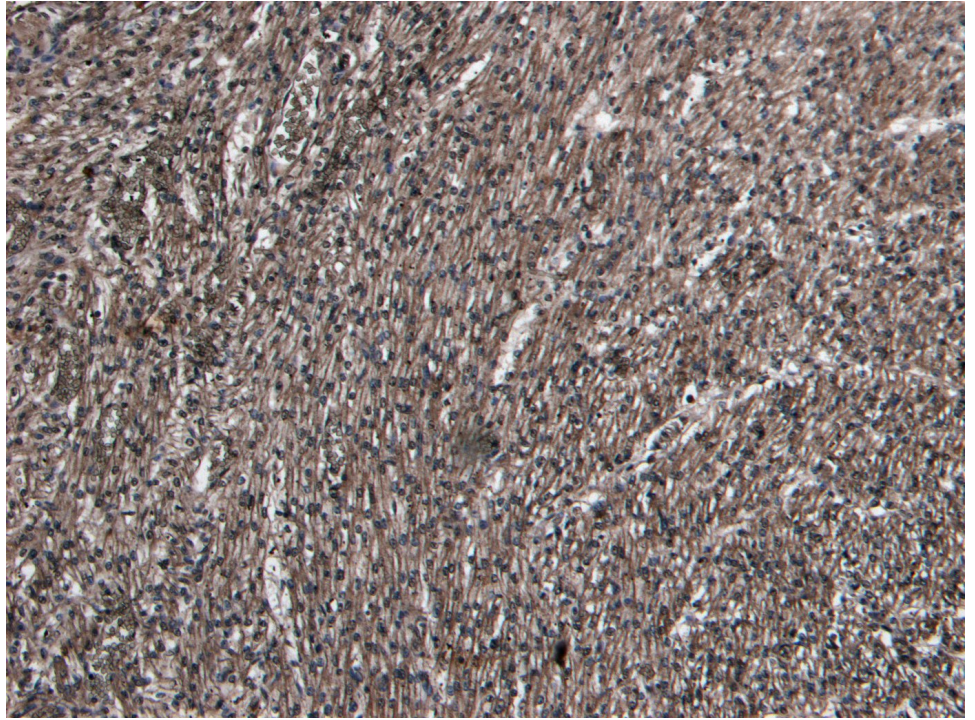
**This antibody (previous batch) has been successfully used in Assay  
Standardization (beating frequency) of Rat Cardiomyocytes:**

Wallukat G, Muñoz Saravia SG, Haberland A, Bartel S, Araujo R, Valda G, Duchon D,  
Diaz Ramirez I, Borges AC, Schimke I.

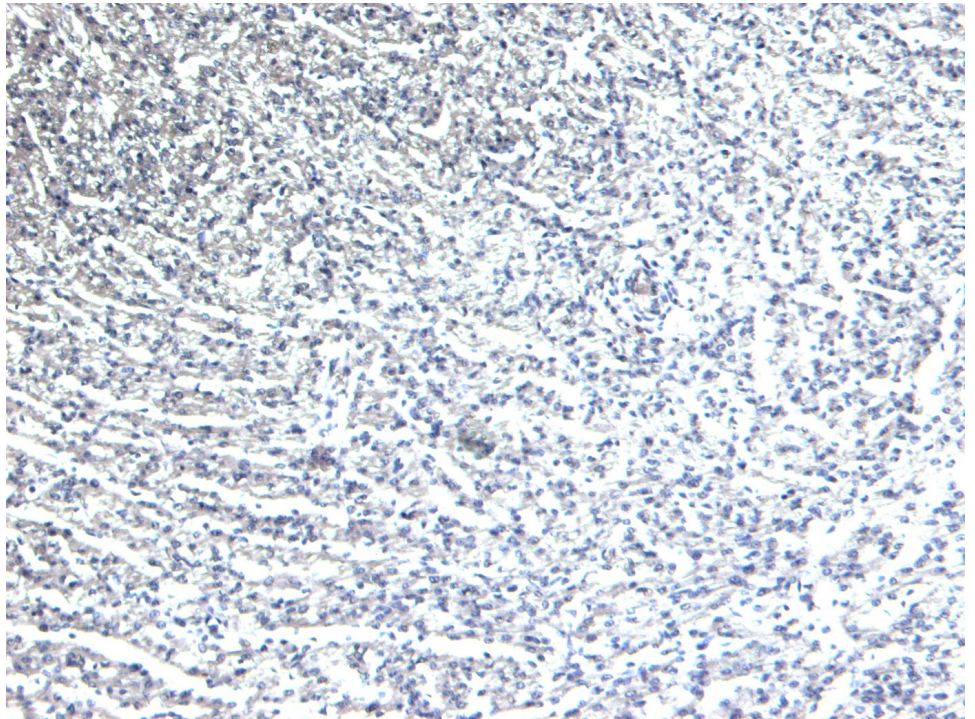
Distinct patterns of autoantibodies against G-protein-coupled receptors in Chagas'  
cardiomyopathy and megacolon. Their potential impact for early risk assessment in  
asymptomatic Chagas' patients.

J Am Coll Cardiol. 2010 Feb 2;55(5):463-8.

PMID: 20117461

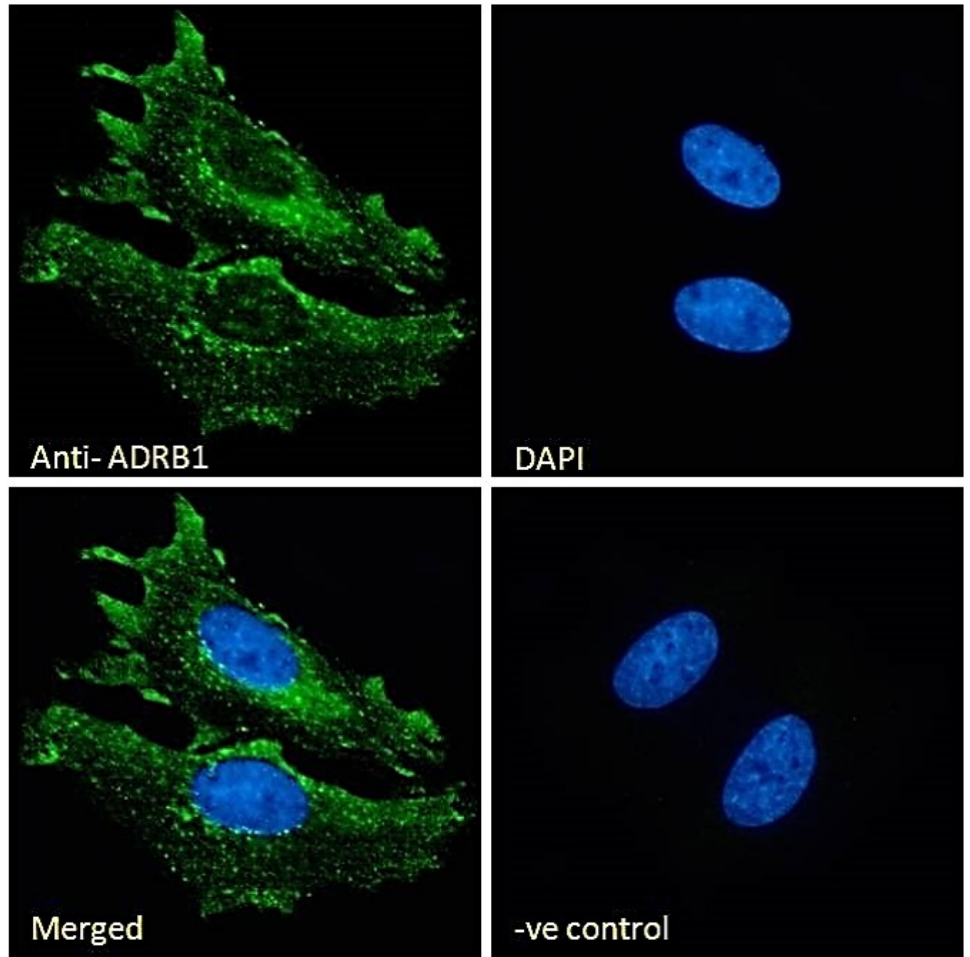


EB07133 (6 $\mu$ g/ml) staining of paraffin embedded Human Heart. Heat induced antigen retrieval with citrate buffer pH 6, HRP-staining.



EB07133 Negative Control showing staining of paraffin embedded Human Heart, with no primary antibody.





EB07133 Immunofluorescence analysis of paraformaldehyde fixed HeLa cells, permeabilized with 0.15% Triton. Primary incubation 1hr (10ug/ml) followed by Alexa Fluor 488 secondary antibody (2ug/ml), showing membrane and cytoplasmic staining. The nuclear stain is DAPI (blue). Negative control: Unimmunized goat IgG (10ug/ml) followed by Alexa Fluor 488 secondary antibody (2ug/ml).